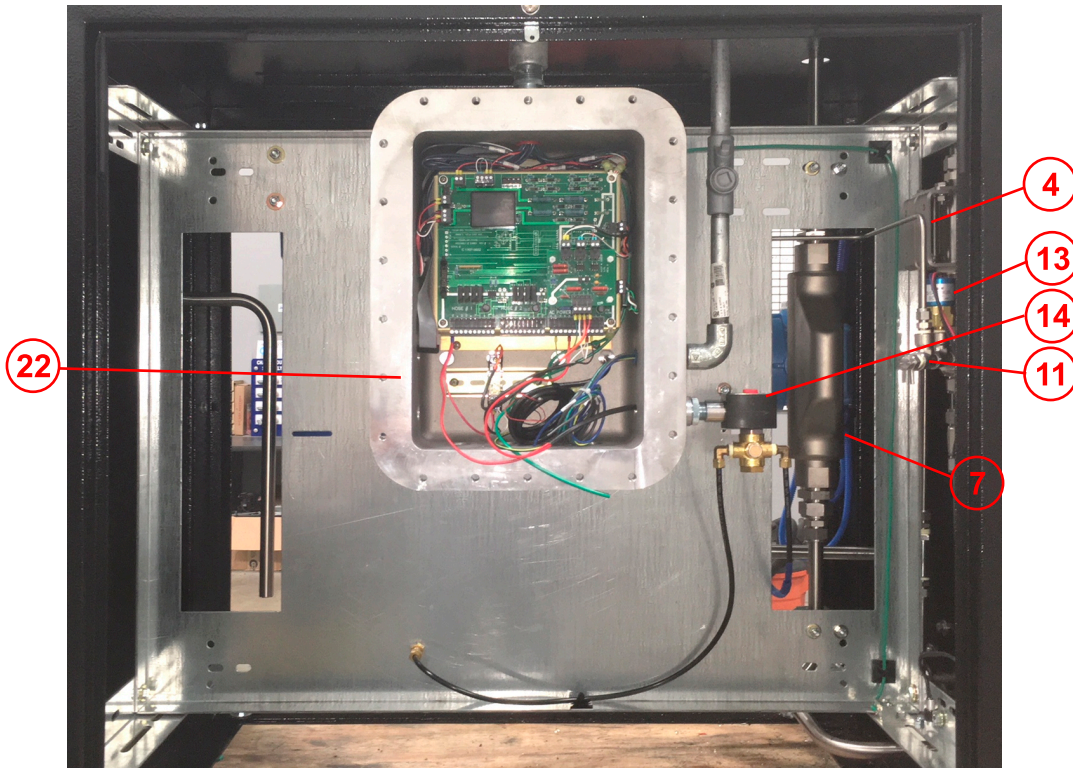
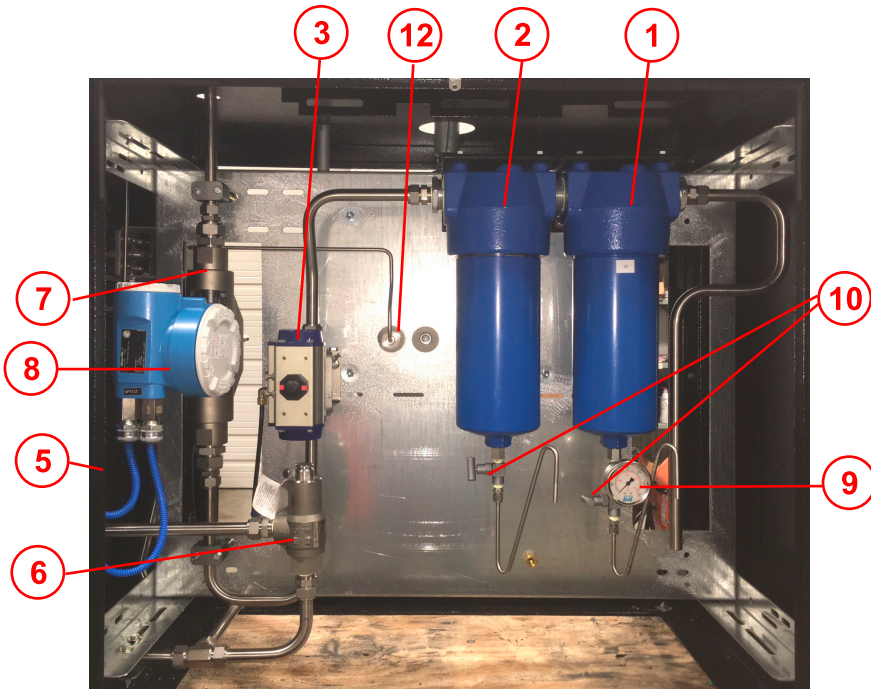


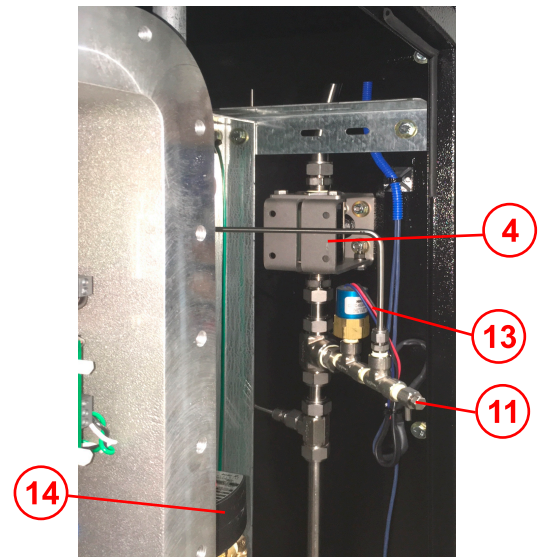
**T7104-12-8FF25 LOCATION DIAGRAM / MAINTENANCE BULLETIN**



**LOWER ENCLOSURE FRONT**

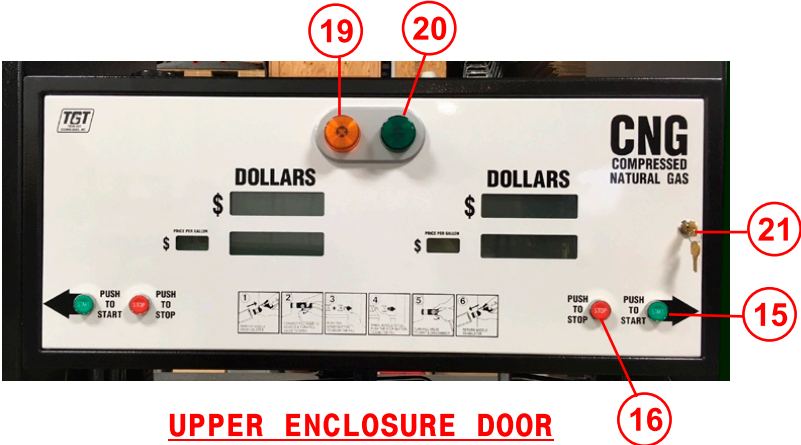


**LOWER ENCLOSURE BACK**

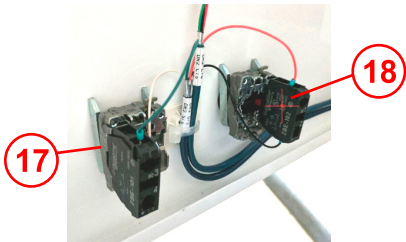


**LOWER ENCLOSURE FRONT RIGHT**

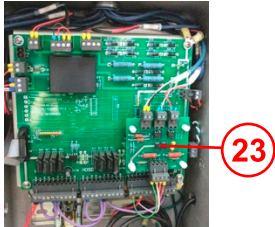
**T7104-12-8FF25 LOCATION DIAGRAM / MAINTENANCE BULLETIN**



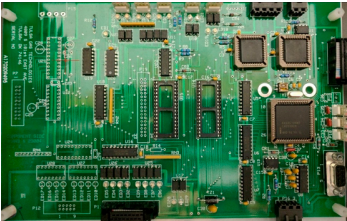
**UPPER ENCLOSURE DOOR**



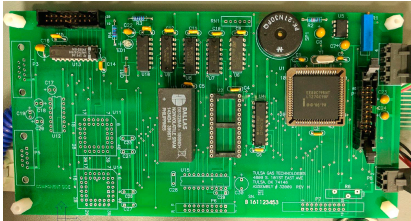
**UPPER ENCLOSURE DOOR INTERIOR**



**CUSTOMER I/O BOARD**



**MAIN BOARD**



**MMI**



**GREY BOX DISPLAY**



**HOSE RETRACTOR**

**T7104-12-8FF25 LOCATION DIAGRAM / MAINTENANCE BULLETIN**

**COMPONENTS**

<b>Item</b>	<b>Qty</b>	<b>Descrip</b>	<b>P</b>	<b>Manufacturer</b>
1	1	Pa	J	Parker
	1	Parker10	10CJDK	Parker
2	1	Parker J6 F	JN6P4-CN	Parker
	1	Parker 4 M	4CJDK	Parker
3	1	3/4" Actuator	PN63S	B
4	2	3/4" Oasis Caged Ball Valv	BV7064N6LDDN	Oasis
5	-	3/8" Check Valve	CV2034NTSN	Oasis
6	1	Mercer 4500lb	14-22B112JX	Mercer Valve
7	1	Flow Meter	8FF25	Endress+Hauser
8	1	Transm	DN25	Endress+Hauser
9	2	5000LB TGT Gauge	50230158	TGT
10	2	Needle valve	152-MFC	NoShok
11	1	Bleed Valve	4M-BV4-SS	Parker
12	1	Pressure Transducer6000lb.	PXT-K 6000	Murphy
13	1	Mechanical Pressure Switch	CD-1C-4500/WL293	Nason
14	1	Red hat Solenoid Valve	EF8320G18420/60110/50	Asco
15	1	Start Switch Electric XB4 Series	ZB4BA333	Schneider Elec.
16	1	Stop Switch Electric XB4 Series	ZB4B	Schneider Elec.
17	1	Start Switch Contact Block	ZB4B	Schneider Elec.
18	1	Stop Switch Contact Block	ZB4BZ102	Schneider Elec.
19	1	AmberStandby Light	I	TGT
20	1	Green Stand	IA-S-55G	TGT
21	4	Lock Set	C8052C642A14A	Comp X Inter.
22	1	Explosion Proof Box		TGT
	1	Customer I/O Boar	32003	TGT
	1	Relay	RH1BUDC24V	IDEC
	1	Relay Socket Bloc	SH1B05C	IDEC

Maintenance Bulletin

1. Visual hose inspection, recommended weekly
2. Drain filter(s) at least monthly. The volume at each location will vary and filters should be drained according to need.
3. Leak check dispenser yearly. Additional leak checks should be performed after any service or repair to the dispenser.
4. Filter element replacement should take place yearly, or according to need based upon volume at each location.