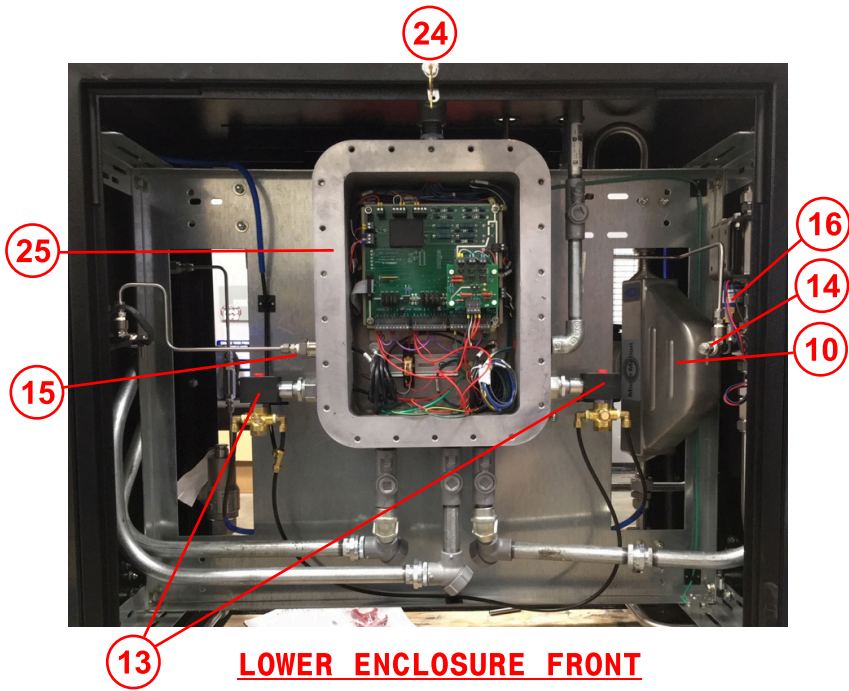
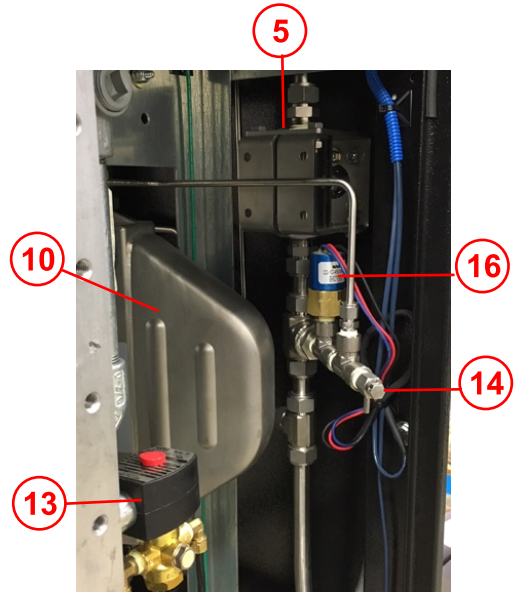


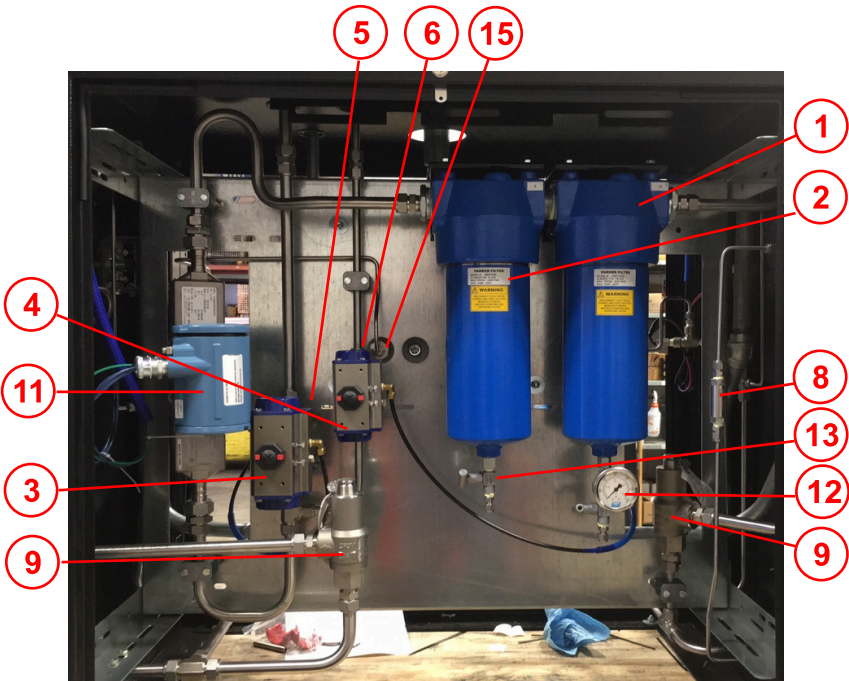
**T7214-12-8-CNG50 LOCATION DIAGRAM / MAINTENANCE BULLETIN**



**LOWER ENCLOSURE FRONT**

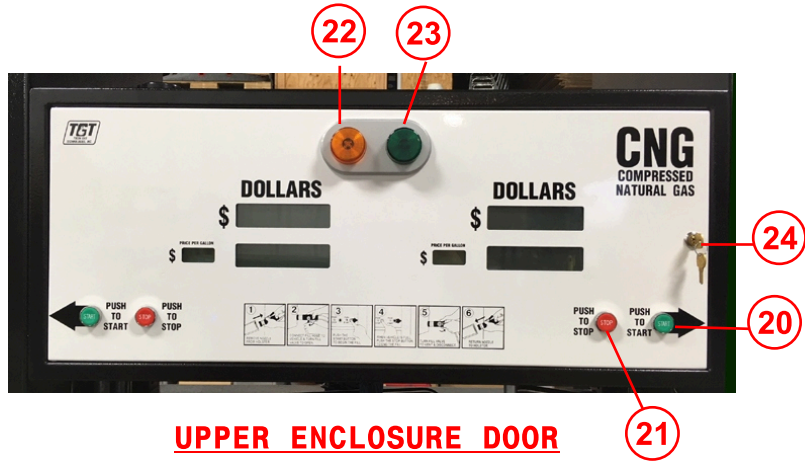


**LOWER ENCLOSURE FRONT RIGHT**

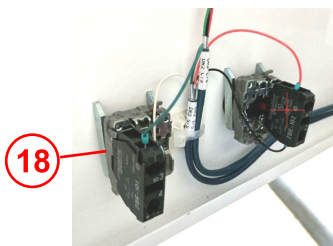


**LOWER ENCLOSURE BACK**

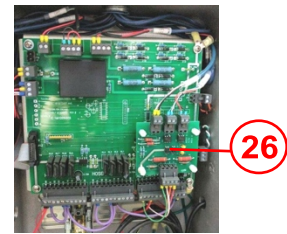
**T7214-12-8-CNG50 LOCATION DIAGRAM / MAINTENANCE BULLETIN**



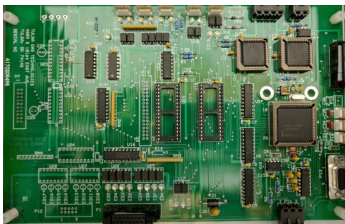
**UPPER ENCLOSURE DOOR**



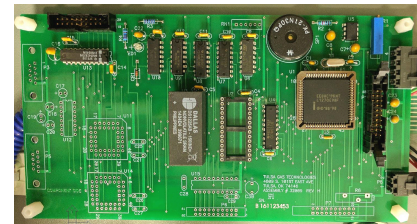
**UPPER ENCLOSURE DOOR INTERIOR**



**CUSTOMER I/O BOARD**



**MAIN BOARD**



**MMI**



**GREY BOX DISPLAY**



**HOSE RETRACTOR**

**T7214-12-8-CNG50 LOCATION DIAGRAM / MAINTENANCE BULLETIN**

**COMPONENTS**

<i>I</i>	<i>Q</i>	<i>D</i>	<i>P</i>	<i>M</i>
1	1	P	J	Pa
	1	Par	10	Park
2	1	Parke	JN	Parker
	1	Parker 4	4C	Parker
3	1	3/	PN6	B
4	1	1/2"	PN5	Bi
5	2	3/4" O	BV	Oas
6	1	1/2" Oasis Bal	BV7	Oasis
7	1	3/8	CV203	Oasis
8	1	1/4" Ch	CV1023-NBS	Oasis
9	2	M	14-	Merc
10	2	F	CNG	E
11	2	T	2700I	Em
12	3	5000L	50	TGT
13	2	Need	152-MFC	No
14	2	Bleed Valv	4M-BV4SS	Parker
15	2	Pressu	PX	Murp
16	2	Mechan	CD	Nason
17	2	R	EF8320G18420/60110/50	A
18	2	St	ZB	Schneider Elec.
19	2	Stop Switch Electric XB4 Series	ZB	SchneideElec.
20	2	Start Switch Contact Block	ZB	Schneider Elec.
21	2	Stop Switch Contact Block	ZB	Schneider Elec.
22	2	Amb	IA-S-55A	TGT
23	2	Green Stand	IA-S-55G	TGT
24	4		C8052C642A14A	Comp X Inter.
25	1	Ex		TGT
26	1	Standby	32013	TGT
	1	Customer I/O Board	32003	TGT
	1	Relay	RH	IDEC
	1	Relay Socket Block	SH1B05C	IDEC

Maintenance Bulletin

1. Visual hose inspection, recommended weekly
2. Drain filter(s) at least monthly. The volume at each location will vary and filters should be drained according to need.
3. Leak check dispenser yearly. Additional leak checks should be performed after any service or repair to the dispenser.
4. Filter element replacement should take place yearly, or according to need based upon volume at each location.