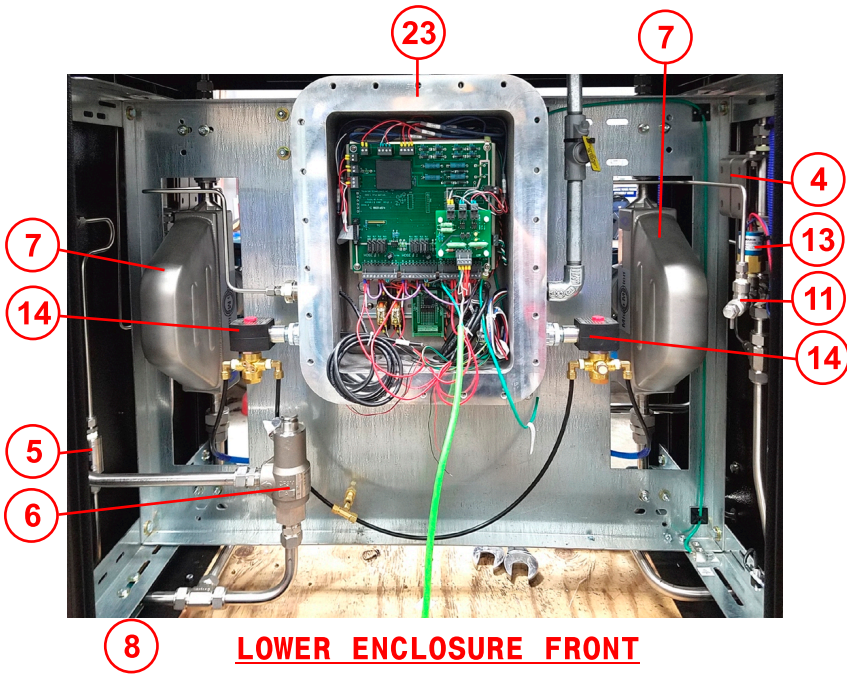
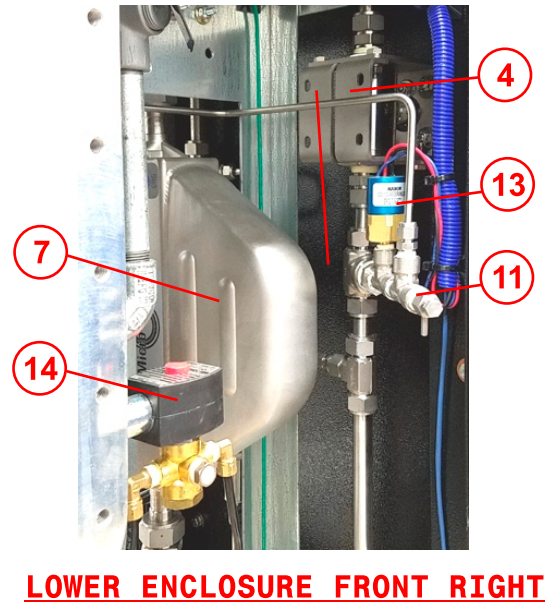


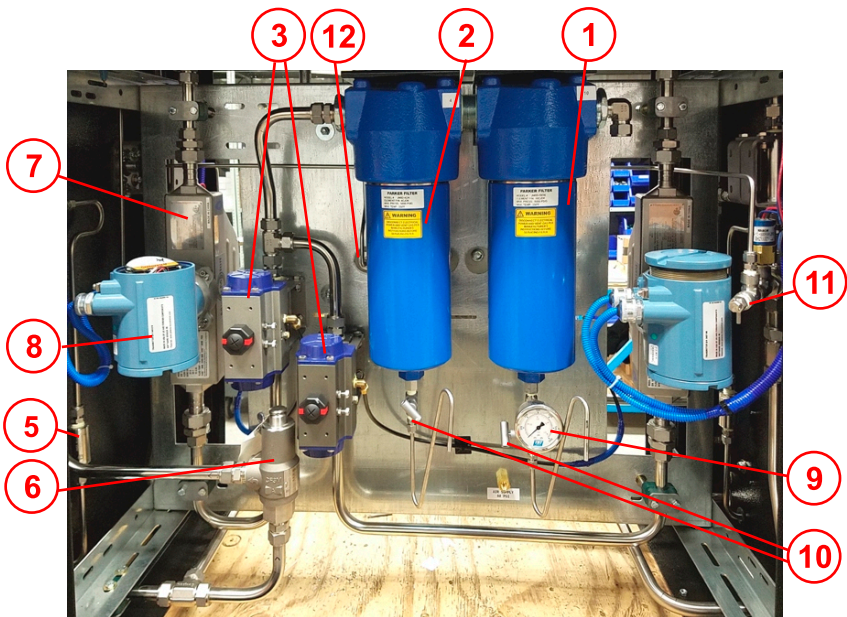
T7204-12CNG50 LOCATION DIAGRAM / MAINTENANCE BULLETIN



LOWER ENCLOSURE FRONT

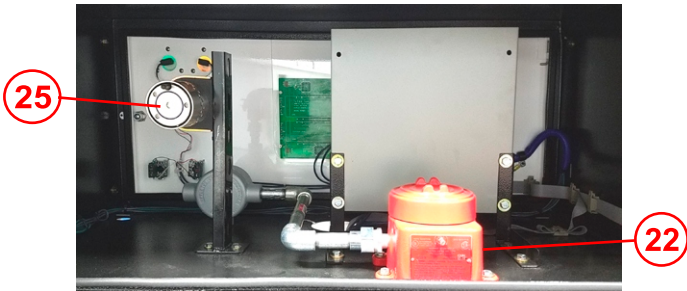


LOWER ENCLOSURE FRONT RIGHT

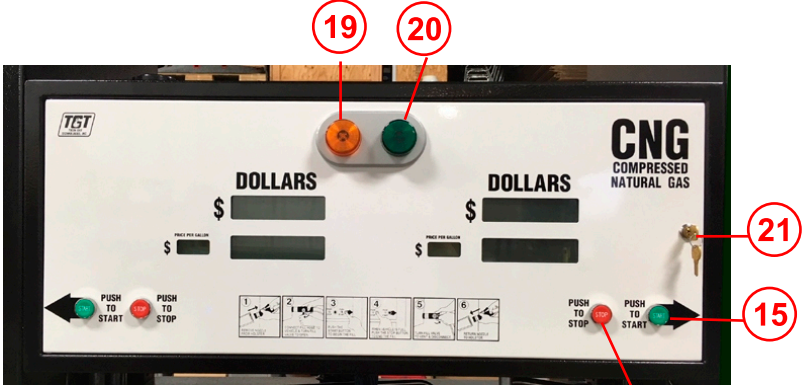


LOWER ENCLOSURE BACK

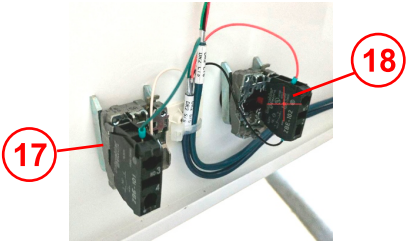
T7204-12CNG50 LOCATION DIAGRAM / MAINTENANCE BULLETIN



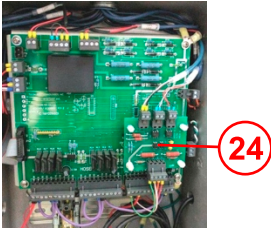
UPPER ENCLOSURE INSIDE BACK



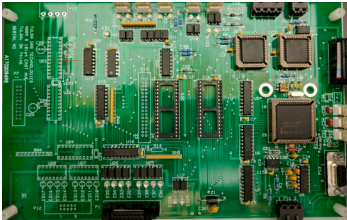
UPPER ENCLOSURE DOOR



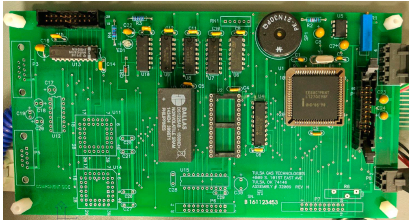
UPPER ENCLOSURE DOOR INTERIOR



CUSTOMER I/O BOARD



MAIN BOARD



MMI



GREY BOX DISPLAY



HOSE RETRACTOR

T7204-12CNG50 LOCATION DIAGRAM / MAINTENANCE BULLETIN

COMPONENTS

<i>Item</i>	<i>Q</i>	<i>D</i>	<i>Pa</i>	<i>M</i>
1	1	Park	J	Parker
	1	Parker10 M	10CJDK	Parker
2	1	Parker J6 F	JN	Parker
	1	Parker 4	4CJDK	Parker
3	2	3/	PN63SR	Bi-Torq
4	4	3/4" Oasis Caged Bal	BV	Oasis
5	2	3/8	CV2034NTSN	Oasis
6	2	Merc	14-	Mercer Valv
7	2	Flow Met	CNG050S290NCAAE	Emerson
8	2	Transmitter	2700I13ABAEZWZ	Emerson
9	3	5000L	5023	TGT
10	2	Needle valve	152-MFC	NoShok
11	2	Bleed Valve	4M-BV4SS	Parker
12	2	Pressure Transducer-6000lb	05-70-7744	Murp
13	2	Mechanical Pressure Switch	CD-1C-4500/WL293	Nason
14	2	Red hat Solenoid Valve	EF8320G184120/60110/50	Asco
15	2	Start Switch Electric XB4 Series	ZB4B	Schneider Elec.
16	2	Stop Switch Electric XB4 Series	ZB4B	Schneider Elec.
17	2	Start Switch Contact Block	ZB4B	Schneider Elec.
18	2	Stop Switch Contact Block	ZB4BZ102	Schneider Elec.
19	2	Amber Standby	IA-S-55A	TGT
20	2	Green Stand	IA-S-55G	TGT
21	4		C8052C642A14A	Comp X Inter.
22	1	Shock/Vibration Control Switch	VS2EX	Murphy
23	1	Explosion Proof		TGT
24	1	Standby Light Board	32013	TGT
	1	Customer I/O Board	32003	TGT
	1	Relay	RH1BUDC24V	IDEC
	1	Relay Socket Block	SH1B-05C	IDEC
25	1	Gas Detector	1420280	SEC

Maintenance Bulletin

1. Visual hose inspection, recommended weekly
2. Drain filter(s) at least monthly. The volume at each location will vary and filters should be drained according to need.
3. Leak check dispenser yearly. Additional leak checks should be performed after any service or repair to the dispenser.
4. Filter element replacement should take place yearly, or according to need based upon volume at each location.