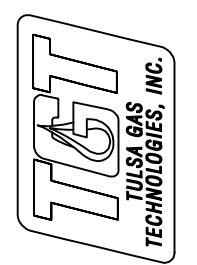
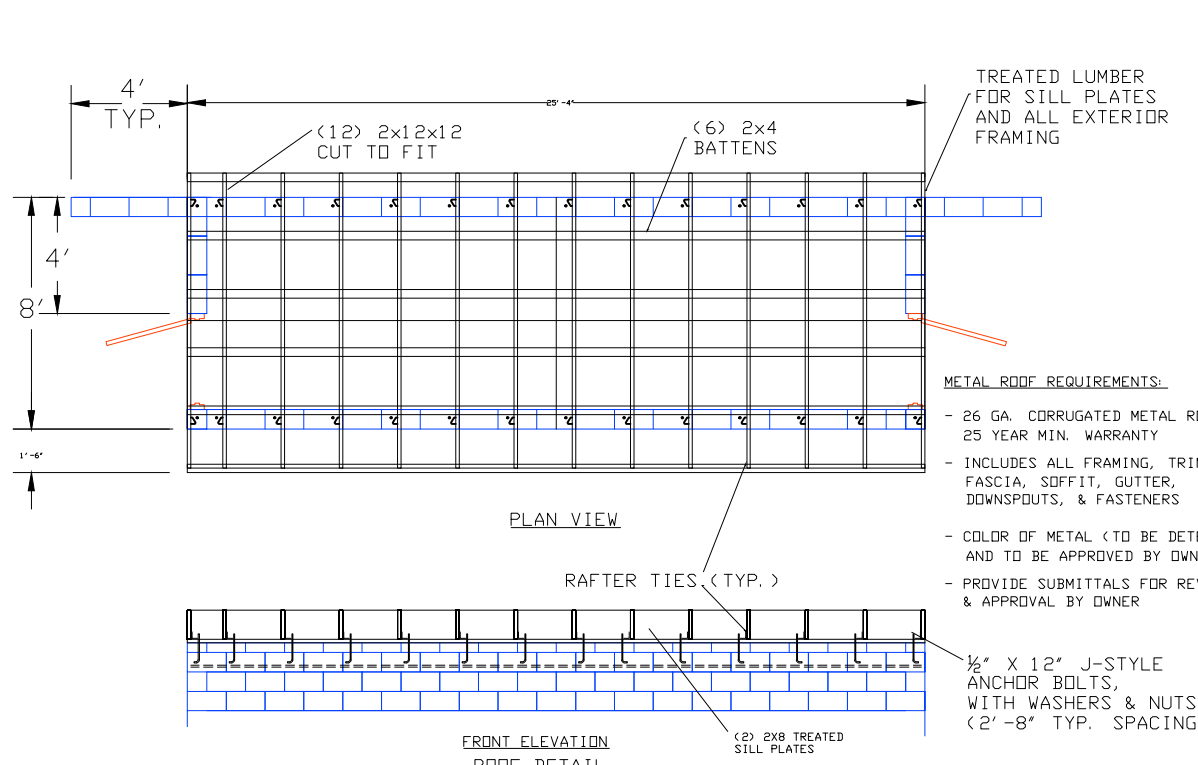


MODEL:	SEQUENCE:	DATE:
PROGRAM:	DRAWN BY: MB	08-21-14
SERIAL NO.:	CHECKED BY: -	
WORK ORDER:	APPROVED BY: -	
MATERIAL:	PART: -	
	DWG. NO. BLAKE TRUCKING EQUIPMENT LAYOUT	

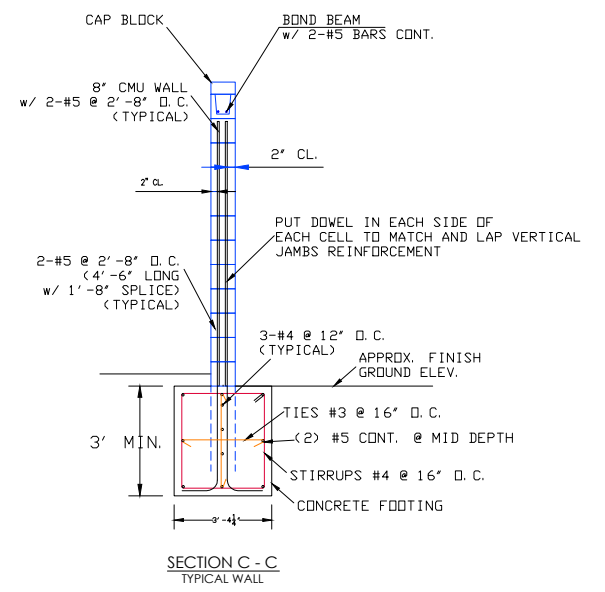
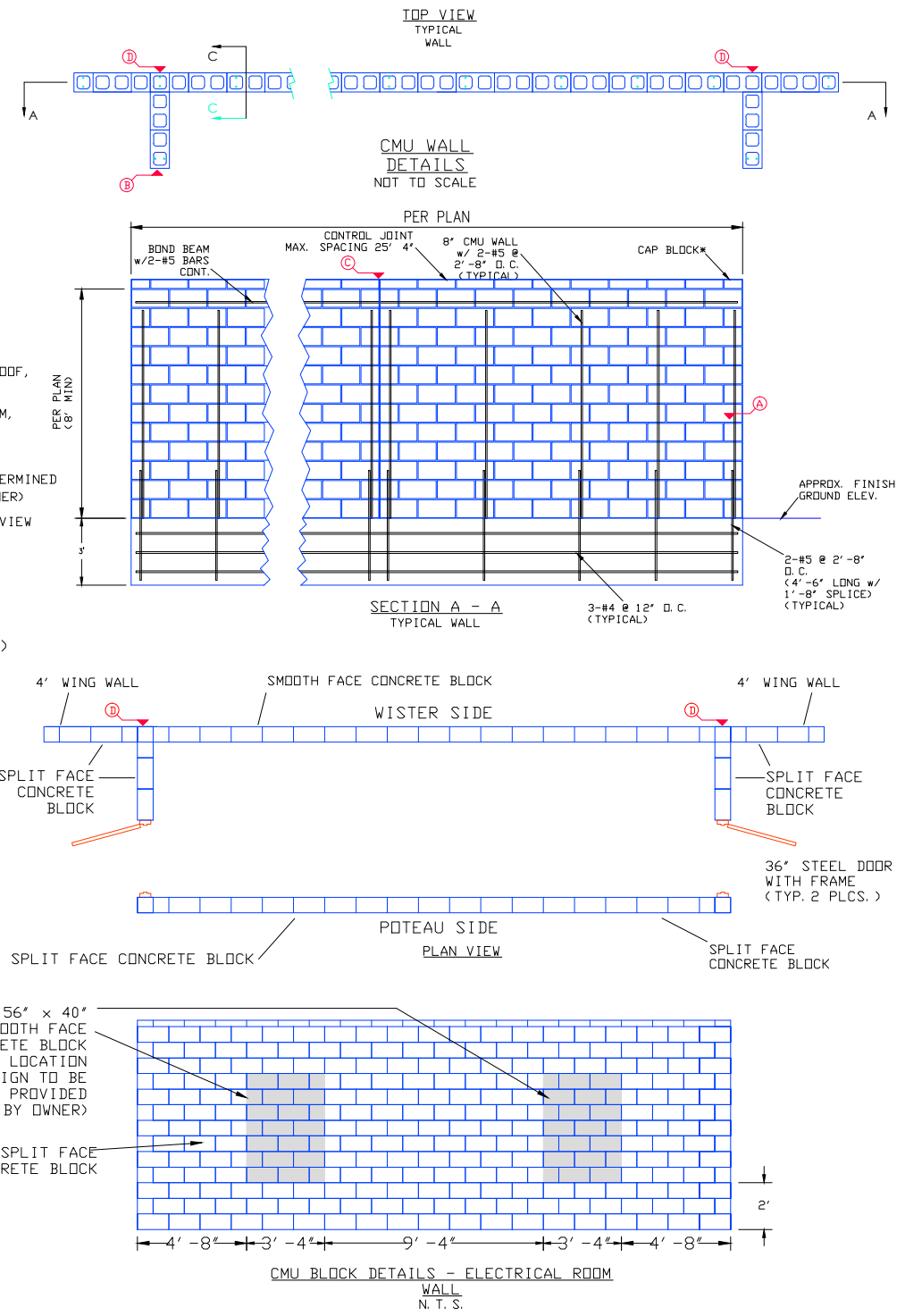
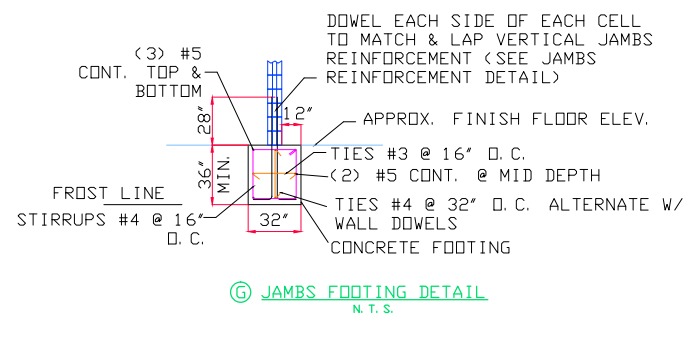
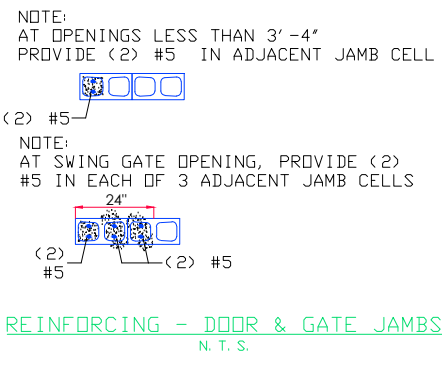
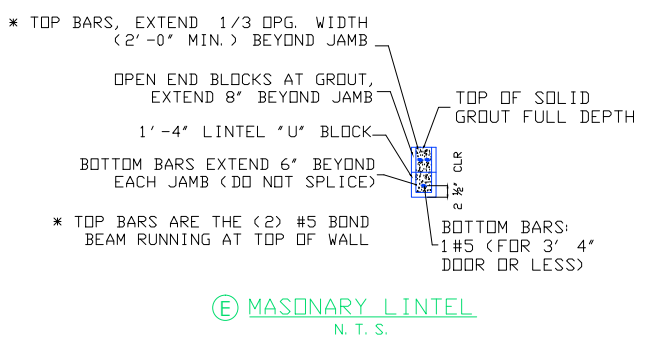
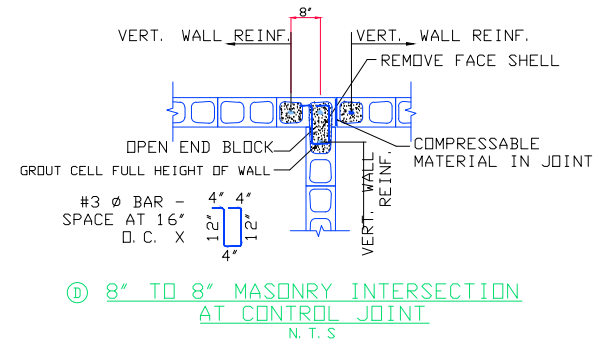
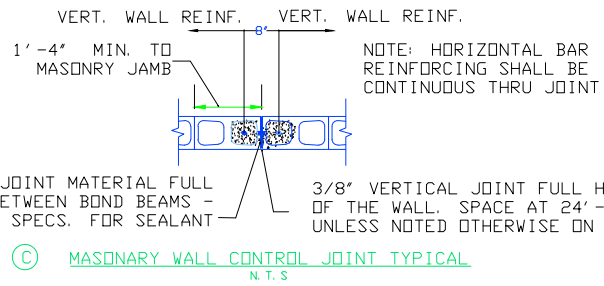
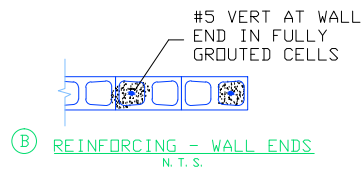
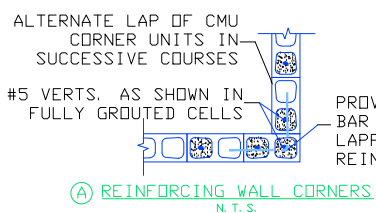
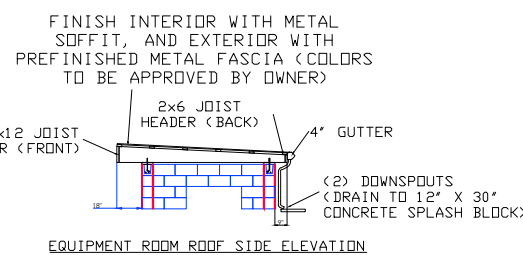
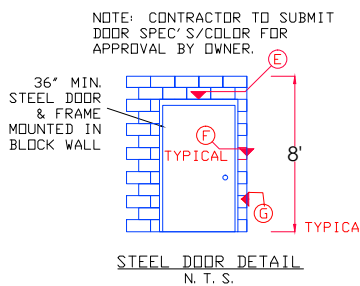
TULSA GAS TECHNOLOGIES, INC.
 4809 South 101st East Avenue
 Tulsa, OK 74146
 918-665-2641
 FAX: 918-665-2657



SERVER: \Station Site Plans\BLAKE TRUCKING



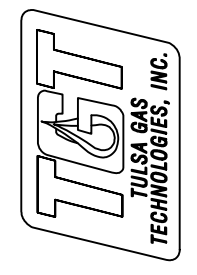
- METAL ROOF REQUIREMENTS:**
- 26 GA. CORRUGATED METAL ROOF, 25 YEAR MIN. WARRANTY
 - INCLUDES ALL FRAMING, TRIM, FASCIA, SOFFIT, GUTTER, DOWNSPOUTS, & FASTENERS
 - COLOR OF METAL (TO BE DETERMINED AND TO BE APPROVED BY OWNER)
 - PROVIDE SUBMITTALS FOR REVIEW & APPROVAL BY OWNER



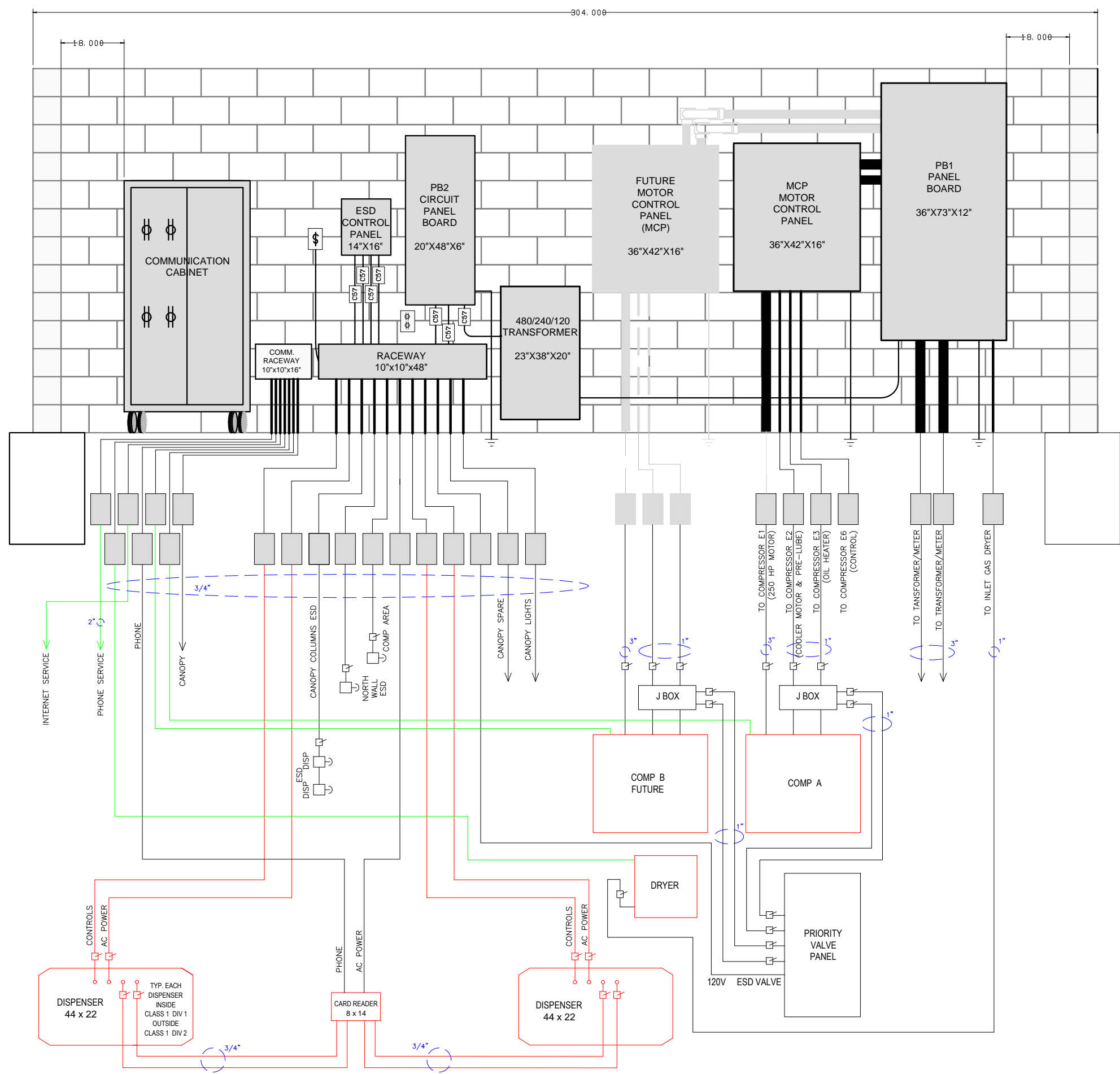
- WALL NOTES:**
1. SEAL THE WALL
 2. ADMIT CAP BLOCKS UNDER COVERED ELECTRICAL AREA IF NECESSARY
 3. PUT BRICK TIES ON WALL(S) WITH ROCK/BRICK SKIN
- STRUCTURAL GENERAL NOTES:**
1. REINFORCED CONCRETE: F'c = 4,000 P. S. I. (28 DAY)
 2. REINFORCING STEEL: GRADE 60 STEEL
 3. MASONRY:
 - A. NORMAL WIGHT CONCRETE MASONRY UNITS
 - 1) 28 DAY COMPRESSIVE STRENGTH F'm = 1500 P. S. I.
 - 2) Fb = 500 P. S. I.
 - B. GROUT AND MORTAR
 - 1) 28 DAY COMPRESSIVE STRENGTH GROUT 2,000 P. S. I.
 - 2) 28 DAY COMPR. STRENGTH TYPE S MORTAR = 1800 P. S. I.
 - 3) 28 DAY COMPR. STRENGTH TYPE M MORTAR = 2,500 P. S. I.
 4. WIND LOADING: USE 2006 UNIFORM BUILDING CODE WITH 1W = 0.87, BASIC WIND SPEED OF 90 M. P. H. EXPOSURE "C"

MODEL:	SEQUENCE	PROGRAM:	SERIAL NO.:	WORK ORDER:	MATERIAL:	DRAWN BY:	MB	DATE
								09-09-13

TULSA GAS TECHNOLOGIES, INC.
4809 South 101st East Avenue
Tulsa, OK 74146
918-665-2641
FAX: 918-665-2657



SERVER: \Station Site Plans\BLAKE TRUCKING

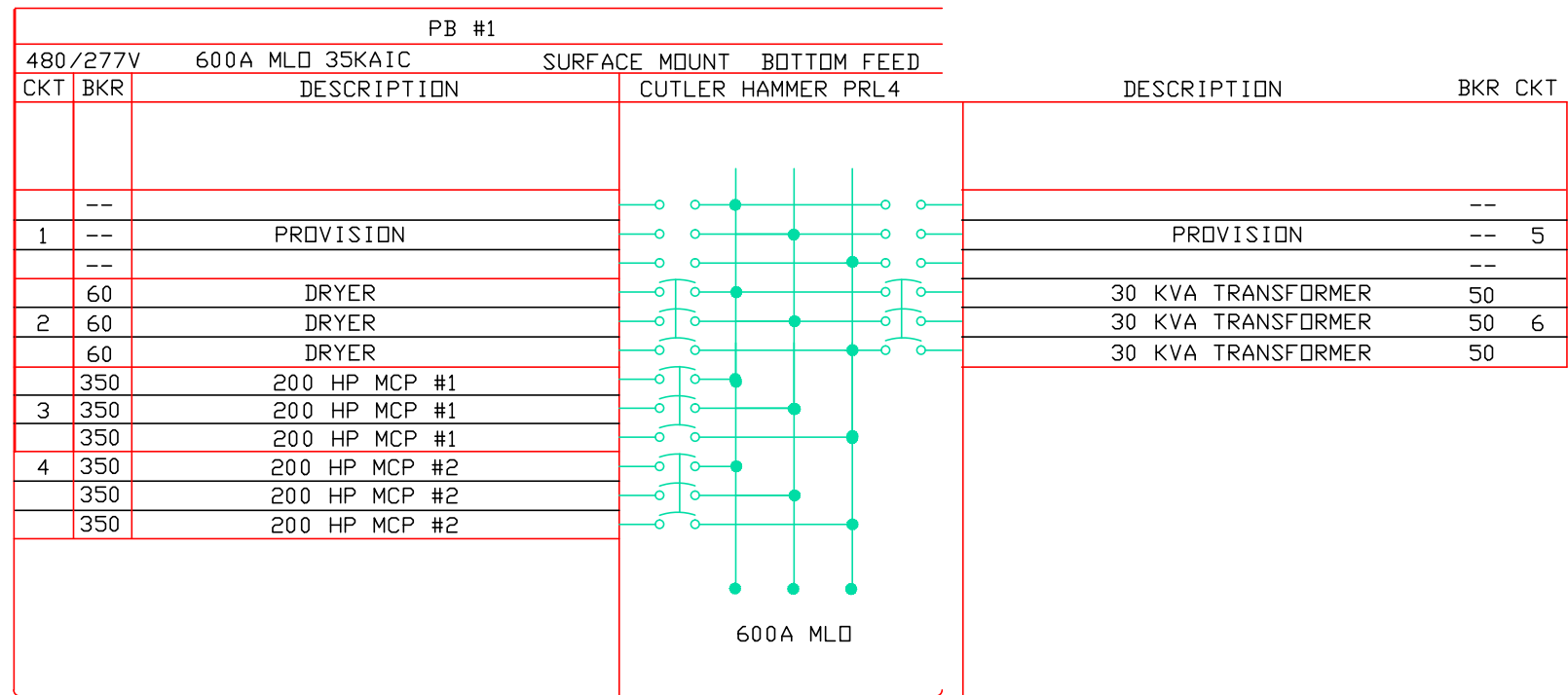


TULSA GAS TECHNOLOGIES, INC.
 4809 South 101st East Avenue
 Tulsa, OK 74146
 918-665-2641
 FAX: 918-665-2657

MODEL:	DRAWN BY: MB	DATE
SEQUENCE: -	CHECKED BY: -	09-09-13
PROGRAM: -	APPROVED BY: -	
SERIAL NO.: -	PART: -	
WORK ORDER: -	DWG. NO. PANEL_ROOM	
MATERIAL: -		

SERVER: \Station Site Plans\BLAKE TRUCKING

600 AMP

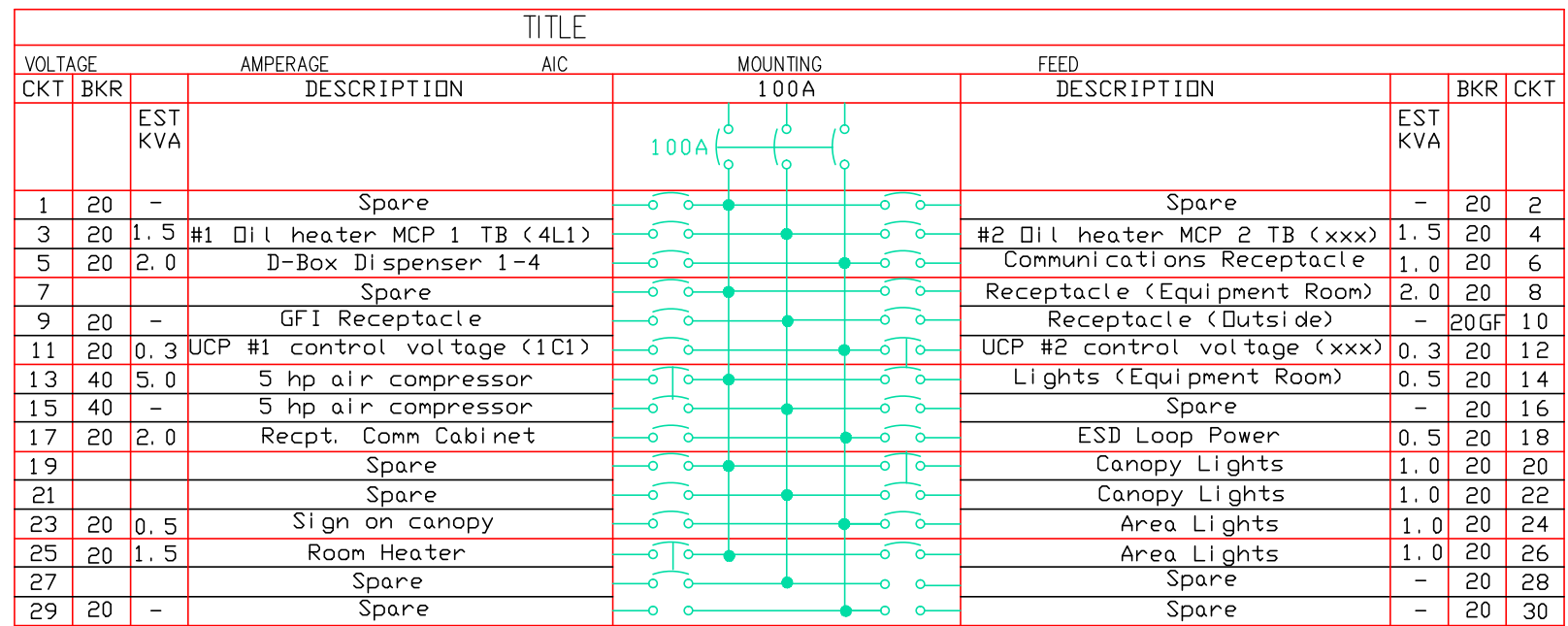


DRYER	29 KW	-	51 AMPS
BLOWER MOTOR	3 HP	-	4.8 AMPS
COOLER MOTOR	2 HP	-	3.4 AMPS
PRE-LUBE PUMP	1 HP	-	2.1 AMPS
COOLER FAN	10 HP	-	14 AMPS
COMPRESSOR	200 HP	-	240 AMPS

SERVICE ENTRANCE

- 2 - 3" CONDUITS TO TRANS
- L1 - 2 Ø 350 MCM
- L2 - 2 Ø 350 MCM
- L3 - 2 Ø 350 MCM
- G - 1 1/0 AWG

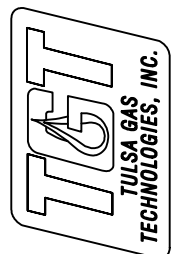
PB #2

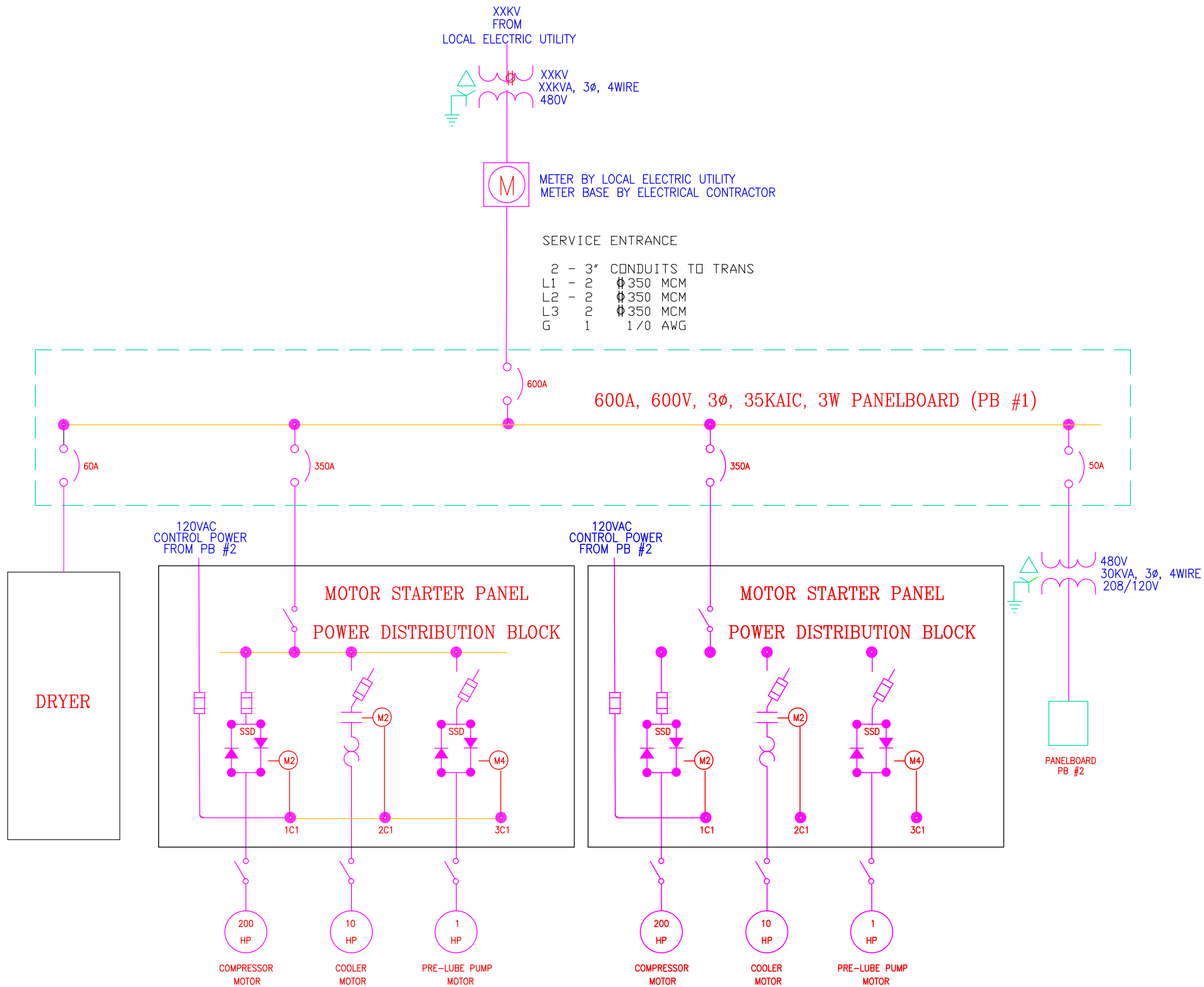


UCP = UNIT CONTROL PANEL

MODEL:		DRAWN BY:	MB	DATE:	09-09-13
SEQUENCE:	-	CHECKED BY:	-		
PROGRAM:	-	APPROVED BY:	-		
SERIAL NO.:	-	PART:	-		
WORK ORDER:	-	DWG. NO. PANELBOARD			
MATERIAL:	-	SERVER: \Station Site Plans\BLAKE TRUCKING			

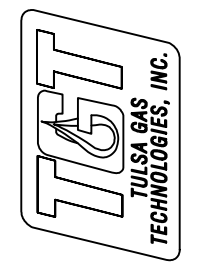
TULSA GAS TECHNOLOGIES, INC.
 4809 South 101st East Avenue
 Tulsa, OK 74146
 918-665-2641
 FAX: 918-665-2657



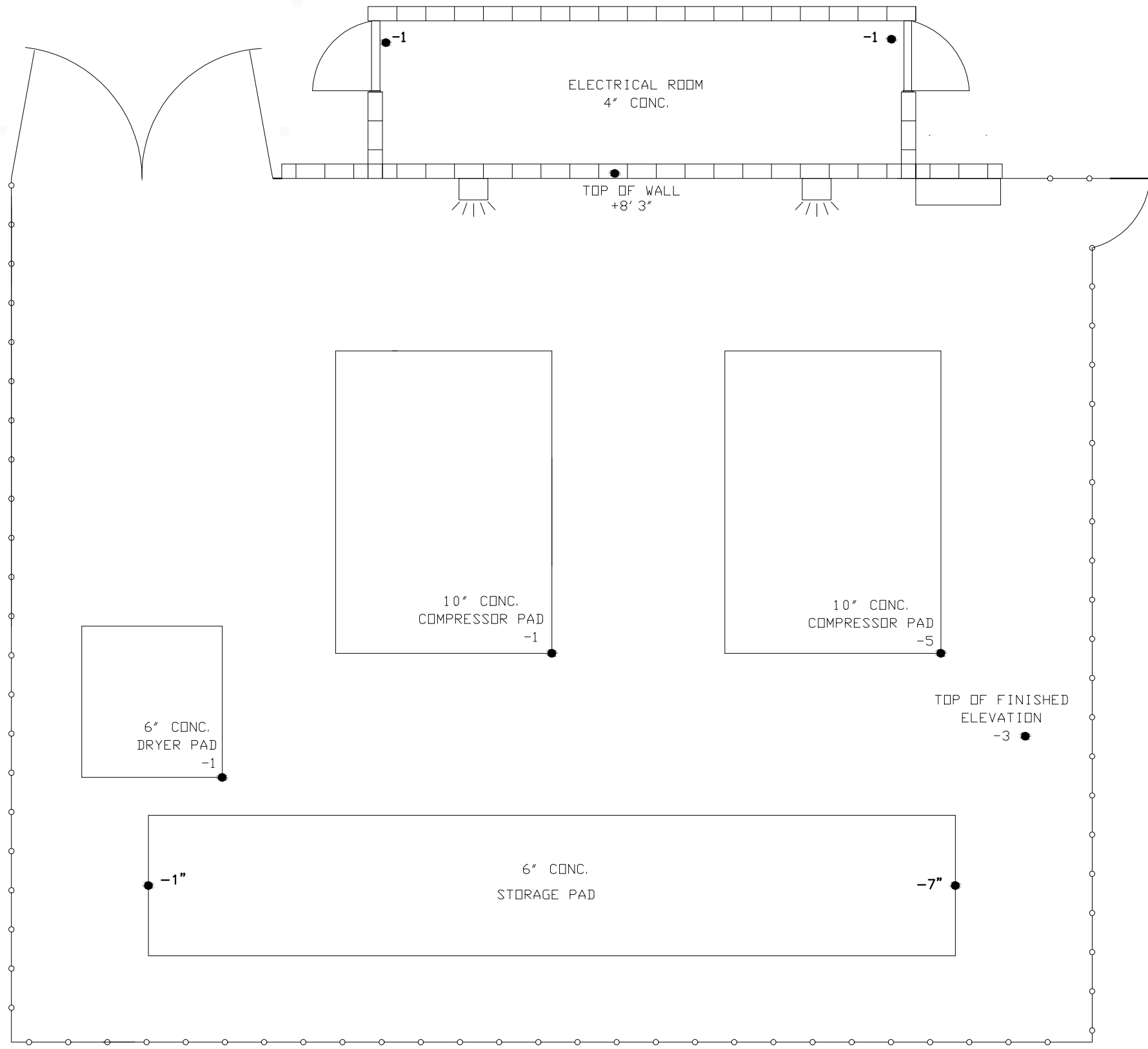


MODEL:	DATE
SEQUENCE -	09-09-13
PROGRAM: -	
SERIAL NO.: -	
WORK ORDER: -	
MATERIAL: -	
DRAWN BY: MB	
CHECKED BY: -	
APPROVED BY: -	
PART: -	
DWG. NO. ONE LINE DIAGRAM	

TULSA GAS TECHNOLOGIES, INC.
4809 South 101st East Avenue
Tulsa, OK 74146
918-665-2641
FAX: 918-665-2657

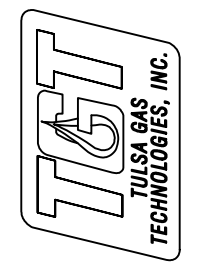


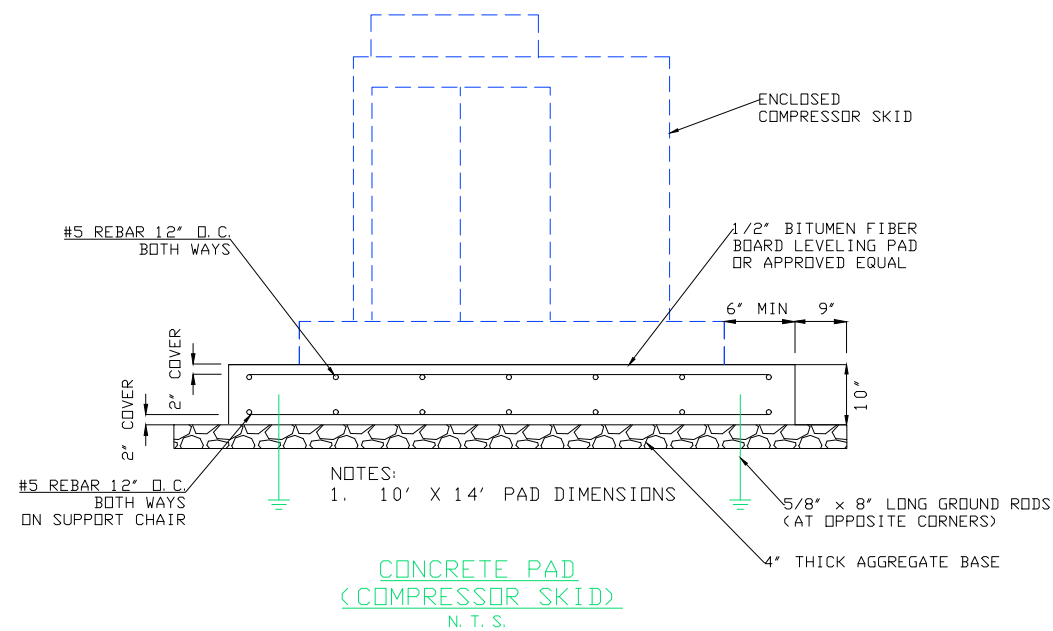
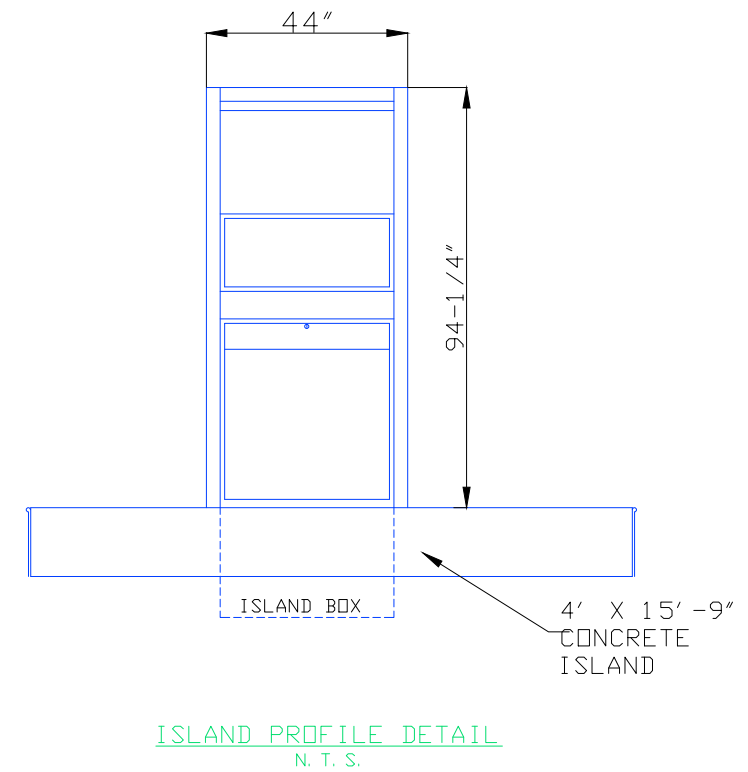
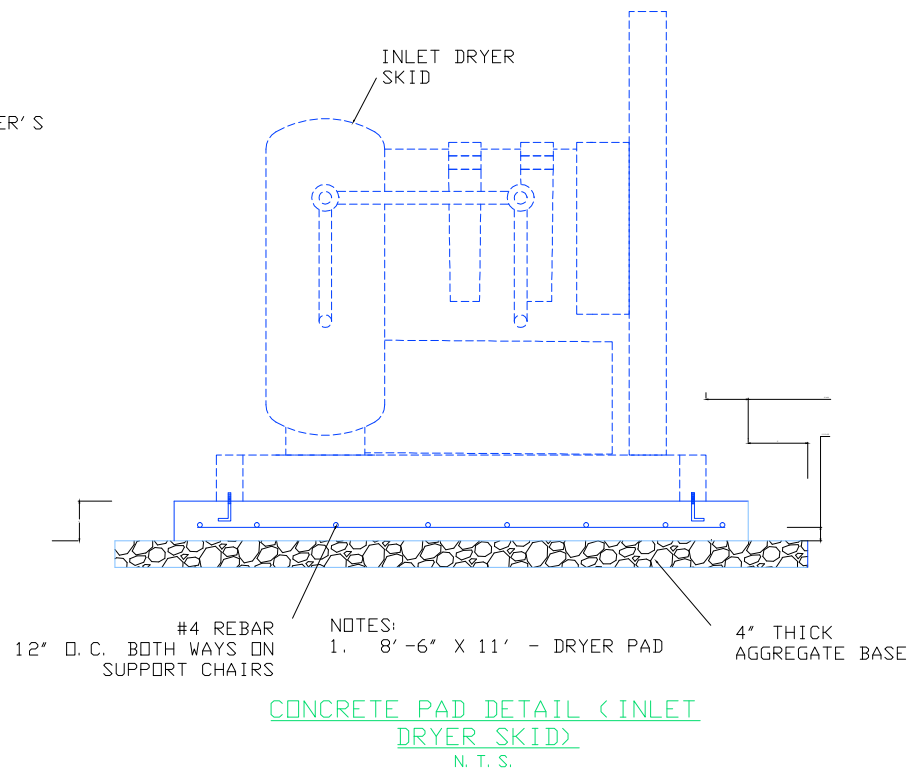
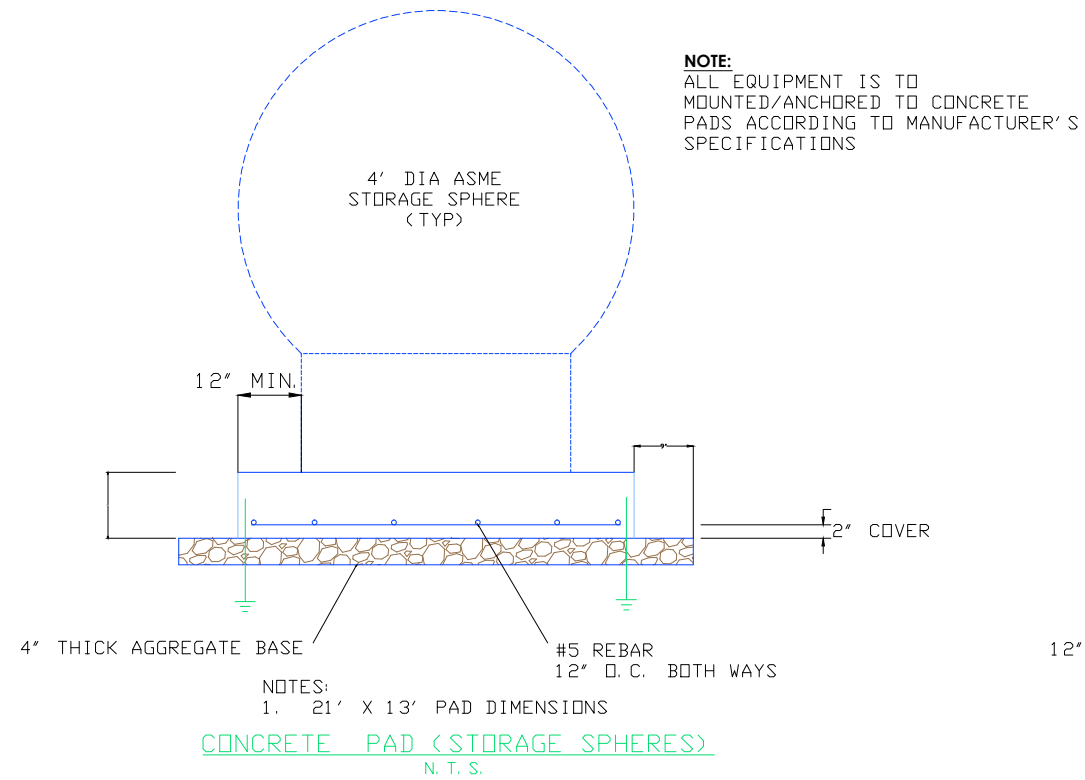
SERVER: \Station Site Plans\BLAKE TRUCKING



MODEL:		DRAWN BY:	MB	DATE
SEQUENCE	-	CHECKED BY:	-	09-09-13
PROGRAM:	-	APPROVED BY:	-	
SERIAL NO.:	-	PART:	-	
WORK ORDER:	-	DWG. NO. CONCRETE ENCLOSURE DETAIL		
MATERIAL:	-	SERVER:\Station Site Plans\BLAKE TRUCKING		

TULSA GAS TECHNOLOGIES, INC.
 4809 South 101st East Avenue
 Tulsa, OK 74146
 918-665-2641
 FAX: 918-665-2657





NOTE:
MOUNT/ANCHOR ALL EQUIPMENT TO CONCRETE PADS ACCORDING TO MANUFACTURER'S SPECIFICATIONS.

NOTE:
SECURE ALL ABOVE GRADE STAINLESS STEEL TUBING TO WALL FLOOR VIA APPROVED HIGH PRESSURE TUBING FASTENERS. 4' MAX DISTANCE BETWEEN FASTENERS ON TUBING. SECURE ALL FITTINGS WITHIN 6" OF FITTING WHERE PRACTICAL.

MODEL:	SEQUENCE	—	DRAWN BY:	MB	DATE
PROGRAM:	—	—	CHECKED BY:	—	09-09-13
SERIAL NO.:	—	—	APPROVED BY:	—	
WORK ORDER:	—	—	PART:	—	
MATERIAL:	—	—	DWG. NO. PAD ELEVATION 2		

TULSA GAS TECHNOLOGIES, INC.
4809 South 101st East Avenue
Tulsa, OK 74146
918-665-2641
FAX: 918-665-2657



SERVER: \Station Site Plans\BLAKE TRUCKING