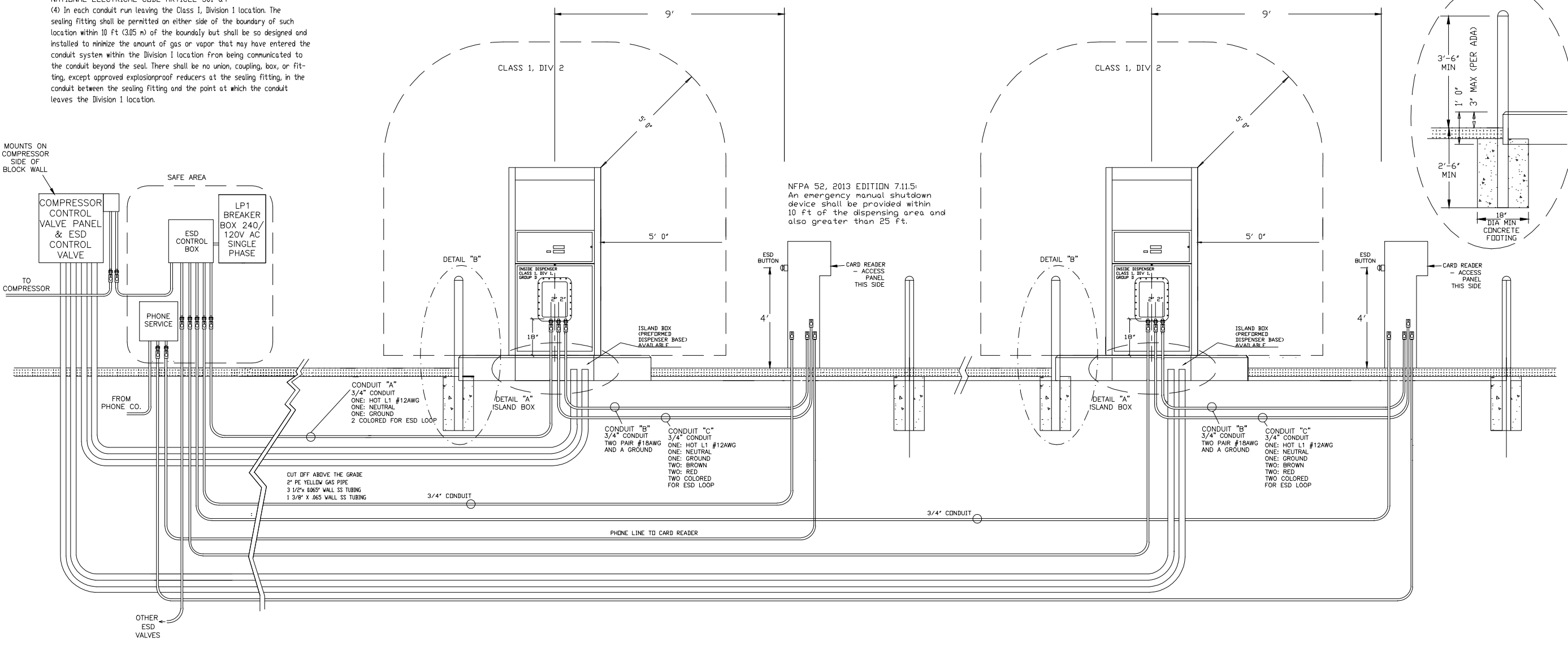


NATIONAL ELECTRICAL CODE ARTICLE 501-a.4
 (4) In each conduit run leaving the Class 1, Division 1 location. The sealing fitting shall be permitted on either side of the boundary of such location within 10 ft (3.05 m) of the boundary but shall be so designed and installed to minimize the amount of gas or vapor that may have entered the conduit system within the Division 1 location from being communicated to the conduit beyond the seal. There shall be no union, coupling, box, or fitting, except approved explosionproof reducers at the sealing fitting, in the conduit between the sealing fitting and the point at which the conduit leaves the Division 1 location.



DATE	09-09-13
DRAWN BY:	MB
CHECKED BY:	-
APPROVED BY:	-
PART:	-
DWG. NO.	ISLAND CONDUIT FOR 2 PARALLEL DISPENSERS
MODEL:	SEQUENCE - PROGRAM - SERIAL NO. - WORK ORDER - MATERIAL -
SERVER/TGT DWG'S & ART/STARTUP DRAWINGS/ISLAND CONDUIT FOR 2 PARALLEL DISPENSERS	

TULSA GAS TECHNOLOGIES, INC.
 4809 South 101st East Avenue
 Tulsa, OK 74146
 918-665-2641
 FAX: 918-665-2657

