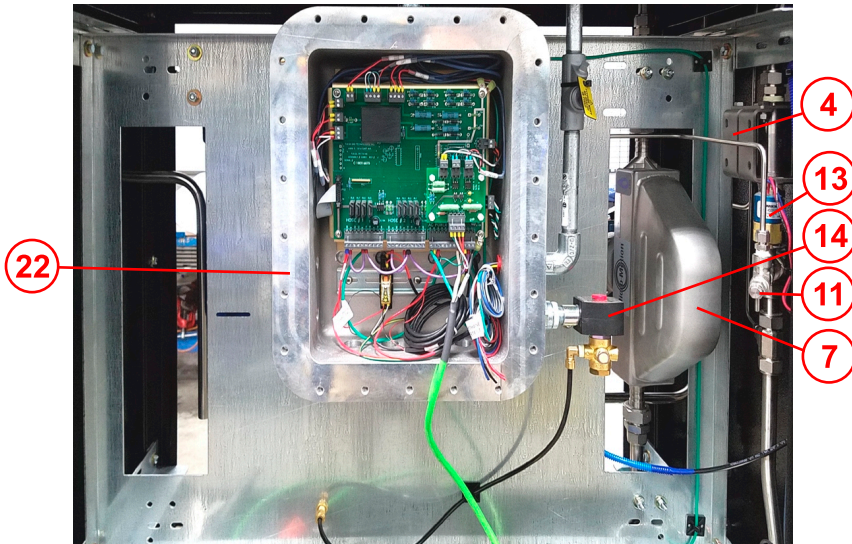
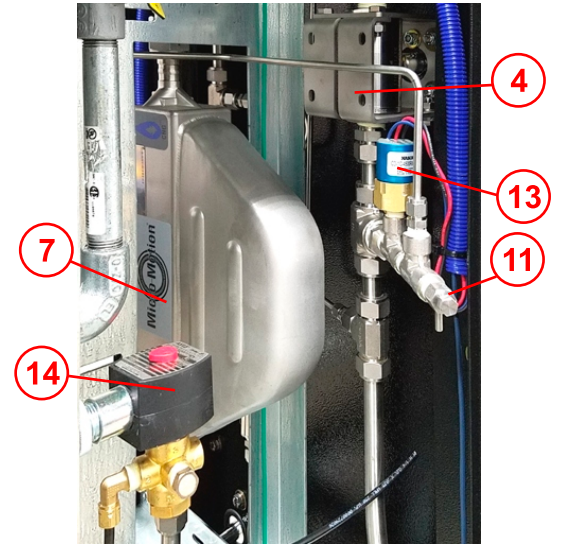


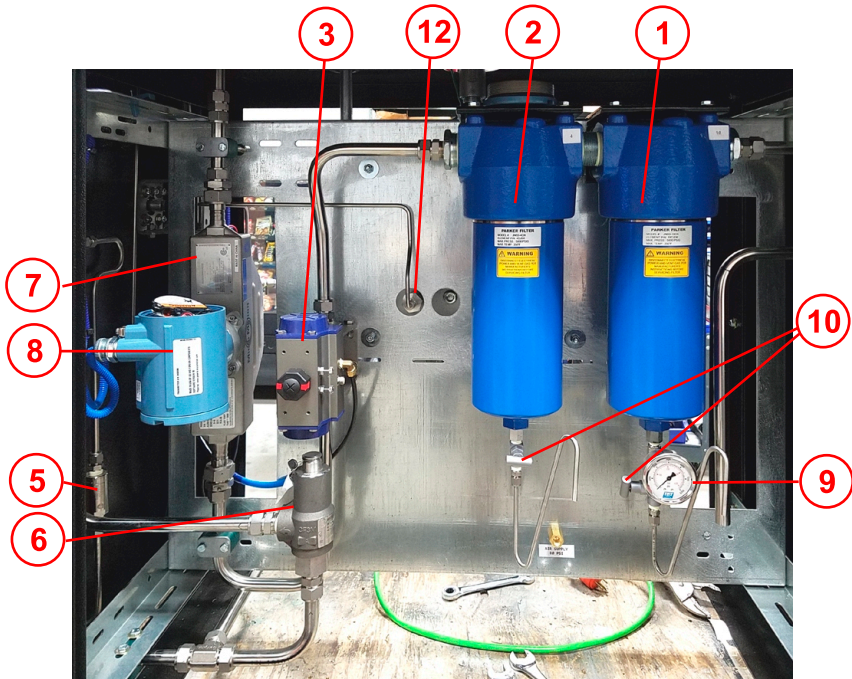
**T7104-12CNG50 LOCATION DIAGRAM / MAINTENANCE BULLETIN**



**LOWER ENCLOSURE FRONT**

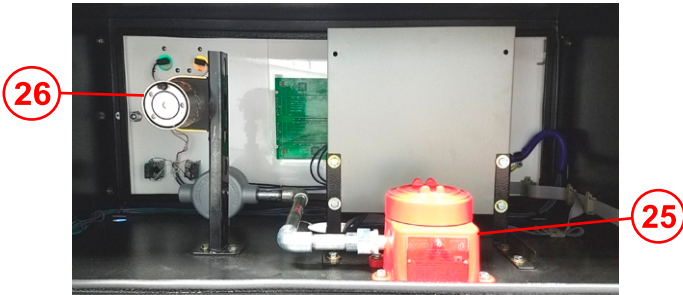


**LOWER ENCLOSURE FRONT RIGHT**

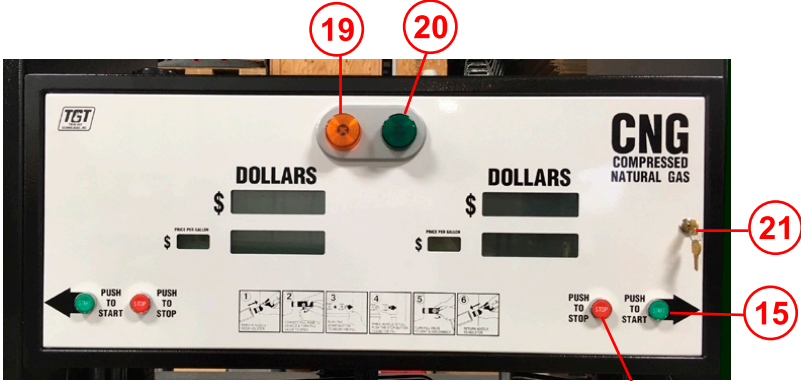


**LOWER ENCLOSURE BACK**

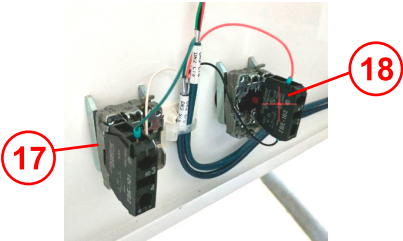
**T7104-12CNG50 LOCATION DIAGRAM / MAINTENANCE BULLETIN**



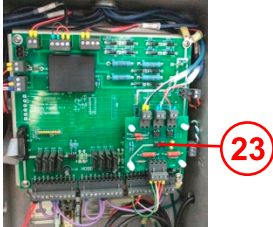
**INSIDE UPPER ENCLOSURE BACK**



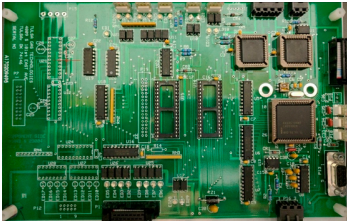
**UPPER ENCLOSURE DOOR**



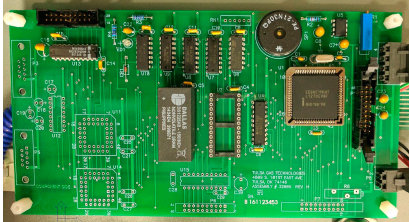
**UPPER ENCLOSURE DOOR INTERIOR**



**CUSTOMER I/O BOARD**



**MAIN BOARD**



**MMI**



**GREY BOX DISPLAY**



**HOSE RETRACTOR**

**T7104-12CNG50 LOCATION DIAGRAM / MAINTENANCE BULLETIN**

**COMPONENTS**

<b><i>Ite</i></b>	<b><i>Qty</i></b>	<b><i>Des</i></b>	<b><i>Part Number</i></b>	<b><i>M</i></b>
1	1	Par	J	Parker
	1	Parker10 Micro	10CJDK	Parker
2	1	Parker J6 Filter 4 Micron	JN6P4-CN	Parker
	1	Parker 4 Micron E	4CJDK	Parker
3	1	3/4"	PN63SR	Bi-Torq
4	2	3/4" O	BV7	Oas
5	-	3/8" Check Valve	CV2034NTSN	Oasis
6	1	Mercer 4500lb	14-22B112JX1	Mercer Valve
7	1	Flow Meter MicroMotion	CNG050S290NCA	Emerson
8	1	Transmitter	2700I	Emerson
9	2	5000LB TGT Gaug	50230158	TGT
10	2	Needle valve	152-MFC	NoShok
11	1	Bleed Valve	4M-BV4SS	Parker
12	1	Pressure Transducer 6000lb.	PXT-K 6000	Murphy
13	1	Mechanical Pressure Switch	CD-1C-4500/W	Nason
14	1	Red hat Solenoid Valve	EF8320G184 20/60110/50	Asco
15	1	Start Switch Electric XB4 Series	ZB4	Schneider Elec.
16	1	Stop Switch Electric XB4 Series	ZB4	Schneider Elec.
17	1	Start Switch Contact Block	ZB4BA434	Schneider Elec.
18	1	Stop Switch Contact Block	ZB4	Schneider Elec.
19	1	Amber Stand	IA-S-55A	TGT
20	1	Green Stand	IA-S-55G	TGT
21	4	Lock Set	C8052C642A14A	Comp X Inter.
22	1	Explosion Proof Box		TGT
23	1	Gas Detector	1420280	Sensor Electronics
24	1	Standby Light Board	32013	TGT
25	1	Shock & Vibration Switch	VS2	Murphy
26	1	Hydrocarbon Gas Detector	1420280	Sensor Elec. Corp.
	1	Customer I/O Boar	32003	TGT
	1	Relay	RH1BUDC24V	IDEC
	1	Relay Socket Bloc	SH1B05C	IDEC

Maintenance Bulletin

1. Visual hose inspection, recommended weekly
2. Drain filter(s) at least monthly. The volume at each location will vary and filters should be drained according to need.
3. Leak check dispenser yearly. Additional leak checks should be performed after any service or repair to the dispenser.
4. Filter element replacement should take place yearly, or according to need based upon volume at each location.