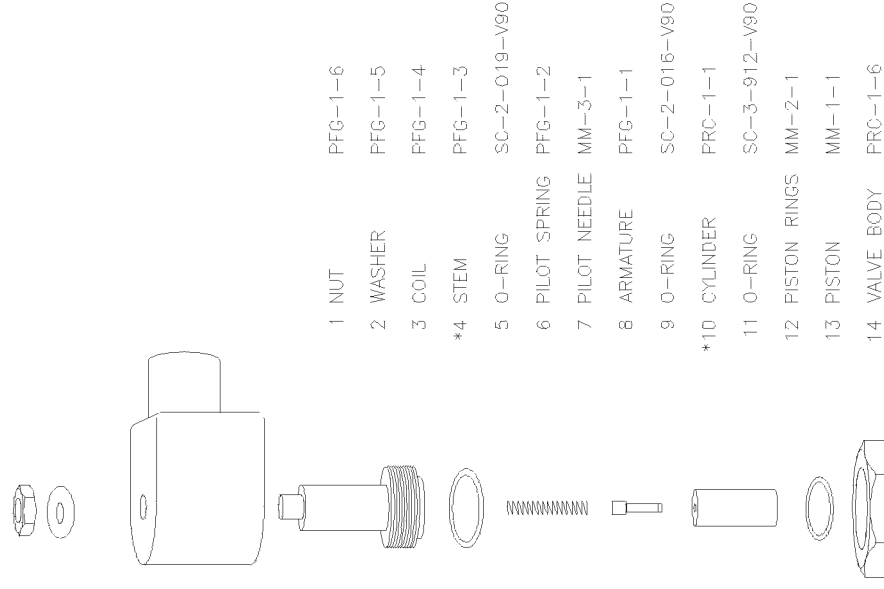
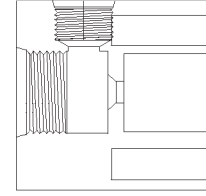
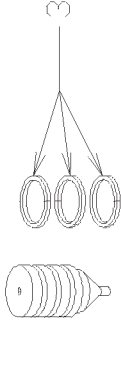


\*Torque #10 CYLINDER to 85ft./lbs  
 \*Torque #4 STEAM to 12.5 ft./lbs with one drop of #242 Loctite  
 Torque Inlet and Outlet Fittings to 27 ft./lbs

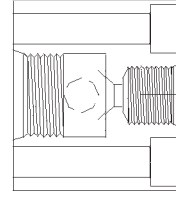
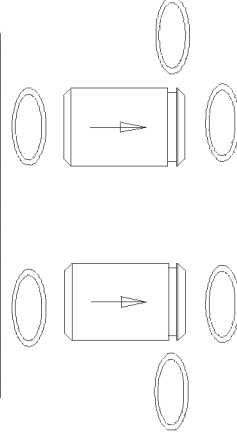
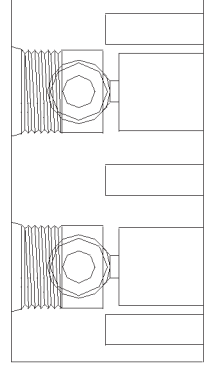
1. INSTALL PISTON RINGS ONTO THE PISTON, ROTATE END GAPS 180 DEGREES FROM EACH OTHER.
2. INSTALL PISTON IN CYLINDER.
3. ROLL ON THE LARGE O-RING (#4). USE A MODERATE AMOUNT OF O-RING LUBRICATION (TOO MUCH CAN CAUSE THE O-RING TO HYDRAULIC OUT OF THE GLAND WHEN TORQUING THE CYLINDER).
4. TORQUE THE CYLINDER (#5) TO 85 FOOT POUNDS.
5. INSTALL THE SMALL O-RING (#6) INTO THE RING GLAND ON THE TOP OF THE CYLINDER.
6. INSTALL THE PILOT NEEDLE INTO THE ARMATURE WITH THE RUBBER TIP FIRST.
7. INSTALL THE SPRING ON TOP OF PILOT NEEDLE.
8. HOLD THE ARMATURE ASSEMBLY WITH THE NEEDLE DOWNWARD AND SLIDE THE STEM DOWN OVER THE ARMATURE.
9. TURN THE STEM ASSEMBLY OVER WITH THE RUBBER TIP UPWARD.
10. SET THE MIDDLE SIZED O-RING (#10) ON THE TOP OF THE STEM ASSEMBLY.
11. HOLD THE STEM ASSEMBLY UPWARD AND TURN OVER THE VALVE BODY ASSEMBLY, MAKING SURE THE O-RING STAYS IN THE GLAND.
12. THREAD THE VALVE BODY ON TO THE STEM ASSEMBLY UNTIL THE STEM IS BOTTOM OUT.
13. TORQUE THE STEM TO 12.5 FOOT POUNDS.
14. INSTALL THE VALVE BODY ASSEMBLY TO THE COIL AND THREAD ON THE NUT.
15. TORQUE THE NUT SO THAT THE COIL CAN BE TURNED BY HAND.



- 1 NUT PFG-1-6
- 2 WASHER PFG-1-5
- 3 COIL PFG-1-4
- \*4 STEM PFG-1-3
- 5 O-RING SC-2-019-V90
- 6 PILOT SPRING PFG-1-2
- 7 PILOT NEEDLE MM-3-1
- 8 ARMATURE PFG-1-1
- 9 O-RING SC-2-016-V90
- \*10 CYLINDER PRC-1-1
- 11 O-RING SC-3-912-V90
- 12 PISTON RINGS MM-2-1
- 13 PISTON MM-1-1
- 14 VALVE BODY PRC-1-6



END



END

O-RING:  
 2-020-V90  
 4 TIMES



TULSA GAS TECHNOLOGIES, INC.  
 4809 South 101st East Avenue  
 Tulsa, OK 74146  
 (918) 665-2641 FAX: (918) 665-2657

MODEL:	DRAWN BY: MB	DATE:
SEQUENCE: -	CHECKED BY: -	-
PROGRAM: -	APPROVED BY: -	
SERIAL NO.: -	PART:	
WORK ORDER: -	DWG. NO. SV1-3bonk-3D	