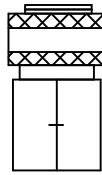


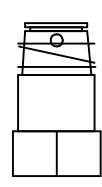
ASSEMBLY

PARKER COUPLING
PART NO. SST-1
MODIFICATIONS



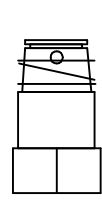
2. GRIND BACK
CORNERS
TO ROUND.

PARKER COUPLING
SST-1 AFTER
MODIFICATIONS



1. REMOVE AND SAVE
CLIP, THEN REMOVE
THIS RING AND
DISCARD

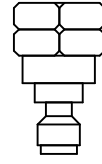
PARKER COUPLING
SST-1
WITH BALLS AND
SPRING INTACT



3. INSERT INTO TGT-ILBA
WITH BALLS AND
SPRING INTACT



4. RETURN CLIP
TO SST-1 TO
HOLD IT IN
POSITION



5. TO INSERT NIPPLE
(PARKER SST-N1)
PULL TGT-IVBA BACK
AGAINST SST-1



TULSA GAS TECHNOLOGIES, INC.
4809 South 101st East Avenue
Tulsa, OK 74146
(918) 665-2641 FAX: (918) 665-2657

MODEL:	---	DRAWN BY:	MB	DATE:	02-10-06
SEQUENCE:	---	CHECKED BY:	---		
PROGRAM:	---	APPROVED BY:	---		
SERIAL NO.:	---	PART:	INLINE VENT BREAKAWAY		
WORK ORDER:	---	PART NO.:	TGT-IVBA		
NOTE: ANODIZE BLUE					