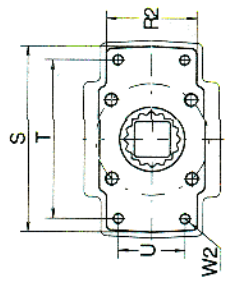
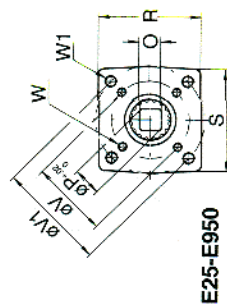
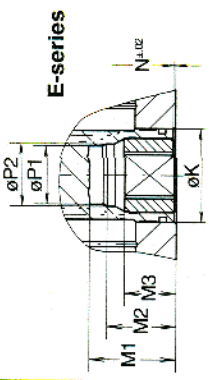
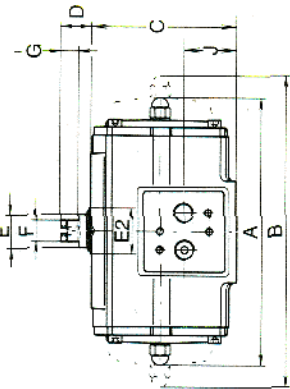
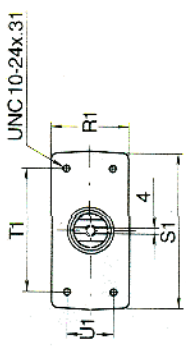
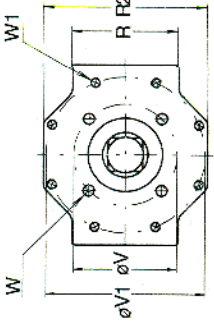
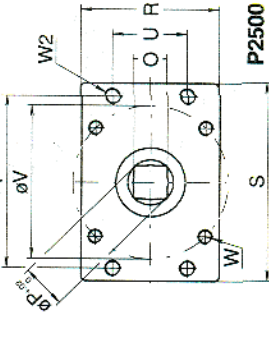
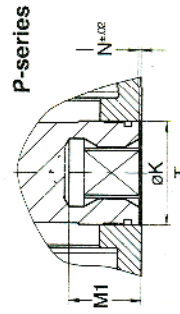
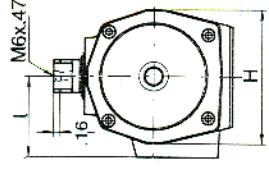
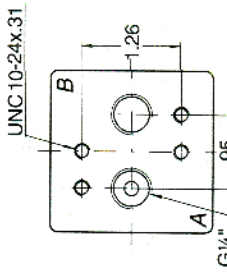


DIMENSIONSHEET STANDARD ACTUATOR - ISO -

E/P

Dim. (in mm.)	Actuator's E-series											P-series	
	E 12	E 25	E 40	E 65	E 100	E 200	E 350	E 500	E 650	E 1000	E 1600	P 2500	P 4000
A DA	6.26	7.09	7.83	8.70	9.51	11.14	12.01	15.24	16.69	20.31	25.06	14.88	19.76
B SR	6.77	8.03	9.80	10.51	11.17	14.17	15.24	18.78	20.35	25.06	20.35	22.44	32.83
C	3.15	3.66	4.13	4.65	5.63	7.13	8.66	10.20	10.20	11.69	14.02	14.96	14.96
D	0.79	0.79	0.79	0.79	0.79	0.79	0.79	1.18	1.18	1.18	1.18	1.18	1.18
E	0.91	1.18	1.18	1.18	1.18	1.77	1.77	2.56	2.56	2.95	2.95	2.56	3.15
E2	0.39	0.55	0.55	0.55	0.55	0.75	0.75	1.42	1.42	1.42	1.42	1.42	1.42
F	0.47	0.47	0.47	0.47	0.47	0.47	0.47	0.39	0.39	0.39	0.39	0.39	0.39
G	2.91	3.39	3.86	4.25	5.04	6.81	8.15	9.03	10.43	10.43	13.78	14.96	14.96
H	1.81	2.09	2.26	2.48	2.87	3.71	4.45	4.96	5.59	7.28	7.87	7.87	7.87
I	1.26	1.32	1.54	1.59	1.99	2.85	3.33	4.15	4.74	7.01	7.46	7.46	7.46
J	0.94	1.30	1.30	1.50	2.17	2.17	2.68	2.85	3.74	3.35	4.72	3.35	4.72
K	1.36	1.36	1.36	1.36	1.97	1.97	2.05	2.52	3.23	2.60	3.03	2.60	3.03
M1	0.669	0.669	0.669	0.787	1.161	1.161	1.161	1.161	1.949	2.303	-	-	-
M2	0.04	0.04	0.04	0.06	0.06	0.06	0.06	0.06	0.06	0.06	0.12	0.12	0.06
M3	0.437	0.556	0.556	0.753	0.871	1.068	1.068	1.424	1.817	1.817	2.173	1.817	2.173
O max.	0.433	0.551	0.551	0.748	0.866	1.063	1.063	1.417	1.811	1.811	2.165	1.811	2.165
O min.	0.555	0.713	0.713	0.992	1.110	1.425	1.425	1.896	2.370	2.370	2.843	2.370	2.843
P	0.555	0.713	0.831	0.909	1.303	1.303	1.437	1.909	2.382	-	-	-	-
P1	-	-	-	0.988	1.264	1.264	-	-	-	-	-	-	-
P2	2.05	2.56	2.76	2.76	3.54	4.49	4.88	5.12	6.06	6.06	6.69	6.69	6.69
R	1.97	1.97	1.97	2.36	2.36	2.36	3.54	3.54	4.92	4.92	6.30	6.30	6.30
R1	-	-	-	-	-	-	-	-	5.20	5.20	10.31	10.31	10.31
R2	-	-	-	-	-	-	-	-	-	-	-	-	-
S	2.05	2.56	2.76	2.76	3.54	4.49	4.88	5.59	11.02	11.02	11.42	11.42	11.42
S1	3.94	3.94	3.94	3.94	3.94	3.94	3.94	6.69	8.27	9.65	9.65	9.65	9.65
T	-	-	-	-	-	-	-	-	9.236	9.236	-	-	-
T1	3.150	3.150	3.150	3.150	3.150	3.150	3.150	5.118	5.118	5.118	5.118	5.118	5.118
U	-	-	-	-	-	-	-	-	3.827	3.827	-	-	-
U1	1.181	1.181	1.181	1.181	1.181	1.181	1.181	1.181	1.181	1.181	1.181	1.181	1.181
V	-	1.969	1.969	1.969	2.756	2.756	4.016	4.016	6.496	6.496	6.496	6.496	6.496
V1	1.969	2.756	2.756	2.756	4.016	4.016	4.921	5.512	-	-	-	-	10.000
W	-	1/4"	1/4"	1/4"	5/16"	5/16"	3/8"	3/8"	3/4"	3/4"	3/4"	3/4"	3/4"
W1	-	20x.39	20x.39	20x.39	18x.39	18x.39	16x.63	16x.63	10x1.14	10x1.14	10x1.14	10x1.14	10x1.14
W2	-	1/4"	5/16"	5/16"	3/8"	3/8"	1/2"	1/2"	5/8"	5/8"	5/8"	5/8"	5/8"
	-	20x.39	18x.39	18x.39	16x.63	16x.63	13x.79	11x.98	-	-	-	-	11x.98

For E12 dimensions see data sheet A 1.103.102



Note:

1. Flange and square drive to ISO 5211
2. Top and solenoid flange to VDE/VDI 3845 NAMUR
3. For P-series actuators with limit stops see A 1.501.01

VALVE AUTOMATION SYSTEMS

EL-O-MATIC
INTERNATIONAL

Nr.: A 1.103.106
All rights reserved

Date: Feb. '99

Subject to change without notice