

# Type **TK16 H<sub>2</sub> High-Flow**

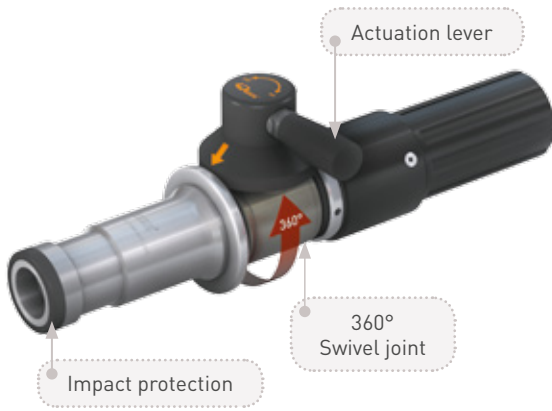
## WEH<sup>®</sup> H<sub>2</sub> Fuelling Nozzle

for buses and trucks at self-service fuelling stations



**General**

**DESCRIPTION**



**Features**

- Compatible with WEH® TN1 H<sub>2</sub> High-Flow receptacle profile
- WEH® EASY-TURN 360° swivel joint for actuation lever
- Easy operation
- Higher flow rate → shorter filling times
- Filling rate approx. 100 - 120 g/sec.
- Recirculation of the vented gas
- Plastic thermal protection
- WEH® Jaw locking mechanism
- High-grade materials
- Coding for pressure range / gas type

The WEH® TK16 H<sub>2</sub> High-Flow Fuelling Nozzle provides a faster hydrogen refuelling solution for buses and trucks. An increased flow rate achieves even faster filling times.

The actuation lever is located on the integrated swivel joint making it easy to rotate into the optimal actuating position. The actuation lever needs less effort to actuate the nozzle.

Internal coding for pressure range and gas type ensures that the TK16 H<sub>2</sub> High-Flow only fits the WEH® TN1 H<sub>2</sub> High-Flow Receptacle.

**Safety**

WEH® TK16 H<sub>2</sub> High-Flow offers optimum safety to the operator.

The fuelling nozzle remains connected to the receptacle until the gas between inlet valve and receptacle is depressurized.

**Application**

Fuelling nozzle for H<sub>2</sub> fast filling of buses and trucks at self-service fuelling stations.

		NOZZLE - pressure range/coding			
		250 bar	350 bar	350 bar HF*	700 bar
RECEPTACLE - pressure range/coding	250 bar	✓			
	350 bar	✓	✓		
	350 bar HF*	✓	✓	✓	
	700 bar	✓	✓		✓

\* HF = High-Flow

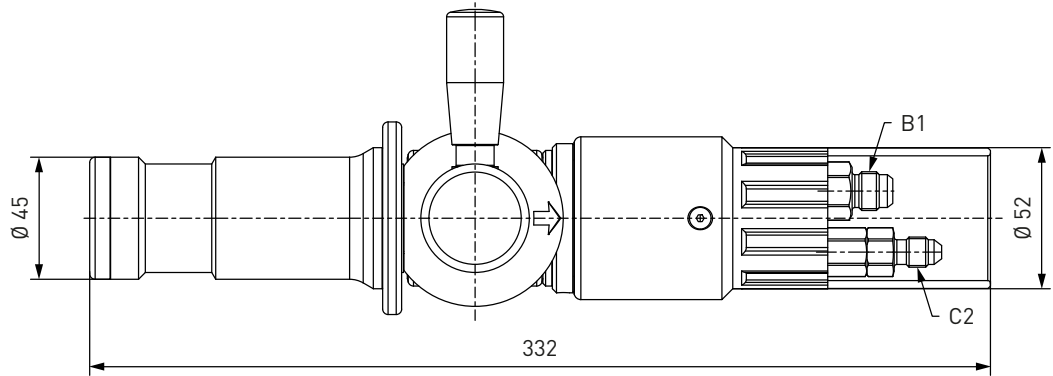
**TECHNICAL DATA**

Characteristic	Basic version	Options
Nominal bore DN	8 mm	On request
Pressure range	PN = 350 bar (5,000 psi)   PS = 450 bar   PT = 675 bar	
Temperature range	-40 °C up to +85 °C (-40 °F up to +185 °F)	On request
Material	Corrosion resistant	On request
Sealing material	Hydrogen compatible	On request
Design	With plastic thermal protection and gas recirculation	On request
Weight	Approx. 1.8 kg (3.97 lbs.)	
Registration	PED97/23EC: CE0036 SAE J2600:2002	

**Ordering / Accessories**

**ORDERING** | WEH® TK16 H<sub>2</sub> High-Flow Fuelling Nozzle

approx. dimensions (mm)



Part No.	Description	Pressure (PN)	Inlet B1 (external thread)	Gas recirculation C2 (external thread)
<b>C1-85042</b>	TK16 H <sub>2</sub> High-Flow	350 bar / 5,000 psi	UNF 9/16"-18*	UNF 7/16"-20*

\* acc. to SAE J514, 37°

Complete nozzle-hose-assemblies consisting of fuelling nozzle, hose set and breakaway coupling are available on request.

**ACCESSORIES**

The following accessories are available for the WEH® TK16 H<sub>2</sub> High-Flow Fuelling Nozzle:

**Filling and venting hoses**

Filling and venting hose for connecting fuelling nozzle and TSA1 H<sub>2</sub> breakaway coupling, complete with fittings and press-fittings supported by coil spring stubs.

Design: max. operating pressure PS: 450 bar (6,530 psi) / nominal bore DN: 6.35 mm



Part No.	Filling hose B1/B2 (internal thread)	Venting hose C1/C2 (internal thread)	Hose length
<b>C1-60917</b>	UNF 9/16"-18*	UNF 7/16"-20*	3 m
<b>C1-60920</b>	UNF 9/16"-18*	UNF 7/16"-20*	4 m
<b>C1-60923</b>	UNF 9/16"-18*	UNF 7/16"-20*	5 m

\* acc. to SAE JIC, 37°

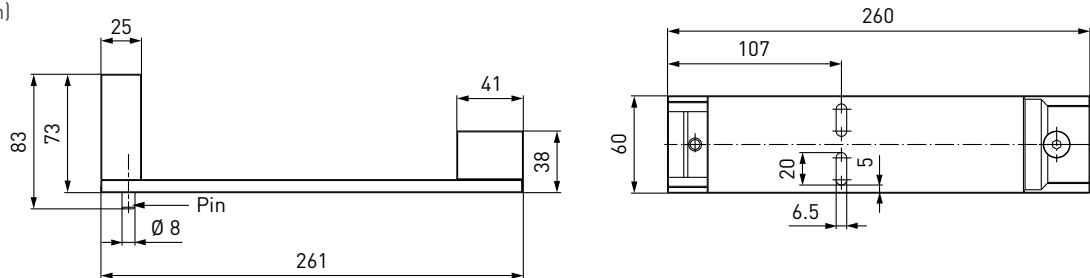
## Accessories

### Dispenser mounting

Mounting for safe attachment of the fuelling nozzle to the dispenser. Design: Aluminium, stainless steel

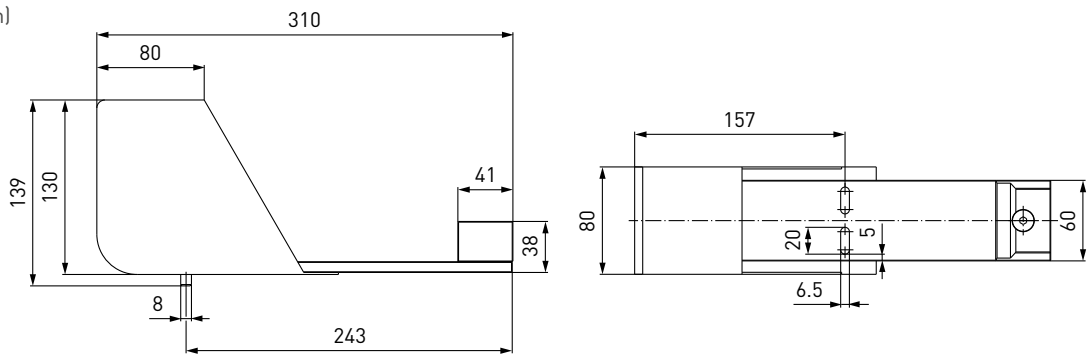
*Switch actuated (with pin) resp. not switch actuated mounting*

approx. dimensions (mm)



*Switch actuated mounting with weather protection*

approx. dimensions (mm)



Part No.	Description
<b>C1-86860</b>	Mounting (switch actuated)
<b>C1-109880</b>	Mounting (not switch actuated)
<b>C1-109678</b>	Mounting (switch actuated) with weather protection

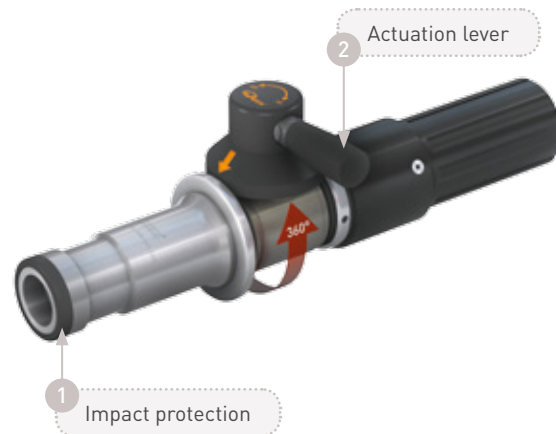
## Accessories

### Fittings

Stainless steel fittings for connecting port 'B1' to the filling hose resp. the port 'C2' to the venting hose are available on request.

### Spare parts

Various parts are available as spares for the TK16 H<sub>2</sub> High-Flow fuelling nozzle.



Part No.	Description
<b>E80-85045</b>	1 Impact protection
<b>W72504</b>	2 Actuation lever
<b>E99-44923</b>	Maintenance spray

## Other products

### OTHER PRODUCTS

You will find more products in our current catalogue no. 50



Further information on our homepage  
[www.weh.com](http://www.weh.com)

### » Contacting

For queries and further information, please do not hesitate to contact us.

*Manufacturer:*

**WEH GmbH Gas Technology**

Josef-Henle-Str. 1  
89257 Illertissen / Germany

Phone: +49 7303 95190-0

Fax: +49 7303 95190-9999

eMail: [h2sales@weh.com](mailto:h2sales@weh.com)

[www.weh.com](http://www.weh.com)