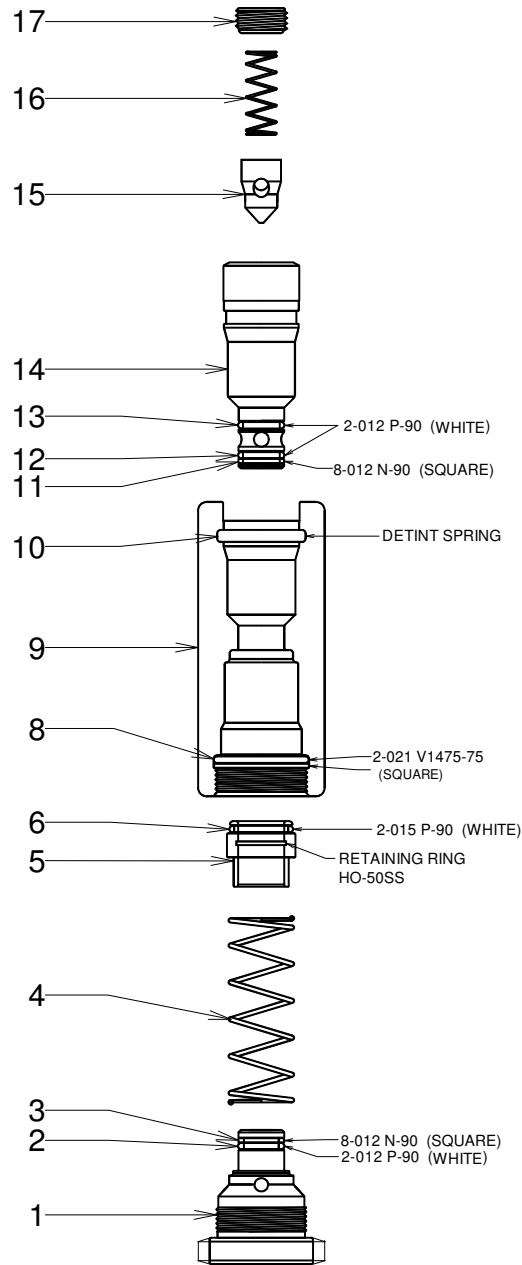



# FIELD ASSEMBLY INSTRUCTION FOR BREAKAWAY



1. INSTALL #2 O-RING (ROUND) ON TO THE #1 BOLT
2. INSTALL #3 O-RING (SQUARE) ON TO THE #1 BOLT
3. INSTALL #6 O-RING ON THE #5 SLIDE VALVE
4. INSTALL #6 O-RING (ROUND) IN THE #9 BODY
5. LUBRACATE THE O-RINGS WITH PARKER SUPER O LUBE
6. PUT 2 DROPS OF BLUE LOCKTIGHT ON THE THREADS OF THE #1 BOLT
7. HOLD #1 BOLT UP RIGHT AND PUT #4 SPRING
8. PUT THE #4 SPRING ON THE #1 BOLT AND #5 SLIDE VALVE ON THE SPRING
9. THREAD #9 BODY ON TO THE #1 BOLT
10. USE AN AIR NOZZLE AND FROM THE NOTCHED END OF #9 BODY REACH DOWN TO THE INSIDE CENTER OF #1 BOLT AND BLOW THE EXCES LOCKTIGHT OUT OF THE BLEED HOLE OF #9 BODY
11. PUT #15 POPET VALVE IN TO #14 PROBE
12. INSTALL THE #16 SPRING INTO THE PROBE
13. THREAD #17 SPRING CAP INTO # 14 PROBE TILL BOTTOMS OUT TORQUE LIGHTLY HAND TIGHT
14. INSTALL #12 O-RING (ROUND) ON TO THE PROBE
15. INSTALL #11 O-RING (SQUARE) ON THE PROBE
16. INSTALL #13 O-RING (WHITE & ROUND) ON THE PROBE
17. INSTALL #10 DETINT SPRING INTO THE #9 BODY
18. LUBRACATE THE O-RINGS ON THE PROBE #11, 12 & 13
19. INSTALL THE #14 PROBE INTO THE #9 BODY ABOUT 3/4 OF THE WAY UNTIL IT MEETS THE DETINT SPRING
20. ALIGN THE NOTCH ON THE #9 BODY WITH THE FLATS ON #14 PROBE AND WITH THE VICE GRIP TOOL OR IN A VICE, PRESS THE PROBE INTO BODY

## PARKER SUPER O-LUBE ONLY

### TGT-ILB-6 INLINE BREAK-AWAY

 <b>TGT</b> <small>TULSA GAS TECHNOLOGIES, INC.</small>	TULSA GAS TECHNOLOGIES, INC.	DATE: 5/22/07	REV. 3
	4809 SOUTH 101st EAST AVE.	DESIGNED BY: C. SEWELL	CHECKED BY:
	TULSA, OK 74146	DRAWN BY: C.R.S.	SCALE: NONE
	918-665-2641 FAX : 918-665-2657	DWG. NO. ILB6 EXPLODED VIEW.dcd	SHEET NO. OF