

V Series 3-Valve Manifolds

Materials of Construction

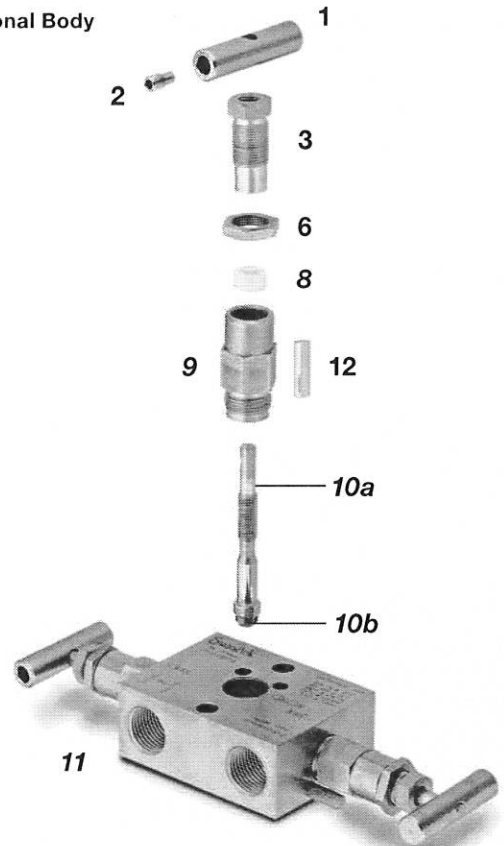
Materials for pressure-containing wetted parts are in compliance with ASME B31.1.

| Component | Material Grade/ ASTM Specification |
|--------------------------|---|
| 1 Handle ^① | 316 SS/A479 |
| 2 Set screw | |
| 3 Packing bolt | |
| 4 Packing nut | |
| 5 Upper gland | |
| 6 Jam nut | 316 SS/A276 |
| 7 Lower gland | 316 SS/A240 or A167 |
| 8 Packing | PTFE/D1710 |
| 9 Bonnet | 316 SS/A479 |
| 10a Stem | 316 SS/A276 |
| 10b Ball tip | 316 SS/A479 |
| 11 Body | |
| 12 Stop pin | 316 SS/A479 |
| Flange seals (not shown) | Fluorocarbon FKM |
| Flange bolts (not shown) | B8M CL.2B/A193 |
| Lubricants | Fluorinated base with PTFE and tungsten disulfide |
| | Hydrocarbon-based |

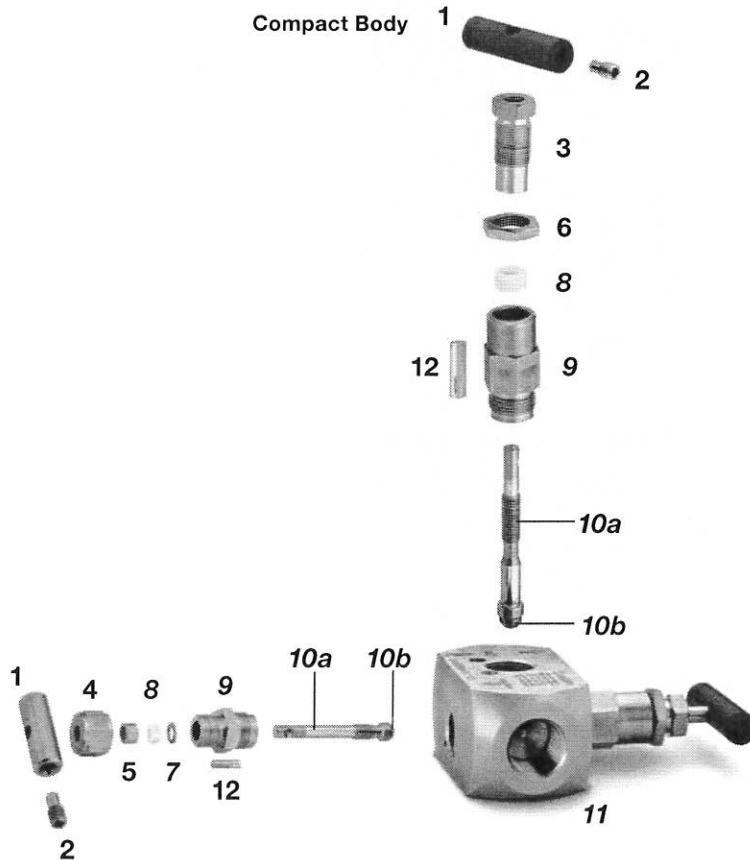
Wetted components listed in *italics*.

① Isolation valve handles of compact models are blue enamel coated.

Traditional Body



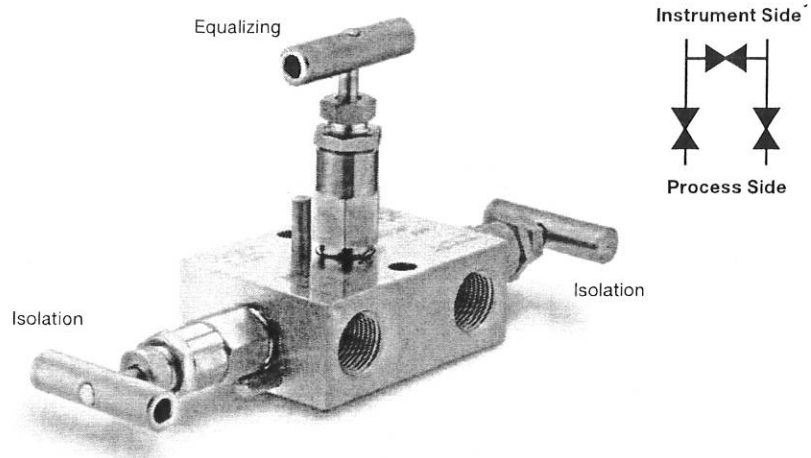
Compact Body



V Series 3-Valve Manifolds

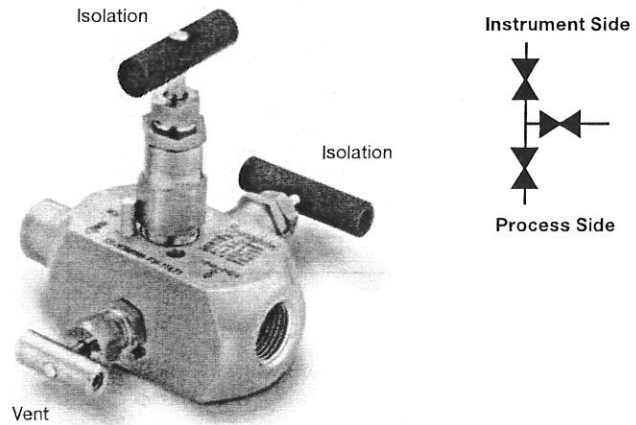
Traditional Body

- Designed for mounting on differential pressure transmitters with 2 1/8 in. (54 mm) center-to-center connections
- Consists of two isolation valves and one equalizing valve
- End connections—1/2 in. and 12 mm female Swagelok tube fitting, 1/2 in. female pipe (NPT), and flange (MSS)
- Instrument flange mount and remote mount



Compact Body

- Allows for block and bleed (or calibration) of a gauge or absolute pressure transmitter or gauge
- Consists of two isolation valves and one vent valve
- End connections—1/2 in. female pipe (NPT)
- Direct instrument mount and remote mount

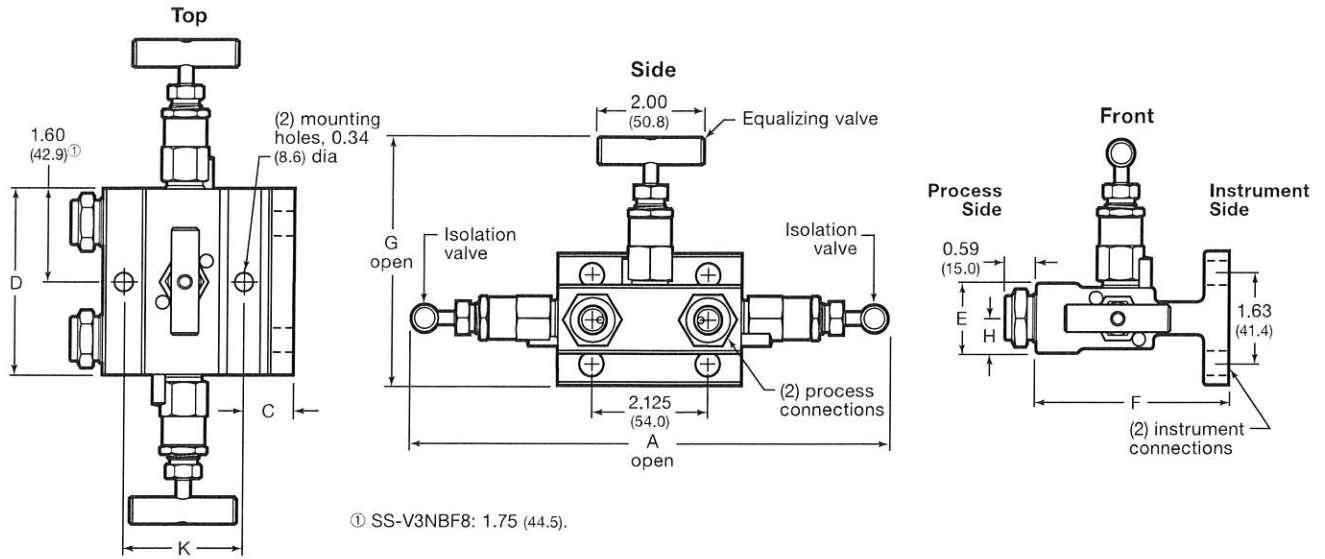


V Series 3-Valve Manifolds

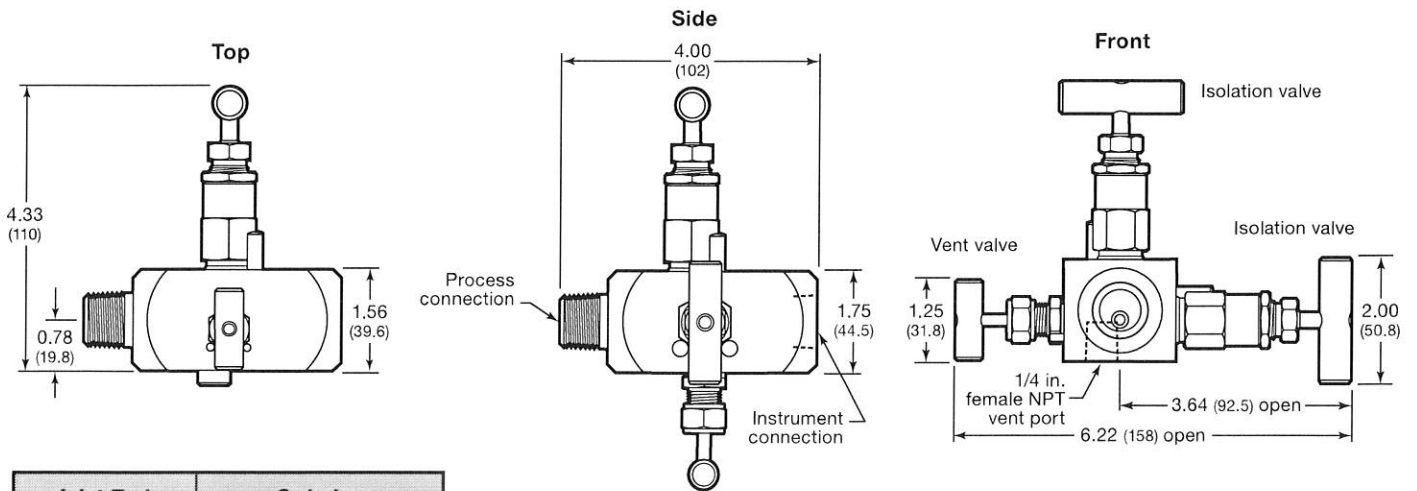
Ordering Information and Dimensions

Dimensions, in inches (millimeters), are for reference only and are subject to change.

Manifold with Female Swagelok Tube Fitting-To-Flange Connections



| End Connections | | Ordering Number | Dimensions, in. (mm) | | | | | | | |
|--------------------------------------|--------------|------------------|----------------------|----------------|----------------|----------------|----------------|---------------|----------------|----------------|
| Process | Instrument | | A | C | D | E | F | G | H | K |
| 1/2 in. female NPT | | SS-V3NBF8 | 9.03 (229) | 0.31 (7.9) | 3.50 (88.9) | 1.31 (33.3) | 2.50 (63.5) | 4.08 (104) | 0.66 (16.8) | 1.88 (47.8) |
| 1/2 in. female NPT | Flange (MSS) | SS-V3NBF8-FL | 8.91 (226) | 0.90 (22.9) | 3.38 (85.9) | 1.25 (31.8) | 3.48 (88.4) | 4.51 (115) | 0.63 (16.0) | 2.19 (55.6) |
| 1/2 in. female Swagelok tube fitting | | SS-V3NBFS8 | | 0.46 (11.7) | | 1.31 (33.3) | 3.04 (77.2) | 4.08 (104) | 0.66 (16.8) | 1.88 (47.8) |
| 1/2 in. female Swagelok tube fitting | Flange (MSS) | SS-V3NBFS8-FL | | 0.90 (22.9) | | 1.25 (31.8) | 3.48 (88.4) | 4.51 (115) | 0.63 (16.0) | 2.19 (55.6) |
| 12 mm female Swagelok tube fitting | | SS-V3NBFS12MM | | 0.46 (11.7) | | 1.31 (33.3) | 3.04 (77.2) | 4.08 (104) | 0.66 (16.8) | 1.88 (47.8) |
| 12 mm female Swagelok tube fitting | Flange (MSS) | SS-V3NBFS12MM-FL | | 0.90 (22.9) | | 1.25 (31.8) | 3.48 (88.4) | 4.51 (115) | 0.63 (16.0) | 2.19 (55.6) |
| Flange (MSS) | | SS-V3NBFL | | | | 2.40 (61.0) | 4.07 (103) | 4.55 (116) | 1.20 (30.5) | 1.88 (47.8) |



| Inlet End Connection | Ordering Number |
|----------------------|---------------------|
| 1/2 in. male NPT | SS-V3NBM8-F8-11421 |
| 3/4 in. male NPT | SS-V3NBM12-F8-11421 |