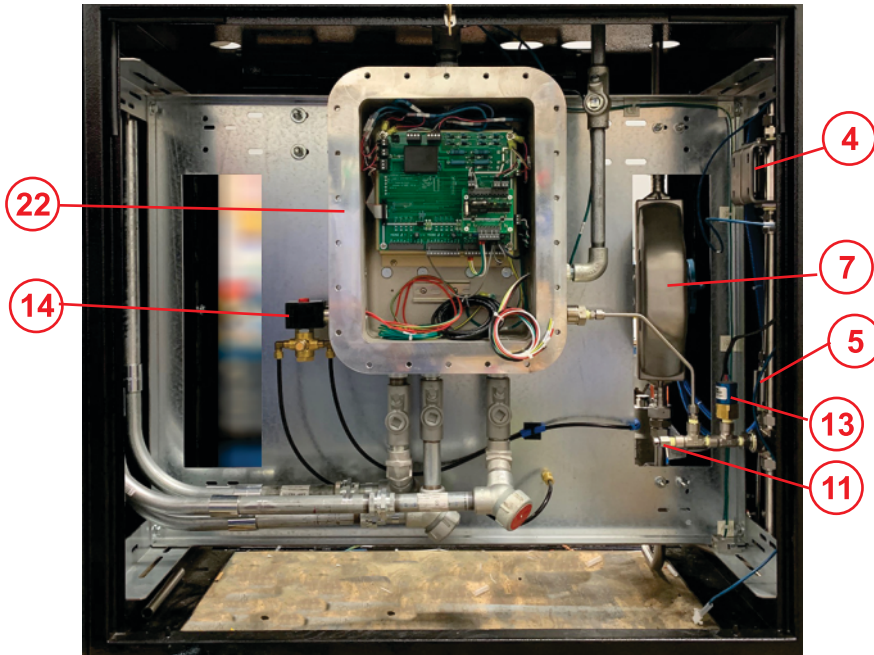
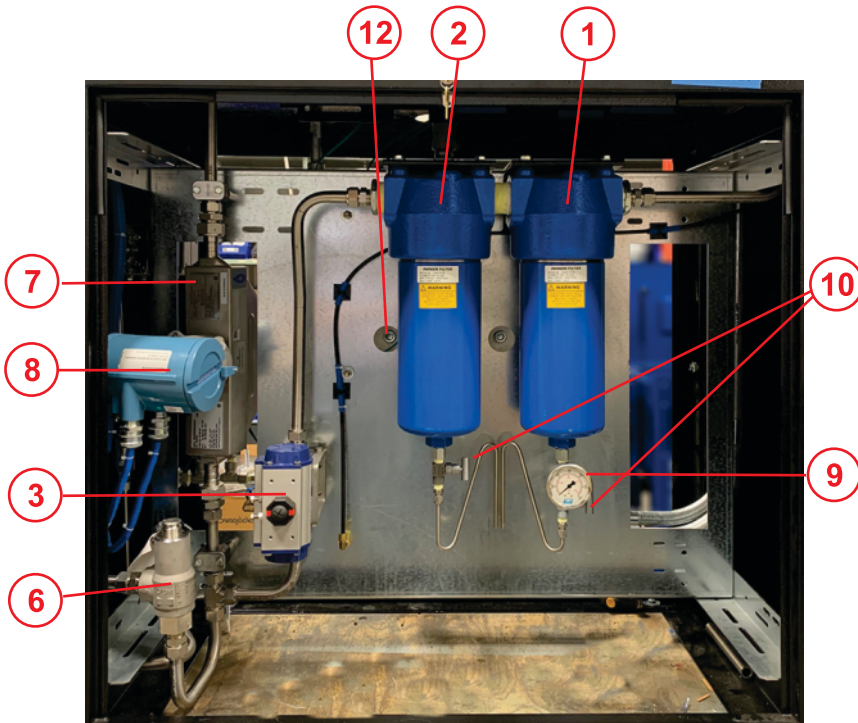


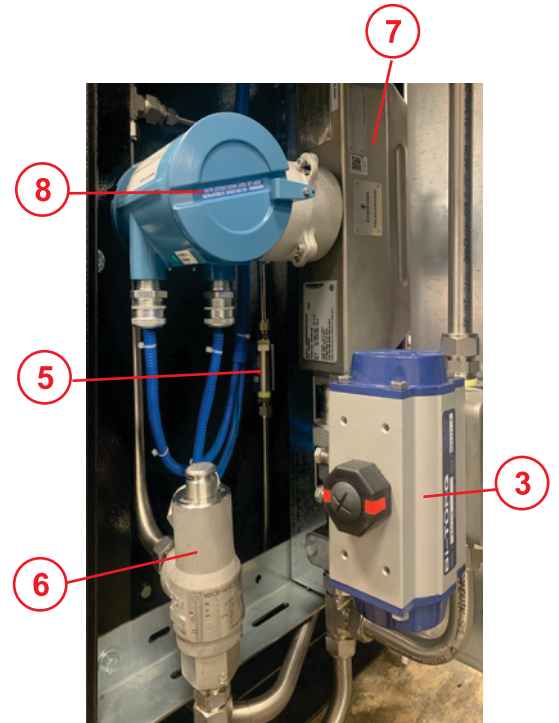
T7104-12CNG50 LOCATION DIAGRAM / MAINTENANCE BULLETIN



LOWER ENCLOSURE FRONT

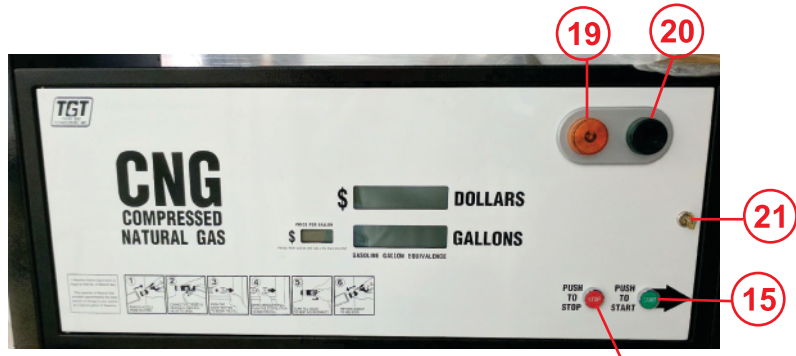


LOWER ENCLOSURE BACK

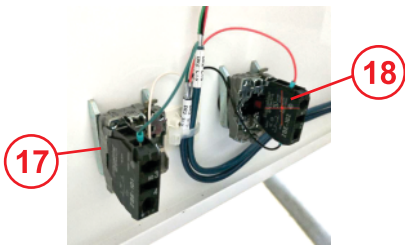


LOWER ENCLOSURE BACK LEFT

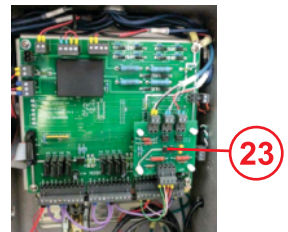
T7104-12CNG50 LOCATION DIAGRAM / MAINTENANCE BULLETIN



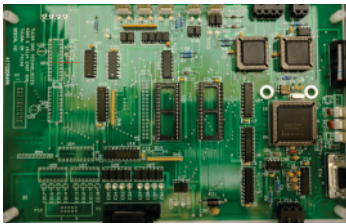
UPPER ENCLOSURE DOOR



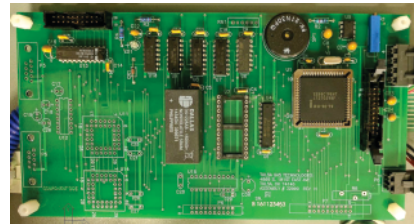
UPPER ENCLOSURE DOOR INTERIOR



CUSTOMER I/O BOARD



MAIN BOARD



MMI



GREY BOX DISPLAY



HOSE RETRACTOR

T7104-12CNG50 LOCATION DIAGRAM / MAINTENANCE BULLETIN

COMPONENTS				
Item	Qty	Description	Part Number	Manufacturer
1	1	Parker J6 Filter 10 Micron	JN6P10-CN	Parker
	1	Parker 10 Micron Element	10CJDK	Parker
2	1	Parker J6 Filter 4 Micron	JN6P4-CN	Parker
	1	Parker 4 Micron Element	4CJDK	Parker
3	1	3/4" Actuator	PN63SR	BI-Torq
4	2	3/4" Oasis Caged Ball Valve	BV7064N6LDDN	Oasis
5	-	3/8" Check Valve	CV2034NTSN	Oasis
6	1	Mercer 4500lb Relief Valve	14-22B112JX1	Mercer Valve
7	1	Flow Meter Micro Motion	CNG050S290NCAAEZZZ	Emerson
8	1	Transmitter	2700I13ABAEZWZ	Emerson
9	2	5000LB TGT Gauge	50230158	TGT
10	2	Needle valve	152-MFC	NoShok
11	1	Bleed Valve	4M-BV4SS	Parker
12	1	Pressure Transducer 6000lb.	PXT-K 6000	Murphy
13	1	Mechanical Pressure Switch	CD-1C-4500/WL293	Nason
14	1	Red hat Solenoid Valve	EF8320G18420/60110/50	Asco
15	1	Start Switch Electric XB4 Series	ZB4BA333	Schneider Elec.
16	1	Stop Switch Electric XB4 Series	ZB4BZ101	Schneider Elec.
17	1	Start Switch Contact Block	ZB4BA434	Schneider Elec.
18	1	Stop Switch Contact Block	ZB4BZ102	Schneider Elec.
19	1	Amber Standby Light	IA-S-55A	TGT
20	1	Green Standby Light	IA-S-55G	TGT
21	4	Lock Set	C8052C642A14A	Comp X Inter.
22	1	Explosion Proof Box		TGT
23	1	Gas Detector	1420280	Sensor Electronics
24	1	Standby Light Board	32013	TGT
	1	Customer I/O Board	32003	TGT
	1	Relay	RH1BUDC24V	IDEC
	1	Relay Socket Block	SH1B05C	IDEC

Maintenance Bulletin

1. Visual hose inspection, recommended weekly
2. Drain filter(s) at least monthly. The volume at each location will vary and filters should be drained according to need.
3. Leak check dispenser yearly. Additional leak checks should be performed after any service or repair to the dispenser.
4. Filter element replacement should take place yearly, or according to need based upon volume at each location.