

2- 3/4 hose ct 5000 0.03

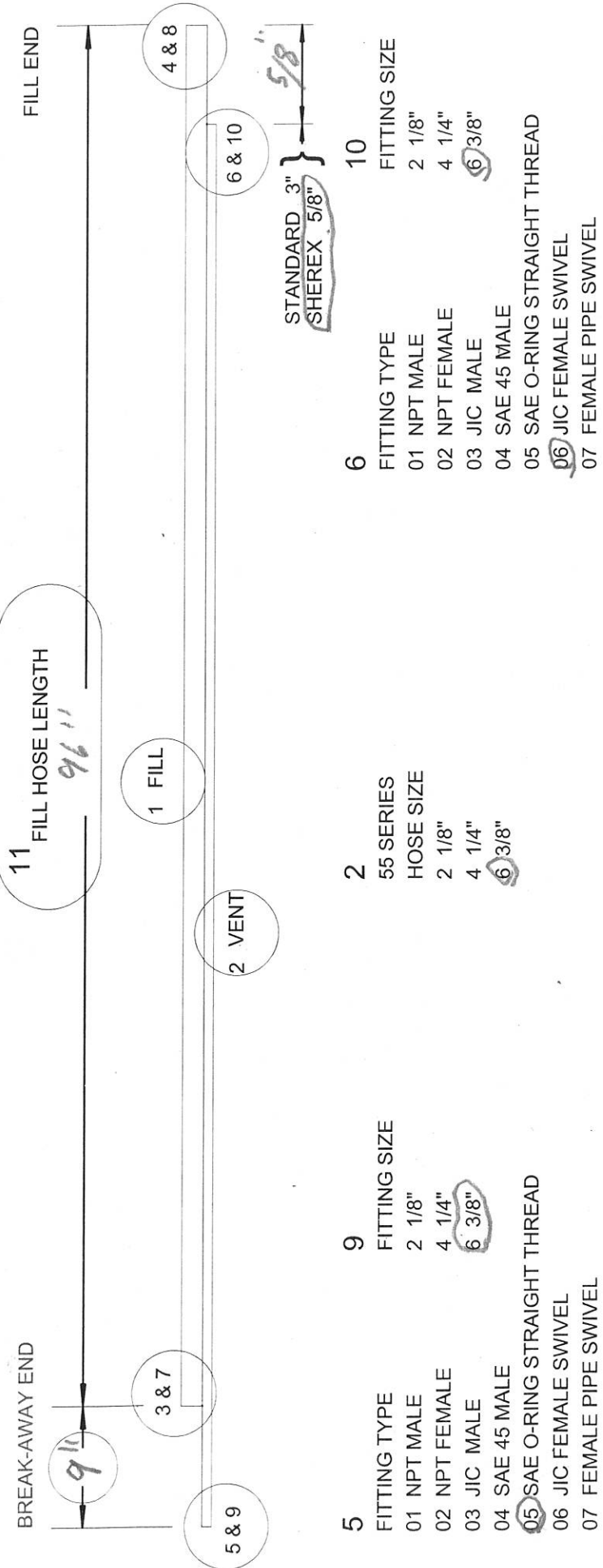
- 3 FITTING TYPE
- 01 NPT MALE
- 02 NPT FEMALE
- 03 JIC MALE
- 04 SAE 45 MALE
- 05 SAE O-RING STRAIGHT THREAD
- 06 JIC FEMALE SWIVEL
- 07 FEMALE PIPE SWIVEL

- 1 58 SERIES HOSE SIZE
- 4 1/4"
- 6 3/8"
- 8 1/2"
- 10 5/8"
- 12 3/4"

- 4 FITTING TYPE
- 01 NPT MALE
- 02 NPT FEMALE
- 03 JIC MALE
- 04 SAE 45 MALE
- 05 SAE O-RING STRAIGHT THREAD
- 06 JIC FEMALE SWIVEL
- 07 FEMALE PIPE SWIVEL

- 8 FITTING SIZE
- 4 1/4"
- 6 3/8"
- 8 1/2"
- 12 3/4"

cut 105"
96"



- 5 FITTING TYPE
- 01 NPT MALE
- 02 NPT FEMALE
- 03 JIC MALE
- 04 SAE 45 MALE
- 05 SAE O-RING STRAIGHT THREAD
- 06 JIC FEMALE SWIVEL
- 07 FEMALE PIPE SWIVEL

- 2 55 SERIES HOSE SIZE
- 2 1/8"
- 4 1/4"
- 6 3/8"

- 6 FITTING TYPE
- 01 NPT MALE
- 02 NPT FEMALE
- 03 JIC MALE
- 04 SAE 45 MALE
- 05 SAE O-RING STRAIGHT THREAD
- 06 JIC FEMALE SWIVEL
- 07 FEMALE PIPE SWIVEL

- 10 FITTING SIZE
- 2 1/8"
- 4 1/4"
- 6 3/8"

WORK ORDER # JWPC052322
 5CNG12/5CNG12-0606/0506-1212/61-105"

3/4 HOSE 2

- 3 FITTING TYPE
- 01 NPT MALE
- 02 NPT FEMALE
- 03 JIC MALE
- 04 SAE 45 MALE
- 05 SAE O-RING STRAIGHT THREAD
- 06 JIC FEMALE SWIVEL
- 07 FEMALE PIPE SWIVEL

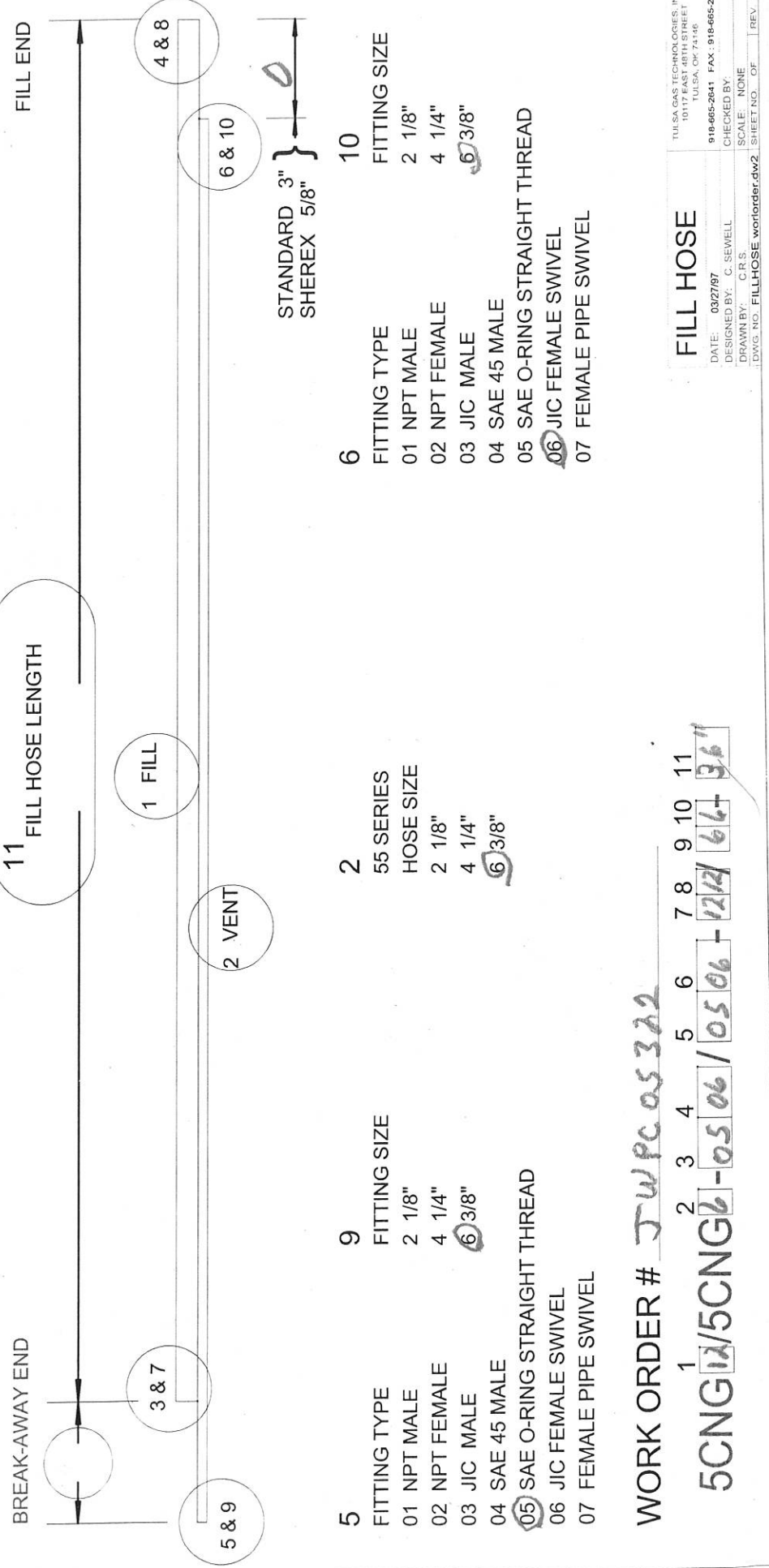
- 1 58 SERIES
- HOSE SIZE
- 4 1/4"
- 6 3/8"
- 8 1/2"
- 10 5/8"
- 12 3/4"

- 4 FITTING TYPE
- 01 NPT MALE
- 02 NPT FEMALE
- 03 JIC MALE
- 04 SAE 45 MALE
- 05 SAE O-RING STRAIGHT THREAD
- 06 JIC FEMALE SWIVEL
- 07 FEMALE PIPE SWIVEL

- 8 FITTING SIZE
- 4 1/4"
- 6 3/8"
- 8 1/2"
- 12 3/4"

36"

11 FILL HOSE LENGTH



- 5 FITTING TYPE
- 01 NPT MALE
- 02 NPT FEMALE
- 03 JIC MALE
- 04 SAE 45 MALE
- 05 SAE O-RING STRAIGHT THREAD
- 06 JIC FEMALE SWIVEL
- 07 FEMALE PIPE SWIVEL

- 2 55 SERIES
- HOSE SIZE
- 2 1/8"
- 4 1/4"
- 6 3/8"

- 6 FITTING TYPE
- 01 NPT MALE
- 02 NPT FEMALE
- 03 JIC MALE
- 04 SAE 45 MALE
- 05 SAE O-RING STRAIGHT THREAD
- 06 JIC FEMALE SWIVEL
- 07 FEMALE PIPE SWIVEL

- 10 FITTING SIZE
- 2 1/8"
- 4 1/4"
- 6 3/8"

STANDARD 3" SHEREX 5/8" } 0

WORK ORDER # JWPC 05322

1 2 3 4 5 6 7 8 9 10 11

5CNG 12/5CNG 6 - 05 06 / 05 06 - 12/12 66 - 36"

FILL HOSE

TULSA GAS TECHNOLOGIES, INC.
10117 EAST 48TH STREET
TULSA, OK 74146
918-665-2641 FAX: 918-665-2657
DATE: 03/27/97
DESIGNED BY: C. SEWELL
DRAWN BY: C.R.S.
SCALE: NONE
CHECKED BY:
DWG. NO. FILLHOSE_wororder.dwg SHEET NO. OF 1 REV. 1

- 3 FITTING TYPE FITTING SIZE
 01 NPT MALE 4 1/4"
 02 NPT FEMALE 6 3/8"
 03 JIC MALE 8 1/2"
 04 SAE 45 MALE 12 3/4"
 05 SAE O-RING STRAIGHT THREAD
 06 JIC FEMALE SWIVEL
 07 FEMALE PIPE SWIVEL

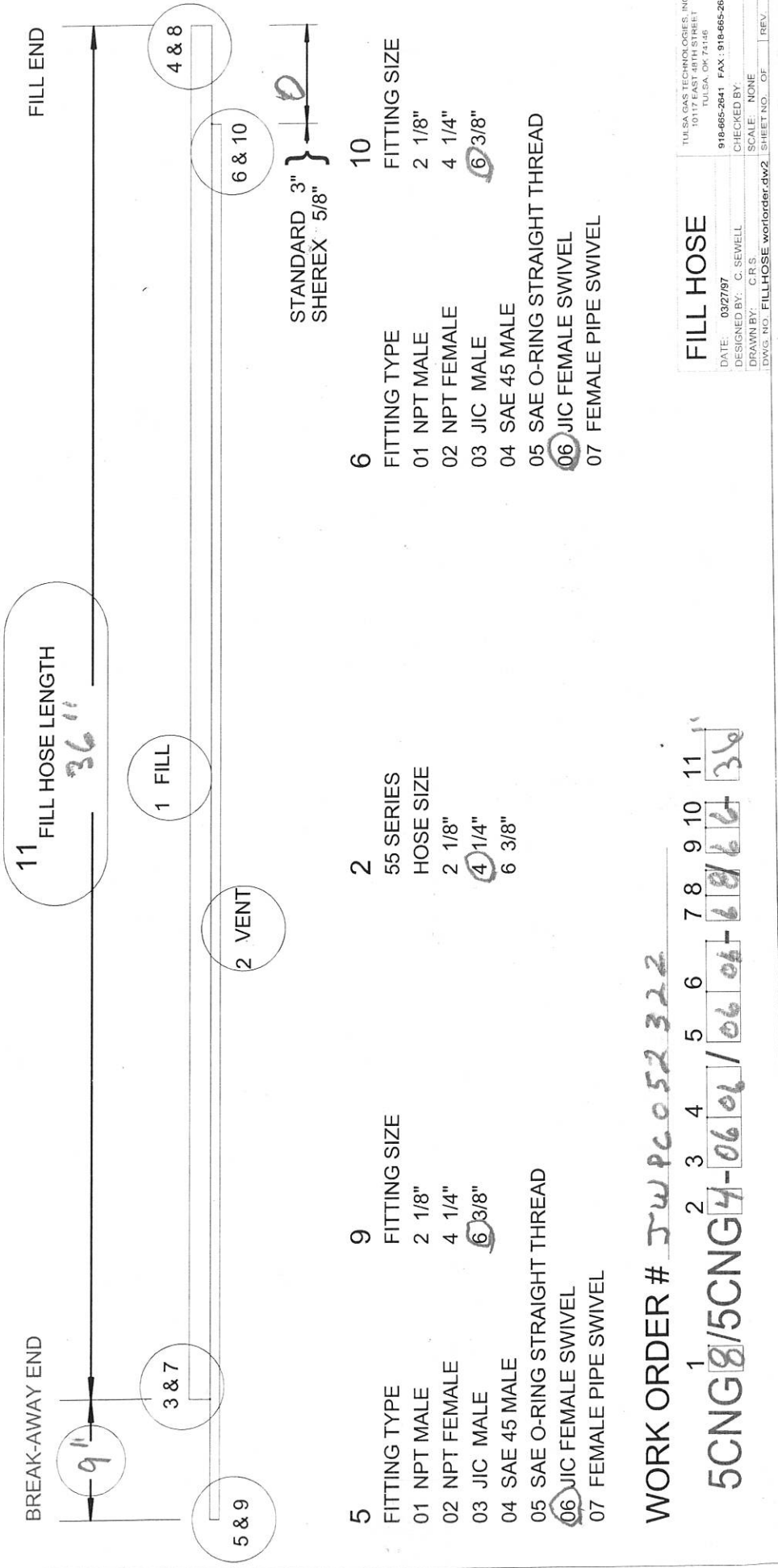
- 1 58 SERIES HOSE SIZE
 4 1/4"
 6 3/8"
 8 1/2"
 10 5/8"
 12 3/4"

- 4 FITTING TYPE FITTING SIZE
 01 NPT MALE 4 1/4"
 02 NPT FEMALE 6 3/8"
 03 JIC MALE 8 1/2"
 04 SAE 45 MALE 12 3/4"
 05 SAE O-RING STRAIGHT THREAD
 06 JIC FEMALE SWIVEL
 07 FEMALE PIPE SWIVEL

- 5 FITTING TYPE FITTING SIZE
 01 NPT MALE 2 1/8"
 02 NPT FEMALE 4 1/4"
 03 JIC MALE 6 3/8"
 04 SAE 45 MALE
 05 SAE O-RING STRAIGHT THREAD
 06 JIC FEMALE SWIVEL
 07 FEMALE PIPE SWIVEL

- 2 55 SERIES HOSE SIZE
 2 1/8"
 4 1/4"
 6 3/8"

- 6 FITTING TYPE FITTING SIZE
 01 NPT MALE 2 1/8"
 02 NPT FEMALE 4 1/4"
 03 JIC MALE 6 3/8"
 04 SAE 45 MALE
 05 SAE O-RING STRAIGHT THREAD
 06 JIC FEMALE SWIVEL
 07 FEMALE PIPE SWIVEL



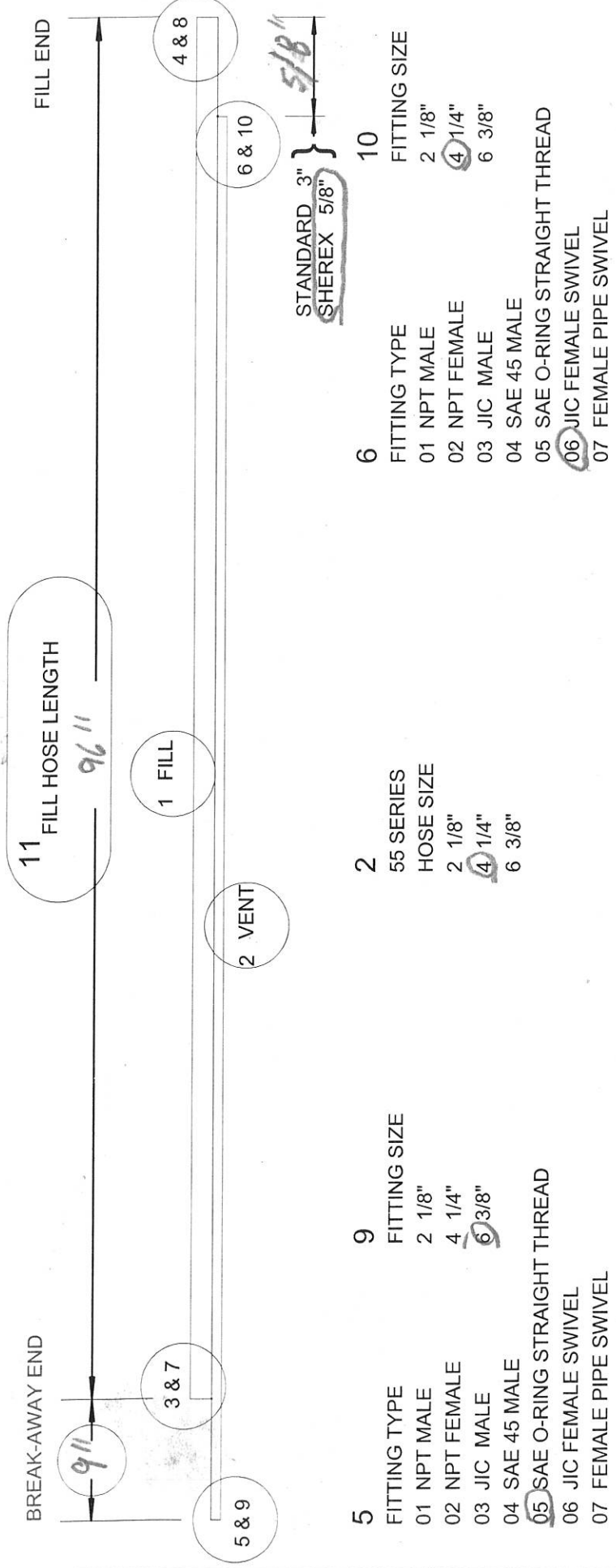
WORK ORDER # JWPC052322
 1 2 3 4 5 6 7 8 9 10 11
 5CNG8/5CNG4-0606/0606-18/66-36

2 1/2" Hose CT1000 0.04

- 3 FITTING TYPE FITTING SIZE
 01 NPT MALE 4 1/4"
 02 NPT FEMALE 6 3/8"
 03 JIC MALE 8 1/2"
 04 SAE 45 MALE 12 3/4"
 05 SAE O-RING STRAIGHT THREAD
 06 JIC FEMALE SWIVEL
 07 FEMALE PIPE SWIVEL

- 1 58 SERIES HOSE SIZE
 4 1/4"
 6 3/8"
 8 1/2"
 10 5/8"
 12 3/4"

- 4 FITTING TYPE FITTING SIZE
 01 NPT MALE 4 1/4"
 02 NPT FEMALE 6 3/8"
 03 JIC MALE 8 1/2"
 04 SAE 45 MALE 12 3/4"
 05 SAE O-RING STRAIGHT THREAD
 06 JIC FEMALE SWIVEL
 07 FEMALE PIPE SWIVEL



- 5 FITTING TYPE FITTING SIZE
 01 NPT MALE 2 1/8"
 02 NPT FEMALE 4 1/4"
 03 JIC MALE 6 3/8"
 04 SAE 45 MALE
 05 SAE O-RING STRAIGHT THREAD
 06 JIC FEMALE SWIVEL
 07 FEMALE PIPE SWIVEL

- 2 55 SERIES HOSE SIZE
 2 1/8"
 4 1/4"
 6 3/8"

- 6 FITTING TYPE FITTING SIZE
 01 NPT MALE 2 1/8"
 02 NPT FEMALE 4 1/4"
 03 JIC MALE 6 3/8"
 04 SAE 45 MALE
 05 SAE O-RING STRAIGHT THREAD
 06 JIC FEMALE SWIVEL
 07 FEMALE PIPE SWIVEL

WORK ORDER # JWPC052322

1 5CNG 8/5CNG 4-06 06 / 05 06 - 88 64 96

FILL HOSE

DATE: 03/27/97
 DESIGNED BY: C. SEWELL
 DRAWN BY: C.R.S.
 CHECKED BY:
 SCALE: NONE
 DWG. NO. FILLHOSE.worlorder.dwg. SHEET NO. OF REV. 1

TULSA GAS TECHNOLOGIES, INC.
 10117 EAST 48TH STREET
 TULSA, OK 74146
 918-665-2641 FAX: 918-665-2657