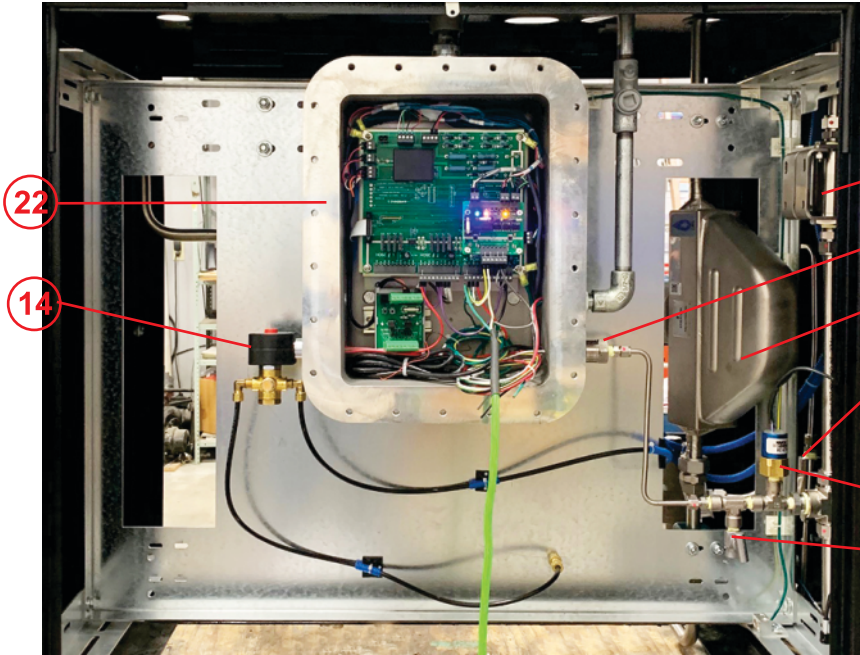


T7104-12CNG50 LOCATION DIAGRAM / MAINTENANCE BULLETIN



22

14

4

12

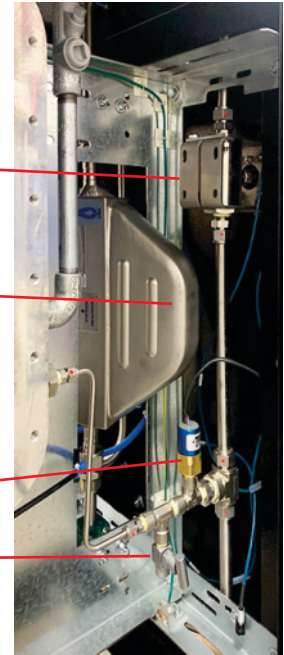
7

5

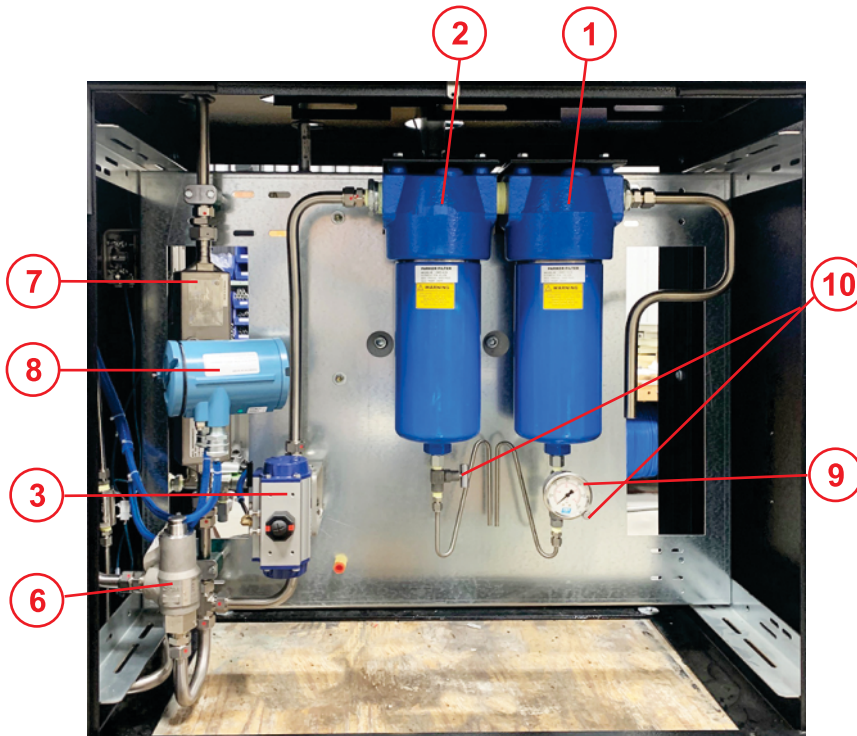
13

10

LOWER ENCLOSURE FRONT



FRONT RIGHT



2

1

7

8

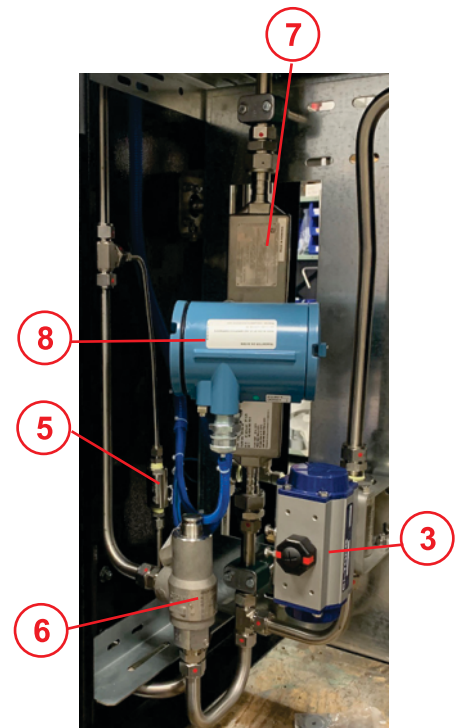
3

6

10

9

LOWER ENCLOSURE BACK



7

8

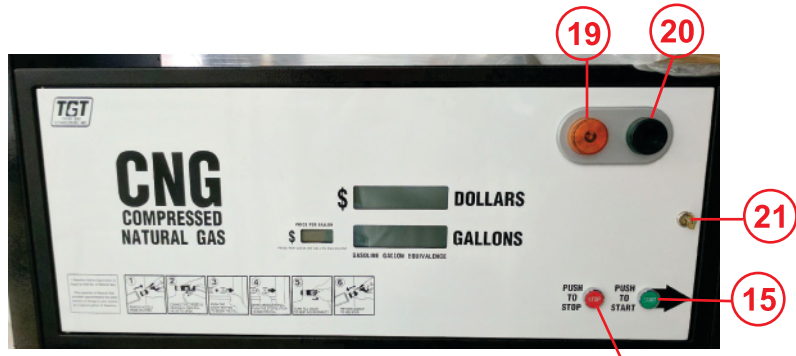
5

6

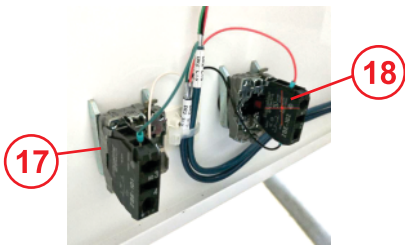
3

LOWER ENCLOSURE BACK LEFT

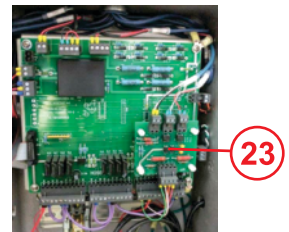
T7104-12CNG50 LOCATION DIAGRAM / MAINTENANCE BULLETIN



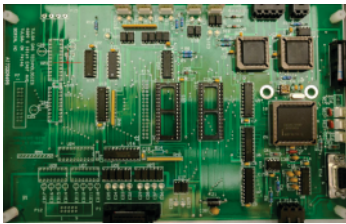
UPPER ENCLOSURE DOOR



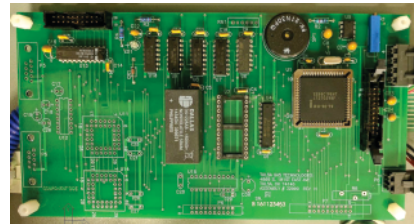
UPPER ENCLOSURE DOOR INTERIOR



CUSTOMER I/O BOARD



MAIN BOARD



MMI



GREY BOX DISPLAY



HOSE RETRACTOR

T7104-12CNG50 LOCATION DIAGRAM / MAINTENANCE BULLETIN

COMPONENTS

| Item | Qty | Description | Part Number | Manufacturer |
|-------------|------------|----------------------------------|-----------------------|---------------------|
| 1 | 1 | Parker J6 Filter 10 Micron | JN6P10-CN | Parker |
| | 1 | Parker 10 Micron Element | 10CJDK | Parker |
| 2 | 1 | Parker J6 Filter 4 Micron | JN6P4-CN | Parker |
| | 1 | Parker 4 Micron Element | 4CJDK | Parker |
| 3 | 1 | 3/4" Actuator | PN63SR | BI-Torq |
| 4 | 2 | 3/4" Oasis Caged Ball Valve | BV7064N6LDDN | Oasis |
| 5 | - | 3/8" Check Valve | CV2034NTSN | Oasis |
| 6 | 1 | Mercer 4500lb Relief Valve | 14-22B112JX1 | Mercer Valve |
| 7 | 1 | Flow Meter Micro Motion | CNG050S290NCAAEZZZ | Emerson |
| 8 | 1 | Transmitter | 2700I13ABAEZWZ | Emerson |
| 9 | 2 | 5000LB TGT Gauge | 50230158 | TGT |
| 10 | 2 | Needle valve | 152-MFC | NoShok |
| 11 | 1 | Bleed Valve | 4M-BV4SS | Parker |
| 12 | 1 | Pressure Transducer 6000lb. | PXT-K 6000 | Murphy |
| 13 | 1 | Mechanical Pressure Switch | CD-1C-4500/WL293 | Nason |
| 14 | 1 | Red hat Solenoid Valve | EF8320G18420/60110/50 | Asco |
| 15 | 1 | Start Switch Electric XB4 Series | ZB4BA333 | Schneider Elec. |
| 16 | 1 | Stop Switch Electric XB4 Series | ZB4BZ101 | Schneider Elec. |
| 17 | 1 | Start Switch Contact Block | ZB4BA434 | Schneider Elec. |
| 18 | 1 | Stop Switch Contact Block | ZB4BZ102 | Schneider Elec. |
| 19 | 1 | Amber Standby Light | IA-S-55A | TGT |
| 20 | 1 | Green Standby Light | IA-S-55G | TGT |
| 21 | 4 | Lock Set | C8052C642A14A | Comp X Inter. |
| 22 | 1 | Explosion Proof Box | | TGT |
| 23 | 1 | Gas Detector | 1420280 | Sensor Electronics |
| 24 | 1 | Standby Light Board | 32013 | TGT |
| | | | | |
| | | | | |
| | 1 | Customer I/O Board | 32003 | TGT |
| | 1 | Relay | RH1BUDC24V | IDEC |
| | 1 | Relay Socket Block | SH1B05C | IDEC |

Maintenance Bulletin

1. Visual hose inspection, recommended weekly
2. Drain filter(s) at least monthly. The volume at each location will vary and filters should be drained according to need.
3. Leak check dispenser yearly. Additional leak checks should be performed after any service or repair to the dispenser.
4. Filter element replacement should take place yearly, or according to need based upon volume at each location.