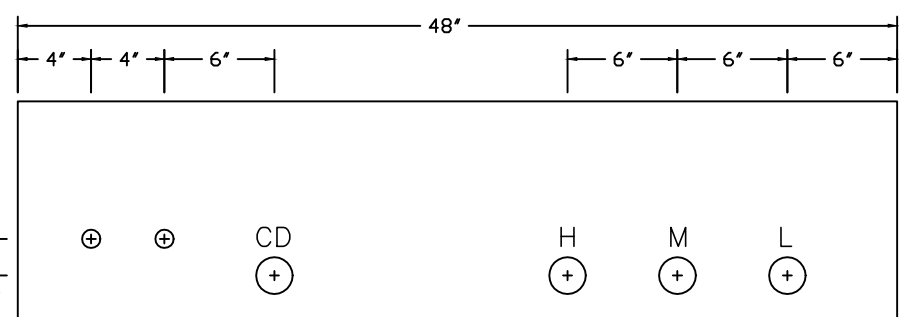


ITEM	QTY	PART #	DESCRIPTION	Cost
2	7	SS-400-1-4	1/4" Male connector	
7	2	SS-400-61	1/4" Bulkhead Union	
10	3	SS-400-2-4	1/4" Elbow	
12	3	Murphy Transducer	0-10,000 Transducer	
13	4	SS-4-T	1/4" Tee	
16	4	50230158	TGT Pressure Gauge. 6000# w\mount	
17	3	ASP-18V	1/8" Breather Caps	
20	4	4M-BV4-SS	Parker Bleeder 1/4"	
22	3	EF8201G034	120VAC Asco Redhat 3-way Valve	
24	3	BV704-4N6SDDN	1/2" Oasis Ball Valve	
28	4	5404-N-4-4x3	SS Long Nipple. 3"	
29	3	SS-400-2-2	1/4" x 1/8" Elbow	
30	6	1/4"-MMD-S	SS Tee	
31	6	4-4-FTX-S	1/4 NPT x 1/4 JIC Male	
32	6	4-4-F6X-S	1/4 NPT x 1/4 JIC Female	
34	6	Myers hub		
35	0	1/2" .065 SS	1/2" .065 SS tubing	
36	4	SS-810-61	1/2" Bulkead Union	
37	3	SS-810-1-8	1/2" Male Adaptor	
38	3	CV-204-ANDSN	1/2" Oasis Check Valve	
39	4	SS-810-3	1/2" Union Tee	
41	3	SS-8-TA-1-8	1/2" x 1/2" NPT Tube Adaptor	
42	3	BV704-4N6	1/2" Oasis Ball Valve w\ Bi-Torque actuator	
43	7	SS-810-3-8-4	1/2" x 1/4" Reducing Tee	
45	1	WA484812WF	Wiegmann Nema 12, 2 Door Enclosure	
46	1	N4-16128	Wiegmann Nema 4 Enclosure	
47	1	NPD4848	Wiegmann Panel	
48	1	NP1612	Wiegmann Panel	
54	8	8-8-FLO-SS	1/2" tube x 1/2" NPT Face Seal	
57	8	8-TPL-S	1/2" Par Flange Sleeve	
58	8	8-BL-SS	1/2" tube nut	
61	1	635L	Aqua Environmental Back Pressure Valve	
62	3	1/2FF	1/2" Hex Nipple	



LEGEND  
 DIRECT CONNECTION  
 .....

BOTTOM

MODEL:	DATE
SEQUENCE	04-01-21
PROGRAM:	
SERIAL NO.:	
WORK ORDER:	
MATERIAL:	
DRAWN BY: MB	
CHECKED BY: -	
APPROVED BY: -	
PART: -	
DWG. NO. KGS S. HUTCHINSON M3 PRIOR.	
PANEL	
815 SCOTT BLVD.	
	17 of 20

TULSA GAS TECHNOLOGIES, INC.  
 4809 South 101st East Avenue  
 Tulsa, OK 74146  
 918-665-2641  
 918-665-2657

