



PRODUCT CATALOGUE 2012

Oasis Engineering Ltd
129 Birch Avenue, Tauranga, New Zealand.
T: +64 7 928 3808 F: +64 7 928 3809
E: info@oasisengineering.co.nz
W: www.OasisNGV.com



Cutting Edge

Mankind's first precision engineers sought perfection in their production. They chose the finest materials and developed innovative tools and practices to carve out exceptional results. Their workmanship can still inspire us today.

Carving the most powerful tool of his time from a single flint, a prehistoric engineer knew that the true worth of an arrow is its CUTTING EDGE.

At Oasis, this timeless focus on exceptional results through first class engineering is represented in the Arrowhead of our logo.

Providing CUTTING EDGE solutions for over a quarter of a century, Oasis Products are specified worldwide. We have the skill and capability to develop any part you require to the exact dimensions. Designed and manufactured in New Zealand, to your specifications, for the world.

We invite you to discover the best in precision engineering and manufacturing, provided by our good looking and friendly staff.

Oasis Engineering Ltd.

Oasis Engineering is a precision engineering production facility. [ISO 9001:2008 certified](#), the systems and processes are in place to ensure our CNC machine centres are crafting the most accurate, highest quality components that will meet your specifications.

Oasis Engineering specialises in the manufacture of high pressure fluid control devices for the Natural Gas Vehicle industry (NGV). Oasis [ball valves](#) were the first to deliver gas at 3600 PSI. This innovation and focus on quality remains today with the continued development of lowest life cost products.



ACCREDITED QUALITY



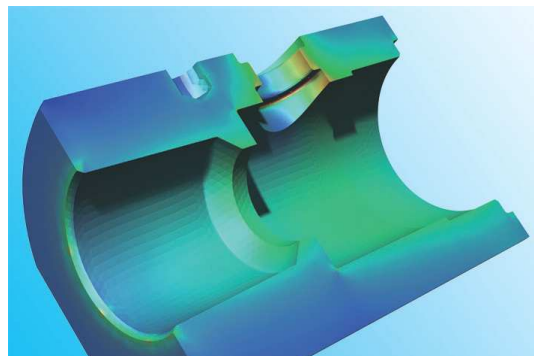
Oasis valves, couplings and swivels are internationally recognized as market leaders in high-pressure or sterile environments. The best machining tools, certified craftsmen, accredited quality manufacturing and people who value their trade, are what makes Oasis the quality component manufacturer of choice.

We only source the highest quality materials and can provide you with a certificate of product compliance and mill certificate. Our quality assurance systems and the equipment we use, also ensure you will receive the best design and LOWEST LIFE COST parts possible.

All our products are designed and crafted to provide durable, reliable service. We specialize in using high-end CNC machinery to make contaminant-free and polished surfaces.

Certified origin materials ensure all components are free of flaws, cracks or voids that could become bacterial traps.

All Oasis products can be customized to the dimensions you require, or check our website for a list of the standard sizes currently in production.



45 DEGREE FILL VALVE — 410 BAR — 6000 PSI — FV100 SERIES



Features & Specifications

- Full Flow
- 45 Degree Body Design
- Manufactured from Certified Aluminium & 304 Stainless Steel Bar Stock
- Inlet & Outlet Connections 1/2" SAE Female (3/4" UNF).
- Serviceable
- Ports adaptors available on requests
- Extended Cycle Testing to Ensure Longevity
- Precision CNC Machined
- Delrin Seats / Nitrile O-rings
- Certified to PED 97/23/EC
- Designed to ANSI AGA NGV1 Standard
- Part No. FV103-4-000-0

90 DEGREE FILL VALVE — 410 BAR — 6000 PSI — FV100 SERIES



Features & Specifications

- Full Flow
- 90 Degree Body Design
- Manufactured from Certified Aluminium & 304 Stainless Steel Bar Stock
- Inlet & Outlet Connections 1/2" SAE Female (3/4" UNF).
- Serviceable
- Ports adaptors available on requests
- Extended Cycle Testing to Ensure Longevity
- Precision CNC Machined
- Delrin Seats / Nitrile O-rings
- Certified to PED 97/23/EC
- Designed to ANSI AGA NGV1 Standard
- Part No. FV103-9-000-0

180 DEGREE FILL VALVE — 410 BAR — 6000 PSI — FV100 SERIES



Features & Specifications

- Full Flow
- 180 Degree Body Design
- Manufactured from Certified Aluminium & 304 Stainless Steel Bar Stock
- Inlet Connection 1/2" SAE Female (3/4" UNF).
- Serviceable
- Ports Adaptors Available on Requests
- Extended Cycle Testing to Ensure Longevity
- Precision CNC Machined
- Delrin Seats / Nitrile O-rings
- Certified to PED 97/23/EC
- Designed to ANSI AGA NGV1 Standard
- Part No. FV103-0-(3/8" SAE Male & 5/8" SAE Male Outlet Connections Upon Request).

FILL VALVE SERVICE KIT



Features & Specifications

- Complete Service Kit Available.
- Easy to Install
- Price Competitive
- Readily Available
- Pre-Assembled Stems
- Balls & Stems Manufactured from Certified 316 Stainless Steel Bar Stock
- Precision CNC Machined
- Delrin Seats
- Nitrile O-rings
- Service Instructions Supplied and Available Online

FILL VALVE HANDLE SERVICE KIT



Features & Specifications

- Complete Service Kit Available
- Easy to Install
- Stainless Steel Material

NGV1 NOZZLE P30 (3000PSI) — P36 (3600 PSI) — NC100 SERIES



Features & Specifications

- Manufactured from Certified 316 Stainless Steel Bar Stock
- Serviceable
- Extended Cycle Testing to Ensure Longevity
- Designed to ANSI AGA NGV1 Standards
- PED 97/23/AC Approved
- Class A tested to 100,000 + cycles
- Hardened Segment Connection Design Increases Gripping Surface Area & Reduces Wear in Receptors
- Inlet Adaptor Connections Available
- Part Nos.
 - NC103-P30
 - NC103-P36

NGV1 NOZZLE SERVICE KIT



Features & Specifications

- Complete Service Kit Available.
- Easy to Install
- Price Competitive
- Readily Available
- Pre-Assembled Poppet
- Precision CNC Machined
- Service Instructions Supplied and Available Online
- Part No. NC103-SK

BUS / TRUCK NOZZLE — NC100 SERIES — NC104-C200



Features & Specifications

- Manufactured from Certified 316 Stainless Steel Bar Stock
- Serviceable
- Extended Cycle Testing to Ensure Longevity
- Designed to ISO 14469-2 Standards
- PED 97/23/AC Approved
- Class A tested to 100,000 + cycles
- Couples to DN12 (C200) Receptors
- Hardened Segment Connection Design Increases Gripping Surface Area & Reduces Wear in Receptors
- Inlet Adaptor Connections Available
- Part No. NC104-C200

BUS / TRUCK NOZZLE SERVICE KIT — NC104-SK



Features & Specifications

- Complete Service Kit Available.
- Easy to Install
- Price Competitive
- Readily Available
- Pre-Assembled Poppet
- Precision CNC Machined
- Service Instructions Supplied and Available Online
- Part No. NC104-SK

45 DEGREE FILL VALVE WITH P30 (3000PSI) OR P36 (3600PSI) NGV1 NOZZLE



Features & Specifications

- 45 Degree Fill Valve Body Design with NGV1 P30/P36 Nozzle Assembled
- Designed to ANSI AGA NGV1
- PED 97/23/EC Approved
- Inlet Connection 1/2" SAE Female (3/4" UNF)
- Extended Cycle Testing to Ensure Longevity
- Port Adaptor Options Available Upon Request
- Hardened Segment Connection Nozzle Design Increases Gripping Surface Area & Reduces Wear in Receptors
- Part Nos.
 - FV103-4-000-A (FV with P30)
 - FV103-4-000-B (FV with P36)

90 DEGREE FILL VALVE WITH P30 (3000PSI) OR P36 (3600PSI) NGV1 NOZZLE



Features & Specifications

- 90 Degree Fill Valve Body Design with NGV1 P30/P36 Nozzle Assembled
- Designed to ANSI AGA NGV1
- PED 97/23/EC Approved
- Inlet Connection 1/2" SAE Female (3/4" UNF)
- Extended Cycle Testing to Ensure Longevity
- Port Adaptor Options Available Upon Request
- Hardened Segment Connection Nozzle Design Increases Gripping Surface Area & Reduces Wear in Receptors
- Part Nos.
 - FV103-9-000-A (FV with P30)
 - FV103-9-000-B (FV with P36)

180 DEGREE FILL VALVE WITH P30 (3000PSI) OR P36 (3600PSI) NGV1 NOZZLE



Features & Specifications

- 180 Degree Fill Valve Body Design with NGV1 P30/P36 Nozzle Assembled
- Designed to ANSI AGA NGV1
- PED 97/23/EC Approved
- Inlet Connection 1/2" SAE Female (3/4" UNF)
- Extended Cycle Testing to Ensure Longevity
- Port Adaptor Options Available Upon Request
- Hardened Segment Connection Nozzle Design Increases Gripping Surface Area & Reduces Wear in Receptors
- Part Nos.
 - FV103-0-AB6-A (FV with P30)
 - FV103-0-AB6-B (FV with P36)

45 DEGREE FILL VALVE WITH BUS/TRUCK NOZZLE — FV103-4-020-C



Features & Specifications

- 45 Degree Fill Valve Body Design with Bus/Truck Nozzle Assembled
- Fill Valve Designed to ANSI AGA NGV1
- Nozzle Designed to ISO14469-2 Standard
- Couples to DN12 (C200) Receptors
- PED 97/23/EC Approved
- Inlet Connection 1/2" SAE Female (3/4" UNF)
- Extended Cycle Testing to Ensure Longevity
- Port Adaptor Options Available Upon Request
- Hardened Segment Connection Nozzle Design Increases Gripping Surface Area & Reduces Wear in Receptors
- Part No. FV103-4-020-C

90 DEGREE FILL VALVE WITH BUS/TRUCK NOZZLE — FV103-9-020-C



Features & Specifications

- 90 Degree Fill Valve Body Design with Bus/Truck Nozzle Assembled
- Fill Valve Designed to ANSI AGA NGV1
- Nozzle Designed to ISO14469-2 Standard
- Couples to DN12 (C200) Receptors
- PED 97/23/EC Approved
- Inlet Connection 1/2" SAE Female (3/4" UNF)
- Extended Cycle Testing to Ensure Longevity
- Port Adaptor Options Available Upon Request
- Hardened Segment Connection Nozzle Design Increases Gripping Surface Area & Reduces Wear in Receptors
- Part No. FV103-9-020-C

180 DEGREE FILL VALVE WITH BUS/TRUCK NOZZLE — FV103-0-AC6-C



Features & Specifications

- 180 Degree Fill Valve Body Design with Bus/Truck Nozzle Assembled
- Fill Valve Designed to ANSI AGA NGV1
- Nozzle Designed to ISO14469-2 Standard
- Couples to DN12 (C200) Receptors
- PED 97/23/EC Approved
- Inlet Connection 1/2" SAE Female (3/4" UNF)
- Extended Cycle Testing to Ensure Longevity
- Port Adaptor Options Available Upon Request
- Hardened Segment Connection Nozzle Design Increases Gripping Surface Area & Reduces Wear in Receptors
- Part No. FV103-0-AC6-C

BREAKAWAY COUPLER AND BREAKAWAY WITH VENT COUPLER — BC 100 SERIES



Features & Specifications

- High Flow Design
- 1/2" NPT Female to 1/2" NPT Female Connections
- Hardened Segments Connection Design Increases Gripping Surface Area
- Easily Serviced
- Service Kit Readily Available
- Spring Loaded Poppet in Both Sides
- Service Kit Available
- Precision CNC Machined
- Manufactured from Certified 304 Stainless Steel Bar Stock
- Supplied with Assembly Tool
- Designed to ANSI-NGV 4.4
- Part Nos.
 - BC104-4NTBN (Breakaway)
 - BC104-4NTBN-2 (Breakaway with Vent)

HIGH PRESSURE QUICK RELEASE COUPLER — HC200 SERIES



Features & Specifications

- High Flow Design
- Available in 3/4" & 1" Sizes
- Manufactured from Certified 316 Stainless Steel Bar Stock
- Serviceable
- Designed to ISO7241-1 Series B Profile
- Tested to ISO7241-2
- Extended Cycle Testing to Ensure Longevity
- Hardened Segment Connection Design Increases Gripping Surface Area & Reduces Wear in Receptors
- Part Nos.
 - HC206-6NCSN (3/4" NPT Threads)
 - HC208-6NCSN (1" NPT Threads)

HIGH PRESSURE QUICK RELEASE COUPLER SERVICE KIT



Features & Specifications

- Complete Service Kit Available
- Easy to Install
- Price Competitive
- Readily Available
- Pre-Assembled Poppet
- Male & Female Parts Service Kit Available
- Precision CNC Machined
- Service Instructions Supplied and Available Online

BALL VALVES — 34 TO 410 BAR — 500 TO 6000 PSI — BV700 SERIES



Features & Specifications

- Full Flow Design
- Anti-Blowout Stem Design
- Two Piece Valve
- NPT Female/Female Standard Thread Connections. Other Threads Available
- ISO 15500 Compliant
- API STD 607 Approved
- PED 97/23/EC Approved
- Sizes Available from 1/4" to 1 1/2"
- Precision CNC Machined
- Easily Serviced
- Service Kits Readily Available
- Extended Cycle Testing to Ensure Longevity
- Delrin Seats (Peek Available)
- Nitrile O-rings (Viton Available)
- Manufactured from Certified 304 Stainless Steel Bar Stock. SS316 also Available

BALL VALVE SERVICE KITS — DELRIN/NITRILE



Features & Specifications

- Complete Service Kit Available
- Easy to Install
- Pre-assembled Stem
- Ball & Stem Manufactured from Certified 316 Stainless Steel Bar Stock
- Precision CNC Machined
- Delrin Seats
- Nitrile O-rings
- Service Instructions Supplied and Available Online
- Working Temperatures: -40 - 120° C

BALL VALVE SERVICE KITS — PEEK/VITON



Features & Specifications

- Complete Service Kit Available
- Easy to Install
- Pre-assembled Stem
- Ball & Stem Manufactured from Certified 316 Stainless Steel Bar Stock
- Precision CNC Machined
- Peek Seats
- Viton O-rings
- Service Instructions Supplied and Available Online
- Working Temperatures: -28 - 200° C

BALL VALVES — 0.48 TO 410 BAR — 7 TO 6000 PSI — BV700 SERIES



Features & Specifications

- Full Flow Design
- Anti-Blowout Stem Design
- Two Piece Valve
- NPT Female/Female Standard Thread Connections. Other Threads Available
- ISO 15500 Compliant
- API STD 607 Approved
- PED 97/23/EC Approved
- Sizes Available: 1/2" & 3/4"
- Precision CNC Machined
- Easily Serviced
- Service Kits Readily Available
- Extended Cycle Testing to Ensure Longevity
- Delrin Seats (Peek also Available)
- Nitrile O-rings (Viton Available)
- Manufactured from Certified 304 Stainless Steel Bar Stock. SS316 also Available

BALL VALVE SERVICE KITS — DELRIN/NITRILE — 0.48 TO 410 BAR — 7 TO 6000 PSI



Features & Specifications

- Complete Service Kit Available
- Easy to Install
- Pre-assembled Stem
- Ball & Stem Manufactured from Certified 316 Stainless Steel Bar Stock
- Precision CNC Machined
- Delrin Seats
- Nitrile O-rings
- Service Instructions Supplied and Available Online
- Working Temperatures: -40 - 120° C

BALL VALVES WITH TUBE LOCK END — 34 TO 410 BAR — 500 TO 6000 PSI — BV700 SERIES



Features & Specifications

- Full Flow Design
- Anti-Blowout Stem Design
- Two Piece Valve
- Supplied With/Without Ferrule Fittings
- Easily Serviced
- Service Kits Readily Available
- Manufactured from Certified 304 Stainless Steel Bar Stock. SS316 also Available
- Precision CNC Machined
- Extended Cycle Testing to Ensure Longevity
- Delrin Seats (Peek also Available)
- Nitrile O-rings (Viton also Available)
- ISO 15500 Compliant
- API STD 607 Approved
- PED 97/23/EC Approved

BALL VALVE WITH ACTUATOR MOUNTING KIT — BV700 SERIES



Features & Specifications

- Supplied Assembled Including Ball Valve, Bracket, Drive Dog and Bolts to Fit Actuator
- High Precision Stainless Steel Laser Cut Bracket
- PED 97/23/EC Approved
- API STD 607 Approved
- ISO 15500 Compliant
- Designed for Air Torque & Rotex Actuators
- Extended Cycle Testing to Ensure Longevity
- Bolts Pattern to ISO 5211
- Ball Valve as per Valve Specifications
- Sizes Available from 1/4" to 1 1/2"

BALL VALVE WITH ROTEX ACTUATOR — BV700 SERIES



Features & Specifications

- Supplied Assembled Including Ball Valve, Drive Dog and Rotex Actuator
- Spring Return Pneumatic Actuator
- High Precision Stainless Steel Laser Cut Bracket
- Extended Cycle Testing to Ensure Longevity
- Fail Close Standard Configuration
- Sizes Available from 1/4" to 1 1/2"

BALL VALVE WITH AIRTORQUE ACTUATOR — BV700 SERIES



Features & Specifications

- Supplied Assembled Including Ball Valve, Drive Dog and Air Torque Actuator
- Spring Return Pneumatic Actuator
- High Precision Stainless Steel Laser Cut Bracket
- Extended Cycle Testing to Ensure Longevity
- Fail Close Standard Configuration
- Sizes Available from 1/4" to 1 1/2"

MANIFOLD BALL VALVE WITH ACTUATOR MOUNTING KIT – MV100 SERIES



Features & Specifications

- Design for Manifold Applications
- Bolt-on Design to Fit on to Manifold
- Anti-Blowout Stem Design
- Two Piece Valve
- Supplied Assembled Including Valve, Bracket, Drive Dog and Bolts to Fit Actuator
- High Precision Stainless Steel Laser Cut Bracket
- Easily Serviced
- Extended Cycle Testing to Ensure Longevity
- Precision CNC Machined
- Designed for Air Torque & Rotex Actuators
- Bolts Pattern to ISO 5211
- Sizes: 3/8" & 1/2"

MANIFOLD BALL VALVE WITH ROTEX ACTUATOR – MV100 SERIES



Features & Specifications

- Supplied Assembled Including Valve, Drive Dog and Rotex Actuator
- Spring Return Pneumatic Actuator
- High Precision Stainless Steel Laser Cut Bracket
- Fail Close Standard Configuration
- Extended Cycle Testing to Ensure Longevity
- Manifold Ball Valve as per Valve Specifications
- Sizes: 3/8" & 1/2"

MANIFOLD BALL VALVE WITH AIRTORQUE ACTUATOR – MV100 SERIES



Features & Specifications

- Supplied Assembled Including Valve, Drive Dog and Air Torque Actuator
- Spring Return Pneumatic Actuator
- High Precision Stainless Steel Laser Cut Bracket
- Fail Close Standard Configuration
- Extended Cycle Testing to Ensure Longevity
- Manifold Ball Valve as per Valve Specifications
- Sizes: 3/8" & 1/2"

SANDWICH BALL VALVE — 34 TO 410 BAR — 7 TO 6000 PSI — SV100 SERIES

Features & Specifications



- Design for Manifold Applications
- Anti-Blowout Stem Design
- Minimize Service Down Time
- Two Piece Valve
- Easily Serviced
- Service Kits Readily Available
- Extended Cycle Testing to Ensure Longevity
- Precision CNC Machined
- Manufactured from Certified 304 Stainless Steel Bar Stock. SS316 also Available
- End Cap Connection Options Available Upon Request
- Delrin Seats (Peek Available)
- Nitrile O-rings (Viton Available)
- Sizes Available from 3/8" to 1"

SANDWICH BALL VALVE WITH ACTUATOR MOUNTING KIT — SV100 SERIES

Features & Specifications



- Design for Manifold Applications
- Anti-Blowout Stem Design
- Two Piece Valve
- Supplied Assembled Including Valve, Bracket, Drive Dog and Bolts to Fit Actuator
- High Precision Stainless Steel Laser Cut Bracket
- Easily Serviced
- Extended Cycle Testing to Ensure Longevity
- Precision CNC Machined
- Designed for Air Torque & Rotex Actuators
- End Cap Connection Options Available Upon Request
- Bolts Pattern to ISO 5211
- Sizes Available from 3/8" to 1"

SANDWICH BALL VALVE SERVICE KIT

Features & Specifications



- Complete Service Kit Available
- Easy to Install
- Pre-assembled Stem
- Ball & Stem Manufactured from Certified 316 Stainless Steel Bar Stock
- Precision CNC Machined
- Delrin Seats
- Nitrile O-rings
- Service Instructions Supplied and Available Online
- Working Temperatures: -40 - 120° C

SANDWICH BALL VALVE WITH ROTEX ACTUATOR — SV100 SERIES



Features & Specifications

- Supplied Assembled Including Valve, Drive Dog and Rotex Actuator
- Spring Return Pneumatic Actuator
- High Precision Stainless Steel Laser Cut Bracket
- Fail Close Standard Configuration
- Extended Cycle Testing to Ensure Longevity
- Sandwich Ball Valve as per Valve Specifications
- Sizes Available from 3/8" to 1"

SANDWICH BALL VALVE WITH AIRTORQUE ACTUATOR — SV100 SERIES



Features & Specifications

- Supplied Assembled Including Valve, Drive Dog and Air Torque Actuator
- Spring Return Pneumatic Actuator
- High Precision Stainless Steel Laser Cut Bracket
- Fail Close Standard Configuration
- Extended Cycle Testing to Ensure Longevity
- Sandwich Ball Valve as per Valve Specifications
- Sizes Available from 3/8" to 1"

SANDWICH BALL VALVE END CAPS OPTIONS



Features & Specifications

- Fully Customisable to Suit Customer Connection Requirements
- Male Thread Ends, Female Thread Ends, Socket Weld Ends, Butt Weld Ends and Tube Lock Ends Available
- Manufactured from Certified 304 Stainless Steel Bar Stock (Stainless Steel 316 also Available)

ONE PIECE CHECK VALVES — MAX PRESSURE: 410 BAR / 6000 PSI — CV100 SERIES



Features & Specifications

- Ideal for High Pressure Gas Applications
- High Duty Applications
- Simple Robust Design
- Precision CNC Machined
- Manufactured from Certified 303 Stainless Steel Bar Stock
- NPT Female/Female Thread Connections. Other Threads Available
- Size: 1/4"

CHECK VALVES — MAX PRESSURE: 410 BAR / 6000 PSI — CV200 SERIES



Features & Specifications

- High Flow Designed
- Easily Serviced
- Manufactured from Certified 304 Stainless Steel Bar Stock (SS316 also Available)
- Precision CNC Machined
- NPT Female/Female Thread Connections. Other Threads Available
- Service Kits Readily Available
- Sizes Available from 3/8" to 1 1/2"

CHECK VALVE SERVICE KITS



Features & Specifications

- Poppet Pre-Assembled with PTFE & O-ring
- Easy to Install
- Poppet Manufactured from Certified 316 Stainless Steel Bar Stock
- Precision CNC Machined
- Service Instructions Supplied & Available Online

HP QUICK RELEASE COUPLER — MAX PRESSURE: 410 BAR / 6000 PSI — HC100 SERIES



Features & Specifications

- High Flow Design
- NPT Female/Female Thread Connections. Other Threads Available
- Hardened Segment Connection Design Increases Gripping Surface Area
- Easily Serviced
- Service Kits Readily Available
- Precision CNC Machined
- Manufactured from Certified 304 Stainless Steel Bar Stock (SS316 also Available)

HIGH PRESSURE QUICK RELEASE SERVICE KIT



Features & Specifications

- Poppet Pre-Assembled with PTFE & O-ring
- PTFE Seals
- Nitrile O-rings
- Easy to Install
- Poppet Manufactured from Certified 316 Stainless Steel Bar Stock
- Precision CNC Machined
- Service Instructions Supplied & Available Online

ELECTRICAL ISOLATING COUPLER — MAX PRESSURE: 410 BAR / 6000 PSI — EC100 SERIES



Features & Specifications

- Full Flow Design
- Isolates a Section of Pipe to Allow the Safe Dissipation of Static Electricity Created by High Pressure Flow
- Reduces Pipe Corrosion
- Standard Product is NPT Male/NPT Female Connections. Other Threads also Available.
- Easily Serviced
- Service Kit Readily Available
- Precision CNC Machined
- Manufactured from Certified 304 Stainless Steel (SS316 Available)
- Sizes Available from 1/2" to 1"

NON RETURN VALVES — SNV300 SERIES



Features & Specifications

- Designed for Sanitary Food Handling Applications
- High Duty Applications
- Tube Weld End Connections
- Fully Machined from Certified 316 Stainless Steel Bar Stock
- Precision CNC Machined
- Sizes Available from 3/4 to 4"

NON RETURN VALVE SERVICE KIT



Features & Specifications

- Economical & Simple
- All Sealing Parts Included
- Supplied with EPDM O-rings
- Viton Kits also Available
- Readily Available
- Easy to Install

STAINLESS STEEL HOSETAILS — SSH SERIES



Features & Specifications

- Ideal for Safe Hygienic Weld-in Situations
- Swaged Ridges for Fitting a Hose
- RJT & Triclover Adapters Hose Tails Available
- Manufactured from Certified 316 Stainless Steel Tubes

THREE WAY PLUG VALVE SERVICE KIT



Features & Specifications

- Readily Available
- Easy to Install
- Precision CNC Machined
- Service Instructions Supplied and Available Online

HYDRAULIC CHECK VALVES — MAX PRESSURE: 276 BAR / 4000 PSI — CV200 SERIES



Features & Specifications

- High Flow Design
- Easily Serviced
- Service Kits Readily Available
- BSP Female/Female Thread Connections. Other Threads also Available
- Precision CNC Machined
- Manufactured from Certified Stainless Steel Bar Stock
- Sizes Available from 3/8" to 1"

HYDRAULIC CHECK VALVES SERVICE KIT



Features & Specifications

- Easy to Install
- Poppet Manufactured from Certified 316 Stainless Steel Bar Stock
- Precision CNC Machined
- Service Instructions Supplied & Available Online

HYDRAULIC QUICK RELEASE COUPLER — MAX PRESSURE: 205 BAR / 3600 PSI — QRC300 SERIES



Features & Specifications

- High Flow Design
- BSP Female/Female Thread Connections. Other Threads also Available
- Easily Serviced
- Designed for Hydraulic oil, High Pressure Water, Chemicals, Sanitary and Food Applications
- Manufactured from 316 Stainless Steel Bar Stock
- Heavy Duty
- Sizes Available from 3/8" to 2"

HYDRAULIC QUICK RELEASE COUPLER SERVICE KITS



Features & Specifications

- Readily Available
- Easy to Install
- Service Instructions Supplied and Available Online

BALL VALVES - BSPP SS316



Features & Specifications

- Full Flow - Anti-Blowout Stem Design
- Two Piece Valve
- BSPP Female/Female Thread Connections. Other Threads Available
- Manufactured from Certified 316 Stainless Steel Bar Stock
- ISO 15500, API STD 607 & PED 97/23/EC Approved
- Precision CNC Machined
- Easily Serviceable
- Service Kits Readily Available
- Extended Cycle Testing to Ensure Longevity
- Delrin Seats (Peek Available)
- Nitrile O-rings (Viton Available)

BRASS SWIVELS — BSU SERIES



Features & Specifications

- Suitable in Hose Reels, Fuel Nozzles, Pump to Hose Connections, Hot Bitumen Lines, etc.
- Standard Swivels Come with Viton Seals
- Working Pressure: 14BAR / 200PSI
- Precision CNC Machined
- Designed for Low Pressure Applications
- Sizes Available from 3/4" to 3"

ACCESSORIES & TOOLS

REVERSING SEGMENT



Features & Specifications

- Simple & Cost Effective Solution
- Changes Handle Operation Direction
- Laser Cut from Certified 304 Stainless Steel

LOCK OUT HANDLE OPTION



Features & Specifications

- Fully Secure On/Off Locked Handle Position
- Stainless Steel Laser Cut Segment
- Easily Retrofitted onto Standard Valves
- Ideal for Isolation Functions

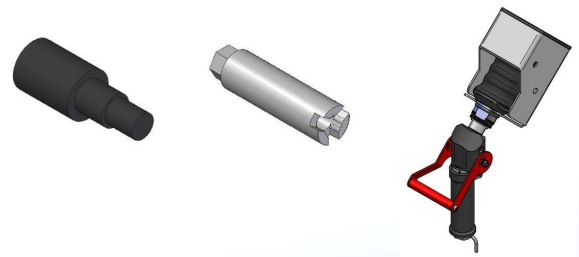
CUSTOMIZED HANDLE SOLUTIONS



Features & Specifications

- Customized Handle Solutions to Suit Your Requirements
- Laser cut from Stainless Steel
- Powder Coated
- Printed Logo Design

OTHERS



Features & Specifications

- Ball Valve Assembly Tool
- Quick Release Coupler Poppet Assembly Tool
- Fill Valve Holders

CONTACT US FOR MORE INFORMATION AND DETAILS

e2e – Engineer to Engineer

e2e



At Oasis Engineering we are passionate about SETTING THE STANDARD when it comes to our products & processes. As well as our standard range of products we can also customise or manufacture to your requirements. All our sales team are engineers so please talk to us e2e (Engineer 2 Engineer) to discuss your very own requirements.

Here are examples of some of the things that we have been commissioned to undertake.

CUSTOM VALVE EXTENSION

Specification Details

Testament to the “freakishly good” design of the Oasis Ball valve, the Oasis valve is being retrofitted to many installations. Maintaining the proven long cycle life of the Oasis Ball valve, the custom valve extension is used when a non-Oasis valve being replaced is longer in length than the Oasis standard design.

We can custom manufacture a cap that will meet the length dimensions for your needs. Talk to us e2e (Engineer to Engineer) so that we can craft a solution that meets your needs.



TANK HEAD VALVE

Specification Details

Custom designed to meet your tank connection, porting & valve requirements. The Oasis Tank Head Valve is designed for use in trailers and storage cascades. Utilising the proven HIGH FLOW and LOWEST LIFE COST design features we can customise a solution that meets your needs exactly.

Materials, coupling systems, port configurations and flow rates are all considered in the design brief. Oasis will work with you to define these criteria. Once defined, Oasis design potential solutions, working with you to select the best path. Oasis then prototypes & tests the selected concept. Once proven in your application, full production begins. All of this happens under ISO9001:2008 approved systems.



VENT VALVE



Specification Details

Oasis vent valves are perfect for multi port gas distribution and venting situations. Using Oasis sandwich valve technology the valve is compact and very easy to service. There are many port options available so contact an Oasis salesman today to discuss your requirements.

BALL VALVE PRIORITY PANEL MANIFOLD



Specification Details

Oasis has been creating custom solutions for some of the biggest names in the game. Providing the complete plug and play unit, Oasis can customize a manifold system that will integrate:

1. Sandwich Ball Valves
2. Check Valves
3. Coupling Systems

We have the capacity to design, prototype, test and manufacture a custom solution using either the manifold valve or the sandwich valve technology, delivering to you the complete package with total ease of service.

BALL VALVE DISPENSER MANIFOLD



Specification Details

Oasis dispenser manifolds are designed with high flow rates in mind. Using Oasis sandwich valve and integrated check valve technology, we have created a compact high flow dispenser manifold that performs at the top of its game. When the time comes maintenance is easy with the extraction of the sandwich valve only requiring the removal of 4 bolts.

