

GL-5

CHARGING RATE : - 3 CFM

FILLING TIME : - 1.5 to 2.4 gge/per hr, depending on inlet gas pressure

WORKING PRESSURE : 3600 Psi

DRIVEN BY : Three-phase or single-phase electric motor

POWER : Single-phase or Three-phase - 230 V - 50/60 Hz, 16,7 Ampere

DIMENSIONS : height 41.3", width 27.5" - depth 26.3"

DRY WEIGHT : 352 lbs

NOISE : 65 dB (at 3 ft distance)

N° STAGES AND CYLINDERS : 3

LUBRICANT : CE 750 Synthetic

FRAME : Powder coated steel

OIL/MOISTURE SEPARATORS: 1

FILTRATION: 1 Maxifilter with molecular sieve

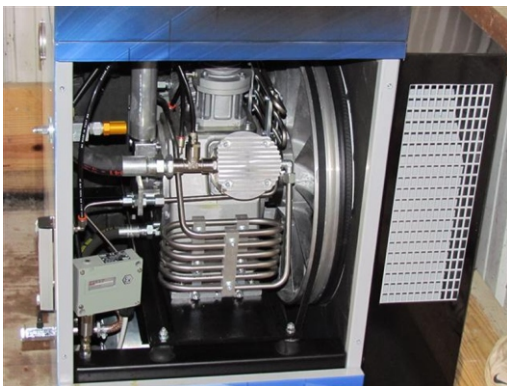
SAFETY PRESSURE SWITCH : 1 last stage

INTERSTAGE COOLERS AND AFTER COOLERS :
Stainless steel

MIN/MAX SUCTION PRESSURE : 4 oz. to 3 lb psi

DELIVERY TEMPERATURE : Ambient temp. + 41° F/
FORCED AIR COOLED

COMPRESSOR RPM : 1240



Distributed by



TULSA GAS TECHNOLOGIES

4809 South 101 East Avenue • Tulsa, Oklahoma 74146
(918) 665-2641 • FAX: (918) 665-2657 • www.tulsagastech.com

MADE IN
THE U.S.A.



GL-10

CHARGING RATE : - 6 CFM

FILLING TIME: - 3.8 to 4.2 gge/per hr, depending on inlet gas pressure

WORKING PRESSURE : 3800 Psi

DRIVEN BY : Three-phase electric motor

POWER : Three-phase - 230 V - 50/60 Hz

DIMENSIONS : height 41.3", width 27.5" - depth 26.3"

DRY WEIGHT : 396 lbs

NOISE : 70 dB (at 3 ft distance)

N° STAGES AND CYLINDERS : 3

LUBRICANT : CE 750 Synthetic

FRAME : Powder coated steel

OIL/MOISTURE SEPARATORS: 1

FILTRATION: 1 Maxifilter with molecular sieve

SAFETY PRESSURE SWITCH : 1 last stage

INTERSTAGE COOLERS AND AFTER COOLERS : Stainless steel

MIN/MAX SUCTION PRESSURE : 3 oz. to 3 lb psi

DELIVERY TEMPERATURE : Ambient temp. + 41° F/
FORCED AIR COOLED

COMPRESSOR RPM : 1300